



EECS Electricity
Domain Protocol

for

Portugal

Prepared by REN – Rede Eléctrica Nacional, S.A

Based on EECS Rules Release 7 v14

Release 2

March 2022



EECS Domain Protocol

Document Control

Version	Date	Originator	Reviewers
1	2 nd April 2020	REN	
2	18 th April 2020	AIB	Emma Kelly, Pamela Boeri
3	25 th April 2020	REN	
4	13 th May 2020	AIB	Emma Kelly, Pamela Boeri
5	15 th May 2020	REN	
6	23 rd May 2020	AIB	Emma Kelly
7	25 th May 2020	REN	
8	15 th June 2020	REN	
9	9 th March 2022	REN	
10	13 th April 2022	REN	
FINAL	15 th October 2022	AIB	Following ESG approval on 22/09/22

Version	Approver	Date	Responsibility
1			

Change History

Version	Description
1	First Version of Domain Protocol
2	Reviewed by AIB
3	Amended in accordance with reviewer comments
4	Reviewed by AIB
5	Amended in accordance with reviewer comments
6	Reviewed by AIB
7	Amended in accordance with reviewer comments
8	Amended in accordance with reviewer comments
9	Amended by REN
10	Amended by REN in accordance with new template
FINAL	Following ESG approval on 22/09/22



EECS Domain Protocol

Contents

A	Introduction	5
B	General	5
B.1	Scope	5
B.2	Status and Interpretation	6
B.3	Roles and Responsibilities	6
C	Overview of National Legal and Regulatory Framework	8
C.1	The EECS Framework	8
C.2	National Electricity Source Disclosure	9
C.3	National Public Support Schemes.....	11
C.4	EECS Product Rules	12
C.5	Local Deviations from the EECS Rules	12
D	Registration.....	13
D.1	Registration of an Account Holder	13
D.2	Resignation of an Account Holder	14
D.3	Registration of a Production Device.....	15
D.4	De-Registration of a Production Device.....	18
D.5	Maintenance of Production Device Registration Data	18
D.6	Audit of Registered Production Devices	20
D.7	Registration Error/Exception Handling.....	20
E	Certificate Systems Administration	21
E.1	Issuing EECS Certificates	21
E.2	Processes.....	21
E.3	Measurement	23
E.4	Energy Storage (Including Pumped Storage)	24
E.5	Combustion Fuels (e.g. Biomass).....	25
E.6	Format.....	26
E.7	Transferring EECS Certificates	26
E.8	Administration of Malfunctions, Corrections and Errors.....	28
E.9	End of Life of EECS Certificates – Cancellation	29
E.10	End of Life of EECS Certificates – Expiry	30



EECS Domain Protocol

E.11 End of Life of EECS Certificates – Withdrawal	30
F Issuer's Agents	30
F.1 Production Auditor.....	30
F.2 Production Registrar	30
G Activity Reporting	31
G.1 Public Reports	31
G.2 Record Retention	31
G.3 Orderly Market Reporting.....	32
H Association of Issuing Bodies	32
H.1 Membership.....	32
H.2 Complaints to the AIB	33
I Change Control.....	34
I.1 Complaints to REN.....	34
I.2 Disputes	34
I.3 Change Requests	34
Annex 1: Contacts List	36
Annex 2: Account Application/Amendment Form	37
Annex 3: Device Registration Form.....	39
Annex 4: Production/Consumption Declaration	43
Annex 5: EECS Electricity Cancellation Statement	44



A Introduction

This Domain Protocol describes how the EECS Standard has been implemented in Portugal Mainland and it indicates where that system deviates from that standard. The EECS framework including the Domain Protocol aims to ensure robustness and transparency for all parties involved.

A Domain Protocol promotes quality and clarity, as it:

- explains local rules;
- provides clear information to all stakeholders (consumers, market parties, other members, government, the EU Commission etc.);
- facilitates assessment of compliance and permissible deviation from the EECS Rules;
- facilitates audit; and
- translates local rules into a single format and language, supporting each of the above.

Important contact information is provided in Annex 1.

B General

B.1 Scope

B.1.1. This Domain Protocol sets out the procedures, rights and obligations, which apply to the Domain of Portugal and relate to the EECS Electricity Scheme as defined in the EECS Rules.

B.1.2. Production Device qualification for this Domain will be determined by connection to the electricity system of Portugal such that, in electrical terms, the Production Device is effectively located in Portugal Mainland. The Autonomous Regions of Portugal, namely the Autonomous Region of Madeira and the Autonomous Region of Azores, are excluded from this Domain Protocol.

B.1.3. Rede Eléctrica Nacional, S.A. (hereinafter «REN») is the single electricity transmission system operator (TSO) in Portugal Mainland and the only entity authorised to issue EECS Certificates relating to the following EECS Products:

- EECS GO - Guarantees of Origin – Hereinafter «GOs»

B.1.4. REN was appointed as the single Authorised Issuing Body and Registry Operator for Portugal, «**EEGO- Entidade Emissora de Garantias de Origem**», by Law nº 71/2018 of 31 December 2018, amending Decree-Law nº 23/2010 of 25 March 2010 and Decree-Law nº 141/2010 of 31 December 2010.

B.2 Status and Interpretation

- B.2.1. This document refers to EECS Rules [7 version v14].
- B.2.2. The EECS Rules are subsidiary and supplementary to Portuguese legislation and rules.
- B.2.3. The EECS Rules and its subsidiary documents are implemented in Portugal in the manner described in this Domain Protocol. Any deviations from the provisions of the EECS Rules that may have material effect are set out in section C.5 of this document.
- B.2.4. The capitalised terms used in this Domain Protocol shall have the meanings ascribed to them in the EECS Rules except as stated in section C.5 of this document.
- B.2.5. This Domain Protocol is made contractually binding between an EECS Participant and REN by agreement in the form of the Standard Terms and Conditions.
- B.2.6. In the event of a dispute, the approved English version of this Domain Protocol will take precedence over a local language version.

B.3 Roles and Responsibilities

- B.3.1. The main roles and responsibilities within the domain Portugal are the following:

The **Authorised Issuing Body** for GOs in Portugal is REN. Its role is to administer the EECS Registration Database and its interface with the EECS Transfer System.

- B.3.1.1. The **Competent Authority** for GOs in Portugal is REN. Its role is defined by legislation to be responsible for the operation of GOs in Portugal.

The **Authorised Measurement Bodies** established under national regulation are responsible for the collection and validation of measured volumes of energy used in national financial settlement processes. There are two Authorised Measurement Bodies in Portugal:

- a) Transmission System Operator – REN;
- b) Distribution System Operator - EDP Distribuição - Energia, S.A..

- B.3.1.2. **Production Registrar** – REN is the entity responsible for assessing applications to register Production Devices.

Production Auditor - The role of Production Auditor in Portugal is performed by REN. REN is responsible for auditing and inspecting CHP and renewable energy production facilities, in order to ensure the fulfillment of the conditions



EECS Domain Protocol

of registration and the accuracy of production data. Production Audits may be conducted by outsourced agents hired and appointed by REN, in accordance with the Portuguese rules and legal framework.

B.3.1.3. **EECS Participant (Registrant)** is an Account Holder in the EECS Registration Database. They may be owners or Registrants of production devices, traders, brokers and suppliers.

B.3.2. The Portuguese legislation also defines additional roles under the responsibility of the following entities:

ENSE – Entidade Nacional para o Setor Energético E.P.E (Entity for the Energy Sector) is a public corporation with the role of supervising and monitoring the energy sector holding special responsibility in evaluating the causes of accidents in the energy sector and monitoring the execution and ensuring compliance with licensing obligations in the energy sector by concession holders.

ERSE-Entidade Reguladora dos Serviços Energéticos, is the Portuguese National Regulatory Authority (NRA). ERSE is responsible for regulating the energy sector. In relation to GOs, ERSE is responsible for supervising REN's activity and approving EEGO's annual accounts, budget, tariffs and procedures. ERSE is also the entity responsible for the disclosure and labelling procedures, including supervising the energy suppliers compliance with disclosure and labelling rules and calculating the residual mix.

DGEG-Direcção Geral de Energia e Geologia (General Directorate of Energy and Geology) is the Portuguese Public Administration body whose mission is to contribute to the design, promotion, implementation and evaluation of policies related to energy. In relation to GOs, among other things, DGEG is responsible for granting operating licences to production facilities, granting external auditors the necessary qualification and selling the GOs from supported Production Devices.

OMIP – Pólo Português, S.G.M.R. (OMIP) is the entity responsible for the operation of the Auctions of GOs from supported generation.

B.3.3. Further information and contact details for the principal roles and Issuing Body agents are given in Annex 1.

B.3.4. The EECS Registration Database operated by REN can be accessed via the website https://www.ren.pt/en-GB/o_que_fazemos/eego.

B.3.5. Within the domain of Portugal, there are no Non-Government certificates or Independent Criteria Schemes.

B.4 Summary: Issuance scope

B.4.1. In summary, REN has been authorised to issue the following types of energy certificates:

Issuing Body issues certificates for:		Electricity		
		ProductType	Source	Technology (= High-Efficiency Cogeneration)
EECS GO	Energy source	Renewable	X	X
		Fossil	X	X

C Overview of National Legal and Regulatory Framework

C.1 The EECS Framework

C.1.1. For this Domain, the relevant local enabling legislation is the following:

[Decree-Law n° 23/2010 of 25 March 2010](#), amended by [Law n° 19/2010 of 23 August 2010](#), and by [Decree-Law n° 68-A/2015 of 30 April 2015](#) amended by [Rectification Statement n° 30-A/2015 of 26 June 2015](#) - establishing the terms and conditions of the cogeneration activity.

[Decree-Law n° 141/2010 of 31 December 2010](#), amended by [Decree-Law n° 39/2013, of 18 March 2013](#), by [Decree-Law n° 68-A/2015 of 30 April 2015](#) by [Decree-Law n° 152-C/2017, of 11 December 2017](#) and by [Decree-Law n° 60/2020 of 17 August 2020](#), establishing the mechanism of guarantees of origin for electricity generation, cooling or heating produced from renewable sources of energy.

[Decree-Law n° 60/2020 of 17 August 2020](#), establishing the mechanism of guarantees of origin for gases from renewable sources and low-carbon gases, updating the renewable energy targets.

[Legislative Order n° 6560-B/2021, of 5 July 2021](#), establishing the auction rules for selling the guarantees of origin from supported renewable sources.

[Decree-Law n° 15/2022 of 14 January 2022](#), establishing the organization and functioning of the National Electricity System, transposing Directive (EU) 2019/944 and Directive (EU) 2018/2001, on the promotion of the use of energy from renewable sources.

C.1.2. REN has been properly appointed as an Authorised Issuing Body for GOs under the Article n° 238 of [Law n° 71/2018 of 31 December 2018](#).

C.1.3. In compliance with the Portuguese legislation, rules and procedures have been published in a single document, approved by the governmental body Directorate General for Energy and Geology (DGEG) after opinion of ENSE, named «[Manual de Procedimentos da EEGO](#)».

C.2 National Electricity Source Disclosure

C.2.1. Applicable Legislation and regulation:

The [Directive nº16/2018 of 13 December 2018](#), published by the Portuguese National Regulatory Authority (NRA), ERSE - Energy Services Regulatory Authority, establishes the terms and conditions of electricity labelling and the rules for the disclosure of information on electricity sources to consumers.

The Portuguese regulatory framework on disclosure is also based on the following legislation:

- a) Commercial Relations Code for the Electricity Sector ([RRC SE - Regulamento de Relações Comerciais do Sector Elétrico](#));
- b) [Law nº 51/2008 of 27 of August 2008](#) - Establishes the disclosure obligation regarding the primary energy source used for electricity generation.

C.2.2. Summary of the disclosure methodology:

All energy suppliers are obliged to inform end consumers about the energy source and CO₂ emissions of the electricity they supply. This information is published, and updated on a quarterly basis, on the electricity bills and the websites of energy suppliers. In addition, an annual brochure is also sent to consumers. Information should be disclosed according to the colors, categories and types of diagrams established in Article 16.º of ERSE Directive nº16/2018.

Pursuant to Article 6(2) of [Directive nº16/2018 of 13 December 2018](#), for disclosure purposes, only GOs from renewable sources and CHP GOs can be used. The [Directive nº16/2018 of 13 December 2018](#) provides a Contract Based Tracking (CBT) mechanism for disclosure purposes, which can only be used for the electricity not subject to GOs.

According to Article 5.º of ERSE Directive nº16/2018, a residual production mix called «[Mix Base do Sistema](#)» is first calculated by the ERSE, each quarter, based on the data from the last 4 preceding quarters (production adjusted by import balance - GOs issued in Portugal - CBTs when applicable). In accordance with Article 12 (1), this information is published by the ERSE on its website (<https://www.erse.pt/eletricidade/rotulagem/rotulagem>) up to the 15th day of the 2nd month of the quarter, with respect to the previous quarter.

A particular energy supplier may have multiple commercial offers with different energy sources (a different mix for each commercial offer). Based on the mix provided by the ERSE and their cancelled GOs (issued in Portugal and imported) and CBTs (when applicable), energy suppliers shall calculate their specific mixes in accordance with Article 6.º and Article 7.º of ERSE Directive nº16/2018. Energy suppliers shall update the information they provide quarterly to end consumers by the 15th day of the following 3rd month, with respect to the previous quarter. All suppliers mixes including the specific mixes of all commercial offers are publicly available on a labeling simulator tool called «Simulador» provided by ERSE on its website: <https://simulador.rotulagem.erse.pt>

After starting the simulation (click «start»), you can choose the billing period (1, 2 or 12 months), the consumption profile (nº of people in the household or the monthly consumption indicated on your invoice), the operation region (Mainland or Islands) and then the supplier and the product (commercial offer). You can also compare product with the residual mix or the greenest offer on the market.

The methodology for the default environmental impact regarding CO₂ emissions is based on emission values per energy called «[Factores de Emissão](#)», published by ERSE on its webpage and updated annually: <https://www.erse.pt/eletricidade/rotulagem/rotulagem>

Electricity invoices should include the following information updated on a quarterly basis:

- c) The mix of the offer, or in the absence of a differentiation in mix by offer, the supplier's mix;
- d) Total CO₂ emissions associated with the consumption;
- e) Links to internet pages on supplier and ERSE labelling;
- f) An additional explanation in case of invoice correction resulting in negative values;
- g) If the contract between the supplier and the consumer is "set amount" type, the information on CO₂ emissions shall be displayed on the invoice issued at the end of the period corresponding to total consumption during this period.

Electricity suppliers should also publish on their websites the following information (updated on a quarterly basis):

- a) Supplier mix in the last quarter;
- b) Evolution of the supplier's mix for the four previous quarters;

- c) The mix in each offer in the last quarter, except when the offers do not have at least one quarter of historic data to report;
- d) Figures for the specific CO₂ emissions of the supplier's offers in the last year, if applicable;
- e) Figures for the supplier's specific CO₂ emissions in the last year;
- f) Additional information on environmental impacts including:
 - i. General information in accordance with the format provided by ERSE;
 - ii. Intra-organizational measures implemented by the supplier to reduce environmental impacts which are not reflected in previously published figures on emissions.

Expired certificates are not used in the residual mix calculation.

ERSE is responsible for the supervision of disclosure information, i.e. in Portugal ERSE is also the competent national authority for disclosure: infortulagem@erse.pt

C.3 National Public Support Schemes

C.3.1. In Portugal, the main support scheme in place is generation-based Feed-in Tariff (FIT).

Based on energy policies, tariffs are frequently adjusted and are differentiated by multiple factors, including the technology, primary energy sources, size, year of licensing and others. Further information can be found on the DGEG website: <http://www.dgeg.gov.pt>.

C.3.2. In accordance with the Portuguese legislation, GOs from Production Devices with support are not granted to producers. In order for producers to benefit from feed-in tariffs, they must first register their Production Devices and request the issuance of GOs for the energy generated in a specific account. GOs from supported energy are handled as follows:

- a) Cogeneration Products (CHP), such as High-Efficiency Cogeneration GOs, shall be issued and transferred to a specific account held by the last resort supplier (EDPSU - EDP Serviço Universal, S.A). The payment of the feed-in tariff to the producer shall depend on the confirmation of the issuance of the GOs. Non-renewable CHP GOs are not being sold on the market and are therefore cancelled after 12 months. Renewable CHP GOs are transferred to DGEG account to be auctioned.



EECS Domain Protocol

- b) Electricity GOs from renewable energy sources shall be issued and transfer to a specific account held by DGEG. The payment of the feed-in tariff to the producer shall depend on the confirmation of delivery of all GOs to DGEG.
- c) According to the Portuguese law, DGEG can sell these GOs on the market, to other internal or external agents, and the income of such activity should be used to reduce the over-costs with the feed-in tariffs, in accordance with the terms provided in the Tariff Regulations. These GOs are being sold through a competitive auction mechanism whose rules are defined by the [Legislative Order n° 6560-B/2021, of 5 July 2021](#).
- d) Participation in the auctions is open to all entities, both domestic and foreign, requiring previous registration with OMIP, which is the entity responsible for the execution of the auction, and with REN, which ensures the physical settlement of the process. The auctions are held periodically, typically on a monthly basis, on a dedicated platform made available by OMIP S.A., with the quantity of GOs to be auctioned in each auction being defined by DGEG. Additional relevant information:
 - i. REN Registration – section D.1;
 - ii. Registering for the auctions – you can consult the [OMIP website](#) and contact OMIP through the email address leiloes-GO@omip.pt;
 - iii. Further information about the auction calendar, volumes, and results can be consulted on the [DGEG](#) and [OMIP](#) websites.
- e) After being sold on the market, these GOs have no other restriction, and therefore this support scheme does not affect electricity disclosure procedures.

C.4 EECS Product Rules

C.4.1. The EECS Product Rules as applied in Portugal are set out within sections D and E of this document.

C.4.2. In accordance to EU Directives and Portuguese regulatory framework, GOs are issued for the purpose of disclosure, proving to a final customer that a given share or quantity of energy was produced from a certain source and technology.

C.5 Local Deviations from the EECS Rules

C.5.1. Contrary to EECS Rule C2.2.3, the registration of a Production Device as qualifying for the EECS Schemes in the EECS Registration Database do not expire.

C.5.2. Renewable energy subject to GO issuance produced in municipal waste incineration plants is a percentage of the total electricity injected into the Public Service Electricity

Grid. The percentage is calculated each year, until the end of March, based on waste audits carried out by the competent authorities. The value is provided by DGE.

C.5.3. In non-CHP thermal Production Devices that use multiple fuels, the official Annual Declarations submitted to DGE and the environmental authorities until the end of March in compliance with the Portuguese Legislation, can also be used to determine the share of the energy produced by each fuel.

D Registration

D.1 Registration of an Account Holder

D.1.1. The following entities may be an Account Holder in the REN System (hereinafter «[EEGO System](#)»):

- a) Representative Agents;
- b) Cogenerators;
- c) Energy traders;
- d) Last resort traders;
- e) GO traders;
- f) Electricity end-consumers;
- g) DGE - Direção Geral de Energia e Geologia;
- h) Electricity generators from renewable energy sources;
- i) Energy producers for heating and cooling from renewable energy sources.

D.1.2. A Registration request is completed electronically via the EEGO System, (<https://eego.ren.pt/en>), through a [registration form](#) containing the information required by the [Manual de Procedimentos da EEGO](#), such as:

- a) Commercial Registry Certificate or the respective access code;
- b) Identification of the person responsible for the applicant with respect to EEGO (Annex III of the [Manual de Procedimentos da EEGO](#));
- c) Copies of the identification documents or attestations of signatures by a lawyer or notary certifying that the signatories is duly mandated for this purpose;
- d) Legal qualification proving the ability to exercise for the purpose of the subscriber of the request, as well as, subsequently, of the subscriber(s) of the Contract;
- e) Identification of at least one user authorized to act on the EEGO System on behalf of the Participant.



EECS Domain Protocol

- f) Users may have different access permissions. All users must be correctly identified, indicating all the information requested, including personal data and job title;
- g) Information required for settlement and billing purposes.

D.1.3. If deemed necessary, additional information can be requested from the applicant. The response must be provided within 30 (thirty) days.

D.1.4. All Accounts are identified in the EEGO System by a univocal code.

D.1.5. The list of the registered Participants, which can be identified by their code, is available to Account Holders through the EEGO System and publicly on the website: https://www.ren.pt/pt-PT/o_que_fazemos/eeego/documentacao_e_estatisticas.

D.1.6. REN will send to each registered user, within 5 (five) business days after the registration request date, the individual credentials required to access the EEGO System.

D.1.7. The decision regarding the application will be communicated by email to the applicant within five (5) business days of receipt of the application. The decision may take the following forms:

- a) Approval;
- b) Rejection - In accordance with the terms of the [Manual de Procedimentos da EEGO](#);
- c) Pending the presentation of clarifications or missing elements.

D.1.8. After the expiry of the period provided for in point D.1.3, without the applicant having resolved all non-conformities of the application, the suspension of the application shall be determined. REN will notify the applicant again, giving a further 15 (fifteen) days to reply.

D.1.9. After the deadline set in D.1.8, the registration will be cancelled.

D.1.10. Upon approval of the application, REN shall send to the applicant, within 5 (five) business days, REN Standard Terms & Conditions.

D.1.11. The application process will be terminated after REN receives REN Standard Terms & Conditions duly signed by the applicant. REN will notify the applicant in writing of the order closure.

D.1.12. Service tariffs can be found on https://www.ren.pt/en-GB/o_que_fazemos/eeego/adesao

D.2 Resignation of an Account Holder

D.2.1. The Account Holder must notify REN of an intent to close their account in writing, in accordance with the terms of the [Manual de Procedimentos da EEGO](#).



EECS Domain Protocol

- D.2.2. Termination of the Agreement will result in the exclusion of all Production Devices from the EEGO System registered by the respective Account Holder.
- D.2.3. The Account must not contain any GOs at the time of closure. Any GOs in the account must be transferred before the notice to close is sent.
- D.2.4. If the Account Holder does not sell or cancel them, REN cancels the GOs and closes the account. In this case of resignation without clearing the account, the GOs cancelled by REN are marked as “annuled” by the EEGO System, becoming disabled for any operation, and are not visible for other users nor can also be used for disclosure purposes. This information is reported afterwards to ERSE.
- D.2.5. When closing an Account, the Account Holder is responsible for paying any outstanding payments to REN. REN will not refund any fees already paid by the Account Holder.
- D.2.6. After closing an account, REN will maintain the correspondent operating records for a period of 10 (ten) years. When an Account is closed, it is no longer active and any access to it is denied. REN will amend the EECS Registration database accordingly.
- D.2.7. Personal data will be processed for the purpose of administrative management of the Contract, based on the following grounds: performance of the Contract and procedures within the scope of REN’s activity, compliance with legal obligations and legitimate interests of REN and response to contacts and complaints, with no fundamental rights of data subjects.
- D.2.8. The personal data processed will be retained for the time required by REN to comply with legal and regulatory obligations and to exercise rights.

D.3 Registration of a Production Device

- D.3.1. The enrolment of Production Devices is done electronically through the [EEGO System](#). The owner, or its appointed agent, registers the Production Device directly in the registry system.
- D.3.2. Production Devices may be registered in the EEGO System when complying with the following requirements:
 - a) Production Devices with an operating license or equivalent document issued by DGEG for the production of electricity from renewable energy sources;
 - b) Production Devices with a license or prior notification granted by DGEG for the production of heating and cooling energy from renewable energy sources;
 - c) Production Devices with an operating license granted by DGEG for the simultaneous generation, in an integrated process, of thermal energy and of

electrical and / or mechanical energy and where the production of thermal energy meets an economically justifiable demand for heat or cold;

d) Production Devices included in the Electricity System of the Domain.

D.3.3. The following Production Devices may not be registered in the EEGO System:

- a) Production Devices without an operating license or equivalent document assigned by DGEG;
- b) Production Devices for the production of thermal energy from renewable energy sources with an installed capacity below 5 MW;
- c) Mobile or itinerant installations for the production of electric energy, as well as reserve or rescue electric energy production units associated with Installations, in accordance with no. 3 of article 2 of Decree-Law no. 153/2014, October 20th.

D.3.4. Production Devices can only be registered if they meet the qualification criteria of EECS.

D.3.5. The procedure for registering a Production Device is carried out in the following sequential phases:

- a) Registration request via EEGO System;
- b) If required, an Initial Audit is performed;
- c) Decision on the application for registration.

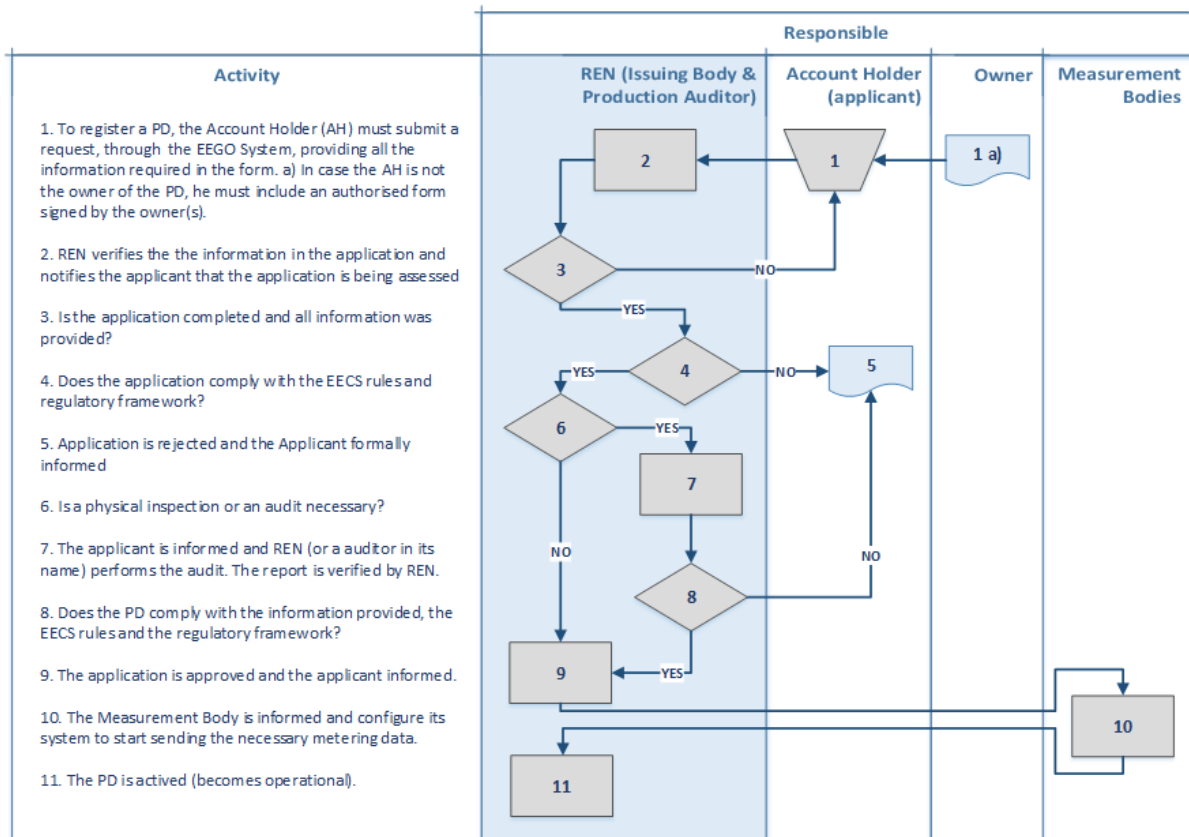
D.3.6. Application for the Production Device registration is made electronically via a standardized form in the EEGO System.

D.3.7. When a Representative Agent is involved, a power of attorney is issued and duly signed by the legal owner of the Production Device granting the powers of representation with respect to EEGO;

D.3.8. The application must include all the necessary elements, such as:

- a) Operating license or equivalent document issued by DGEG;
- b) Detailed technical descriptions of the Production Device and its equipment;
- c) For Production Devices connected to the Public Service Electricity Grid at VHV, HV or MV or when requested by EEGO, the single-line diagram, including the identification and location of the following equipment:
 - i. Electrical power metering equipment associated with the production plant, more specifically, equipment associated with the production of electricity, fuels consumption and the auxiliary services consumption, as stated in section E.3;

- ii. Electrical power metering equipment relating to electrical power supplied to a customer or customers directly connected to the Production Device at the same Public Service Electricity Grid connection point, and to electrical power supplied or consumed through Public Service Electricity Grid (PSEG);
 - iii. Power transformers;
 - iv. Connection point to the PSEG.
- d) Other elements required by REN in accordance with [Manual de Procedimentos da EEGO](#).
- D.3.9. The decision on the application for registration of the Production Device shall be communicated to the applicant within 10 (ten) business days of receipt of the application, and may take one of three forms:
- i. Approval;
 - ii. Refusal;
 - iii. Pending presentation of clarifications or missing elements.
- D.3.10. After having received the application for Production Device, REN checks all required data regarding the Production Device. In case of missing or ambiguous data, a request to complete or amend the application will be sent to the applicant. In case of doubt on the credibility of data, REN can perform a site visit at the Production Device or request additional information from the competent entities.
- D.3.11. If deemed necessary as part of the verification process, within 10 (ten) business days after receipt of all application documentation, REN will schedule an initial audit, informing the Registrant of the date and the Auditor selected for that purpose. In case of CHP Production Devices, an initial audit and at least one audit every 3 years is legally required.
- D.3.12. A request is sent to the respective Authorised Measurement Body in order to make the necessary settings so that the EEGO System starts receiving the respective measurement data. When all required data is provided and verified, the Production Device is registered in the EEGO System.
- D.3.13. When registration is accepted, the Production Device is identified by a unique GS1/GSRN code (18 digit).
- D.3.14. Process:



D.4 De-Registration of a Production Device

D.4.1. Registrants may request to deregister their Production Devices through a standardized form in the EEGO System. REN will thereby proceed with deregistration of the Production Device from the registry database, as of the effective date on the request or as soon as is practically

D.4.2. After a request for de-registration is verified, accepted and concluded, the Participant receives a notification by email. Once the Production Device has been deregistered, no more GOs will be issued.

D.4.3. The data related to Production Devices stored in EEGO System will be kept after resignation, in accordance with G.2.

D.4.4. Resigning does not entitle the Registrant to a refund, nor does it release the Registrant from the obligation to pay any outstanding fees.

D.5 Maintenance of Production Device Registration Data

D.5.1. The registration of Production Devices does not expire until REN receives a communication from the Registrant. This provision has been included as a local deviation from the EECS Rules (see para. C.5.1).

- D.5.2. The Account Holder is responsible for keeping the Account Holder information recorded in the EECS registry accurately. This can be done directly through the EEGO System.
- D.5.3. The Account Holder must notify REN, without any delay, of any upcoming changes that will result, or unplanned changes that have resulted, in:
- a) The information recorded in the EEGO System in relation to the Production Device becoming inaccurate;
 - b) Loss of the necessary conditions for the Production Device to continue registered in the EEGO System.
 - c) Transfer or any change in the operating license.
- D.5.4. The changes must be communicated to REN through the EEGO System, without any delay, in advance of when the changes are planned, and immediately after they occur in other cases. Notification must not exceed 10 (ten) working days after occurrence of the change.
- D.5.5. After notification of a change, REN shall analyse the impact of such a change and, within a maximum of 10 (ten) working days from the date the information was received, shall inform, through a notification sent by the EEGO System, the interested parties of its analysis. If deemed necessary as part of the verification process, REN will schedule an inspection.
- D.5.6. Failure to notify REN may lead to suspension of the Production Device in the EEGO System. Suspension will be lifted if and when the Registrant proves to REN that the Production Device meets the required conditions again. GOs will not be issued for suspended Production Devices.
- D.5.7. Failure to notify REN may lead to suspension of the Production Device in the EEGO System. Suspension will be lifted if and when the Registrant proves to REN that the Production Device meets the required conditions again. GOs will not be issued for suspended Production Devices.
- D.5.8. Where REN becomes aware that a Production Device no longer fulfils, or will no longer fulfil, the Qualification Criteria, the registry for that Production Device will be updated accordingly with effect from:
- a) in relation to planned changes notified in advance - the date on which such planned changes are due to come into effect; or
 - b) in relation to changes not announced in advance - as soon as reasonably practicable after becoming aware.

D.6 Audit of Registered Production Devices

- D.6.1. When applicable, the period between inspections of a Production Device should not exceed 3 years.
- D.6.2. All of the Production Devices registered can be subject to on-site audits. Audits are carried out according to procedure, methods and evaluation criteria which are transparent and in conformity with Portuguese legislation and the [Manual de Procedimentos da EEGO](#).
- D.6.3. Account Holders and owners of Production Devices must grant access to REN agents for on-site audits. Refusal to permit access shall be considered a breach of the Standard Terms and Conditions.
- D.6.4. Inspection of Measurement Devices are carried out in accordance with the Portuguese technical and regulatory framework listed in section E.3.5. Inspections verify the position and the accuracy of Measurement Devices used to measure the quantities needed to calculate the amount of EECS Certificates to be Issued.
- D.6.5. If, following an Audit or notification, it is found that the Production Device does not fulfil the conditions to continue to be registered, REN will suspend the Production Device, informing the Account Holder by written notice.

D.7 Registration Error/Exception Handling

- D.7.1. Any errors in GOs resulting from an error in the registered data of a Production Device will be handled in accordance with section E.8.
- D.7.2. An application for the registration of a Production Device for the purposes of GOs will be rejected if:
- a) in relation to that application, the applicant has failed to comply with any requirements of this Domain Protocol, the Standard Terms and Conditions or the [Manual de Procedimentos da EEGO](#);
 - b) the Qualification Criteria are not satisfied in respect to that Production Device;
- D.7.3. If REN detects an error in the information of a Production Device registered in the EEGO System, the following procedure is applied:
- a) If the error is minor and that the Production Device is still eligible for GOs issuance, then REN will notify the Account Holder in order to ensure that the error is rectified by the Account Holder. If expressly authorised by the Account Holder, REN may rectify the error itself. If the Account Holder does not want to correct it, then, after analysing each case, REN may correct or reject the required process;

- b) If the error means that the Production Device ceases to be eligible for GOs issuance, then the Production Device is suspended. For the Production Device to be reactivated, the Account Holder will have to ask for an onsite audit, as described in Section D.6, which will be invoiced to them. If it appears that GOs were inaccurately issued as a result of this error, then the procedure described in E.8 may apply.
- c) When appropriate, REN will report to the AIB in respect of the Section G.3.2.

D.7.4. REN evaluates changes to Production Devices in order to verify the maintenance of the registration requirements and, if they are no longer met, the Production Device owner is notified of the revocation of the qualification. REN keeps records of all the communications with Production Devices owners regarding the registration processes.

D.7.5. All errors will be corrected with the shortest possible delay.

E Certificate Systems Administration

E.1 Issuing EECS Certificates

E.1.1. GOs are issued in accordance with the following:

The Production Device must be located in Portugal Mainland, have an operating license granted by DGEG, be qualified for at least one type of GOs and be registered in the EEGO System.

The Registrant is not suspended or have any outstanding payments to REN.

For a production period of 1 (one) month.

The face value of 1 (one) GO is 1 (one) MWh and each unit of qualifying energy output can only be certified once. Monthly quantities are rounded down to MWh and the remaining quantities are accumulated in the following months until they reach 1 (one) MWh

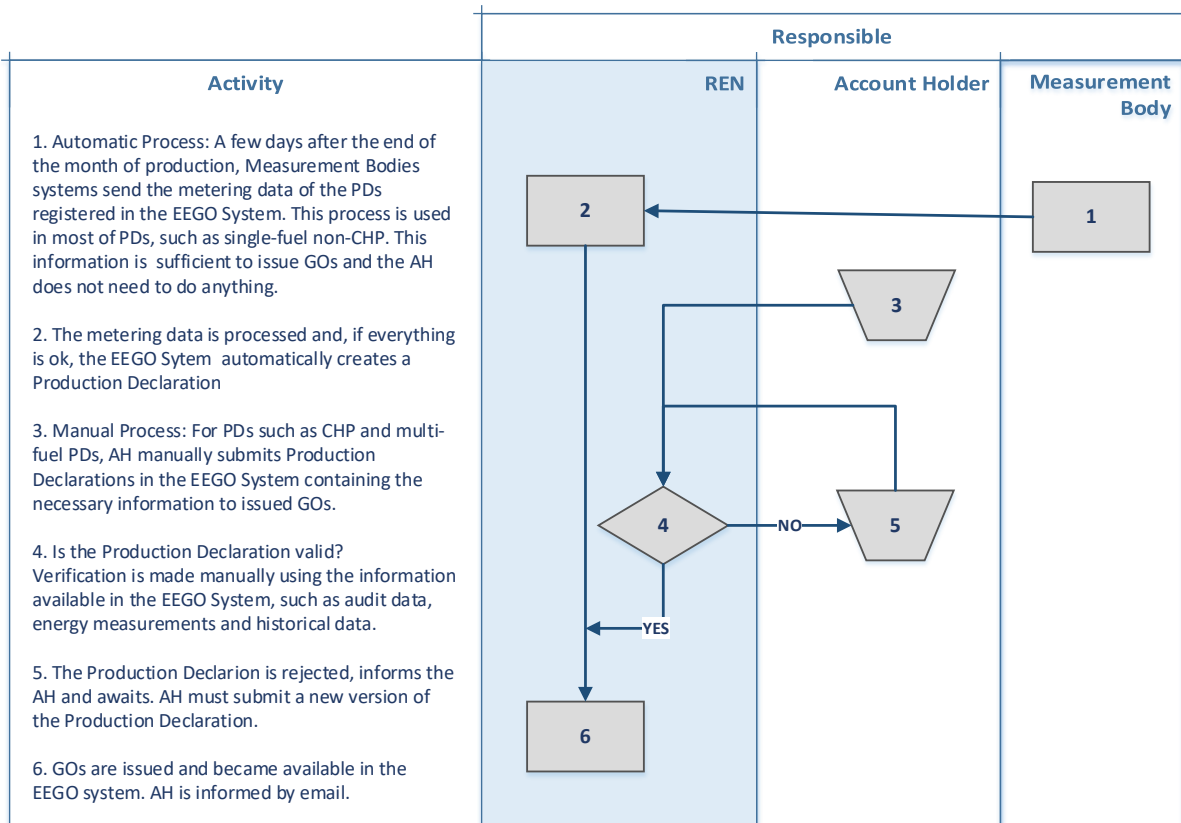
Energy output is metered according to Section E.3.

All relevant historical records are available to Account Holders through the EEGO System.

E.2 Processes

E.2.1. Only persons duly authorized by a Registrant may register Production Devices. Once a Production Device has been registered and activated, the Account Holder to which the Production Device relates can request the issuance of GOs.

- E.2.2. The request for issuing GOs is made in the form of a Production Declaration. The Registrant who owns or represents a Production Device shall electronically submit, through a standardized form in EEGO System (see Annex 4), a Production Declaration, containing all requested data in accordance with the rules and procedures. The requested data depends on the technical characteristics of the Production Devices. Production Declarations correspond to a production period of 1 (one) month and must be submitted monthly.
- E.2.3. Production Declarations are automatically generated when measurements and data collection can be performed automatically. Production Declarations for electricity generated from a single renewable energy source shall be automatically generated. In this case, the EEGO System, upon receiving the measurement values, creates automatically the Production Declarations. This functionality is part of the Production Devices configuration in the system. For multi-fuel Production Devices, the Registrant who owns or represents the Production Device must submit Production Declarations indicating the quantity of each fuel consumed during the period.
- E.2.4. GOs are issued every month to the corresponding Registrant account, upon receipt and verification of a properly completed Production Declaration (manually submitted or automatically generated). This process is performed as soon as possible within a maximum of 5 (five) business days and Account Holders are automatically notified by email.
- E.2.5. In order for Production Devices under a feed-in tariff scheme to receive the tariff, they must first transfer the GOs to specific accounts (see Section C.3.2). If requested by the Registrant, GOs can be issued directly into those accounts.
- E.2.6. The issuing process can be described as follows:



E.3 Measurement

E.3.1. The Measurement Bodies established by national regulation are the TSO and DSO who are responsible for collecting and validating the measurements of the electricity produced by the Production Devices connected into the grid they operate. Measurement Bodies must ensure the compliance of the measuring equipment and procedures with national technical and regulatory framework.

E.3.2. When registering a Production Device, depending on its characteristics, the following electrical measurements may be required:

- a) The electric energy produced by each group of the Production Device;
- b) The electric energy issued and consumed into/from the PSEG;
- c) The electric energy consumed by the auxiliary services;
- d) The electric energy consumed by a customer or customers directly connected to the same PSEG reception point as the Production Device.
- e) The electrical energy consumed in pumping.

- E.3.3. In addition to the metering points identified in the previous point, REN may require other metering points it deems necessary for the correct quantification of energy under the scope of its activity.
- E.3.4. The Registrant of Production Devices are responsible for measuring the remaining quantities required for the issuance of GOs, in accordance with the Manual of Procedures of EEGO, such as fuels consumption and thermal and mechanical energy produced. The Registrant of Production Devices shall provide REN, or the entity delegated by REN, remote access to metering points requested by REN, whenever this exists.
- E.3.5. All measurement procedures and equipment must be compliant with the Portuguese technical and regulatory framework, namely:
- a) Commercial Relations Code for the Electricity Sector (RRC SE - Regulamento de Relações Comerciais do Sector Elétrico);
 - b) [Manual de Procedimentos da EEGO](#);
 - c) DGEG Technical Guide for CHP Production Devices, published on DGEG's website.
 - d) Measurement, Reading and Data Disclosure Guide for Electricity Measurement Systems (Guia de Medição, Leitura e Disponibilização de Dados para os Sistemas de Medição de energia elétrica);
- E.3.6. The required measurement frequency is at least monthly.
- E.3.7. GOs are issued for the measured Nett Electrical Energy that flows into the grid. When a device is out of service, its consumption is not counted.
- E.3.8. In the case of CHP Production Devices, the amount of the electrical Output is calculated in accordance with the Directive 2012/27/UE of 25 October, on energy efficiency, the guidelines established by the Commission Decision of 19 November 2008 and the Delegated Regulation (EU) 2015/2402 of 12 October 2015.

E.4 Energy Carrier Conversion and Energy Storage (Including Pumped Storage)

- E.4.1. According to the Manual of Procedures of EEGO, in case of Production Devices with storage capacity, GOs are issued as follows:

GOs are issued for the electrical energy injected into the grid minus the electrical energy consumed by pumps. When applicable, the value carried over from the previous period it is also deducted.

When the amount calculated according to the previous point is negative, it is deducted in the next period and therefore the electricity consumed by pumps is fully compensated.

Therefore, for a reference period i (1 month) the electricity subject to GOs issuance determined as follows:

$$\Delta_i = \min(0, E_{Elec,i} - E_{pump,i} + \Delta_{i-1})$$

$$E_{Renew,i} = \max(0, E_{Elec,i} - E_{pump,i} + \Delta_{i-1})$$

Where,

Δ_i Electric energy of the reference period i to be considered in the following reference period $i+1$.

$E_{Renew,i}$ Electric energy subject to GO issuance in the reference period i

Measurements and data collection are performed automatically and therefore Production Declarations are also automatically generated, as mentioned in point E.2.3.

E.5 Combustion Fuels (e.g. Biomass) and Production Devices with multiple energy inputs

- E.5.1. For Production Devices using multiple fuels, the Registrant who owns or represents the Production Device has to submit Production Declarations declaring the quantity of each fuel consumption during the period.
- E.5.2. Production Declarations are verified using the information available, including measurements provided by Measurement Bodies, audits reports and historical values. GOs are issued after the verification of the Production Declarations.
- E.5.3. Renewable energy subject to GO issuance produced in municipal waste incineration plants is calculated as a percentage of the total electricity injected into the Public Service Electricity Grid. The percentage is determined each year based on waste audits carried out by the competent authorities.
- E.5.4. In the case of CHP Production Devices, the amount of the electrical Output produced is calculated in accordance with the Directive 2004/8/EC of 11 February, on the promotion of cogeneration, the guidelines established by the Commission Decision of 19 November 2008 and the Delegated Regulation (EU) 2015/2402 of 12 October 2015.
- E.5.5. In the case of non-CHP Production Devices that use multiple fuels, the official Annual Production Declarations, submitted to DGEG and the environmental authorities until the end of March in compliance with the Portuguese Legislation, can also be used to determine the percentage of the energy produced by each fuel.



EECS Domain Protocol

E.5.6. To ensure compliance with applicable regulations and registration conditions, Production Devices and Production Declarations are subject to audits and inspections, in accordance with the Manual of Procedures of EEGO.

E.6 Format

E.6.1. EECS Certificates shall be Issued in such format as may be determined by AIB from time to time.

E.7 Transferring EECS Certificates

E.7.1. GOs may be transferred between the following domains:

- a) Within the Domain of Portugal;
- b) From another Domain under the EECS Scheme to the Domain of Portugal;
- c) From the Domain of Portugal to another Domain under the EECS Scheme;
- d) Transfer requests from and to other regions may not be accepted.

E.7.2. The initiation of a transfer is done by the origin Account Holder. Only users duly identified and authorized by the Account Holder may submit transfer requests.

E.7.3. Only valid and tradable GOs can be transferred, which excludes GOs already cancelled or GOs with more than 12 (twelve) months after the end of the production period. Import request for expired or cancelled GOs will be rejected.

E.7.4. Requests from Registrants having outstanding payments to REN due to GOs operations or from suspended Registrants will not be accepted.

E.7.5. The import/export of GOs are subject to validation by REN and shall be carried out within the framework of the pan-European EECS Scheme, via AIB's Hub.

E.7.6. Transfers will be performed as soon as possible within a maximum of:

- a) 5 (five) business days for internal transfers;
- b) 5 (five) business days for imports, counting from the date on which the complete information is received. As part of the verification process, REN may request additional information to the origin AIB registry and/or Account Holder.
- c) 10 (ten) business days for exports. This period may be extended by reasons not attributable to REN, such as the time required for the verification process of the receiving AIB registry.

E.7.7. Internal transfers and export requests are made electronically via a form in the EEGO System, specifying the GOs to be transferred and the destination Account. Import

requests are made to the origin Issuing Body and received by the EEGO System via AIB Hub.

E.7.8. All relevant historical records are available to Account Holders through the EEGO System.

E.7.9. Upon submission of a transfer request, the following procedures are performed:

In the case of an internal transfer (within the Domain of Portugal):

- a) The order is automatically processed by the EEGO System without no further validation;
- b) GOs are withdrawn from the origin Account and registered in the destination Account;
- c) Both Account Holders involved in the operation (origin or destination) are automatically notified by email.

In the case of an export request:

- a) The request is previously validated by REN;
- b) GOs are withdrawn from the origin Account;
- c) The request is submitted to the Issuing Body holding the destination Account;
- d) Upon receipt of confirmation from the destination Issuing Body that the transfer was successful, GOs are recorded in the EEGO System as exported;
- e) Local Account Holder is notified by email.

In the case of an import request:

- a) The information of the request and the GOs are verified. GOs must be compliant with EECS and the national regulatory framework. REN will use all the information available to verify the request and, if deemed necessary, additional information will be requested from the origin Issuing Body and/or Account Holder;
- b) If valid, GOs are registered in the destination Account;
- c) The Issuing Body which requested the transfer is notified;
- d) Local Account Holder is notified by email.

E.7.10. In accordance with the Portuguese law, all GOs under the EECS Scheme from other Member States of the European Union are recognized. REN will use its reasonable endeavours to verify import requests and, in case of substantiated suspicions regarding their accuracy, reliability or veracity, they will not be accepted. Until the acceptance criteria is formally defined and approved, only EECS GOs will be accepted. Imports of GOs issued after July 2021 in third countries with no mutual recognition agreement with

the Union will not be accepted. REN shall notify DGEG and ERSE, in accordance with their respective competences, of possible situations of refusal to recognize GOs.

E.8 Administration of Malfunctions, Corrections and Errors

E.8.1. Once issued, the details of an EECS Certificate cannot be altered or deleted except to correct an error. Errors are corrected as soon as possible.

E.8.2. When an error affects GOs issued in the domain of Portugal, the error is resolved as follows:

If the GOs have not yet been transferred or cancelled, the following procedures are performed:

- a) The Account Holder is notified of the error and the corresponding corrective actions;
- b) Incorrect GOs are withdrawn and new, correct GOs are issued.

If the GOs have already been transferred within the Domain of Portugal:

- a) All Account Holders are notified of the error and the corresponding corrective actions;
- b) Incorrect GOs are withdrawn and new correct GOs are issued into the current Account.

If the GOs have already been cancelled within the Domain of Portugal:

- a) All Account Holders are notified of the error and the corresponding corrective actions;
- b) Incorrect GOs are withdrawn and new correct GOs are issued and cancelled into the current Account.

If the GOs have already been transferred outside the Portugal domain, the Issuing Body responsible for the domain where the GOs are currently registered is contacted in order to find a solution to correct the error.

E.8.3. When an error affects GOs imported to the domain of Portugal, the Issuing Body responsible for the issuing domain is notified to resolve the error. Where an obvious error has occurred and is agreed, REN may correct it even if it was not the issuer.

E.8.4. REN will co-operate with AIB and other Issuing Bodies to identify and correct any errors.

E.8.5. REN will make all available effort to prevent undue enrichment of any Account Holder as a result of an error.

E.8.6. In case of a system fault or a manual mishandling leads to an error in a transfer, REN will return the GOs to the originating Account Holder without undue delay upon noticing.

E.8.7. In cases where, for technical reasons, it is impossible to transfer, REN will act as follows:

- c) if the technical issue is correctable in a reasonable period of time, the transfer will be performed as soon as possible;
- d) if not, as last resort and subject to the agreement of the importing Issuing Body, cancellations for use in another domain (ex-domain cancellation) can be used. AIB and the other Issuing body will be properly notified

E.9 End of Life of EECS Certificates – Cancellation

E.9.1. Cancellation is removing a Certificate from circulation. Once cancelled, a Certificate cannot be moved to any other account, and so is no longer tradable.

E.9.2. According to the Portuguese legislation, GOs are valid for 12 (twelve) months after the end of the production period and must be cancelled up to 18 (eighteen) months after the end of the production period. The EEGO System automatically ensures the compliance with these rules.

E.9.3. Cancellations are initiated by the relevant Account Holder. Only users duly identified and authorized by the Account Holder may submit cancellation requests. All relevant historical records are available to Account Holders through the EEGO System

E.9.4. Cancellation requests are previously validated by REN.

E.9.5. Cancellation requests are made electronically via a form in the EEGO System, specifying the GOs to be cancelled and the beneficiary, which can be:

- a) The Account Holder submitting the request;
- b) Any other Account Holder (usually an energy supplier);
- c) An end-consumer not registered in the EEGO System. In this case, the identity (name and VAT number) and location of the beneficiary shall be provided. After a cancellation operation, the Account Holder that made the request is automatically notified by email.

E.9.6. A Cancellation Statement, in PDF format, is automatically generated by the EEGO System and made available for the Account Holder. See example of a Cancellation Statement, [Annex 5](#).

E.9.7. Ex-domain cancellation requests may be accepted in some cases, such as non-Members of AIB or, as a remedial action, as mentioned in section E.8.7.



EECS Domain Protocol

E.9.8. A cancellation request shall be processed in a maximum of 5 (five) working days.

E.9.9. REN publicly publishes statistical information on GOs cancelations and for disclosure purposes data is reported to ERSE.

E.10 End of Life of EECS Certificates – Expiry

E.10.1. According to the Manual of Procedures of EEGO, GOs can only be:

- a) Transferred – Up to 12 (twelve) months after the end of the production period. After that, GOs expire. Only valid and tradable GOs can be transferred, which excludes GOs already cancelled or expired GOs.
- b) Cancelled – Up to 18 (eighteen) months after the end of the production period. For disclosure purposes, GOs must be cancelled up to 12 (twelve) months after the end of the production period.

E.10.2. When GOs expire, the EEGO System will automatically change their status and the Account Holders are notified by email. All relevant historical records are available to Account Holders through the EEGO System.

E.10.3. The compliance with these rules is automatically guaranteed by the EEGO System.

E.10.4. REN publicly publishes statistical information on expired GOs and for disclosure purposes data is reported to ERSE.

E.11 End of Life of EECS Certificates – Withdrawal

E.11.1. GOs can only be withdrawn to rectify errors as described in section E.8.

E.11.2. GOs which have been withdrawn are no longer valid for transfer or cancellation.

F Issuer's Agents

F.1 Production Auditor

F.1.1. As the Competent Authority for GOs in Portugal, REN is the Production Auditor. Production Devices may be subject to periodic, random and extraordinary audits.

F.1.2. REN may authorize a certified auditor to inspect a Production Device on its behalf.

F.2 Production Registrar

F.2.1. REN acts as the Production Registrar in the Portugal EECS domain.



F.2.2. Roles have been identified in B.3 and contact details are given in Annex 1.

G Activity Reporting

G.1 Public Reports

G.1.1. REN publishes reports include statistical information on the public website. Data includes:

- a) List of Account Holders, VAT number and codes;
- b) Production Devices Names and codes;
- c) Production Devices Locations;
- d) Energy Sources;
- e) Information on certificates that have been Issued;
- f) Information on certificates that have been Transferred;
- g) Information on certificates that have been Cancelled (for use within Portugal; and for use in other Domains);
- h) Information on certificates that have been Exported;
- i) Information on certificates that have been Imported;
- j) Information on certificates that have Expired.

G.1.2. REN will make available to the Secretary General of the AIB, the required relevant data for statistical reporting, no less than every three months.

G.2 Record Retention

G.2.1. REN keeps record of any data in the registry as well as data outside the registry which concern material communications with EECS Market Participants regarding the registration of Production Devices and the Issue, transfer and Cancellation of GOs and this is done in accordance with the following table:

Data	Time	Medium
Standard terms and conditions and its appendices	Minimum 10 years after termination of contract	Both paper and electronic archive (scans)
Production Device – Registration forms, audit	Minimum 10 years after de-registration	Electronic Forms

reports and Authorised User Forms		
Issuing Request (consumption Declarations / Production Declarations /meter reading data)	Minimum 10 years	Electronic Forms
Transaction Data	Minimum 10 years	Database backups

G.2.2. All information complies the data protection rules in force in Portugal and implemented by REN.

G.3 Orderly Market Reporting

G.3.1. REN will enforce the rules in relation to any act of non-compliance with the applicable national regulatory framework and will inform the AIB of any relevant changes about the EECS scheme in Portugal, especially if it requires changes to this Domain Protocol.

G.3.2. REN will also enforce the rules in relation to any act of non-compliance, such as this Domain Protocol, the Standard Terms and Conditions, and the EECS Rules.

G.3.3. Where REN identifies suspicious activity or acts of non-compliance, under section G.3.1 and G.3.2, as soon as REN becomes aware/is practically possible, REN will inform the AIB, the national supervising authorities and other Issuing Bodies of non-compliance where such breach could affect the transfers of GOs with other domains and will provide all required information to the AIB to resolve or investigate such action.

G.3.4. In case of non-compliance, REN has the right to suspend and withdraw an Account Holder from the Scheme, according to the Standard Terms and Conditions and the [Manual de Procedimentos da EEGO](#).

H Association of Issuing Bodies

H.1 Membership

H.1.1. The Association of Issuing Bodies brings together the issuing bodies of European energy certificate schemes. The AIB promotes the use of a standardised system, based on a harmonised environment, structures and procedures in order to ensure the reliable operation of European energy certificate systems. With its independent and peer reviews, and its periodic audits, the AIB provides a robust framework for reliable and fraud-resistant GO systems. Among others, it can also act by suspending transfers



EECS Domain Protocol

through the Hub. Membership of AIB facilitates mutual recognition of GOs across Europe.

- H.1.2. In case REN ceases to be the Authorised Issuing Body for GOs, it shall revise its EECS Registration Database so that each Production Device in the domain ceases to be registered for the purposes of GOs, it shall stop issuing GOs and after a transitional period the register shall be taken offline.
- H.1.3. In case REN ceases to be a Scheme Member of an EECS Scheme, it shall revise its EECS Registration Database so that every Production Device registered therein ceases to be registered for the purposes of EECS. Certificate issuing under EECS would stop, and EECS GOs would remain tradable only until Expiry.
- H.1.4. Should REN withdraw from AIB membership, it will give notice in writing to the EECS Market Participants (EEGO System Registrants) in accordance with the Standard Terms and Conditions. As a result, all records in the EECS Registration Database will be locked at that effective date, no further Issuing will take place and all Production Devices will cease to be registered for the purposes of GOs unless the EECS Registration Database is acquired by another service provider.
- H.1.5. In case REN would be replaced by another Issuing Body for the Portuguese domain by a new Law, AIB would be informed immediately. In this situation, REN would take the necessary actions to guarantee a right transition to the new Issuing Body.

H.2 Complaints to the AIB

- H.2.1. An Account Holder may notify the Secretary General of AIB in writing if:
- a) REN is in breach of any of the provisions of EECS Product Rules in relation to GOs; or
 - b) Any Product Rules do not comply with the relevant provisions of the EECS Rules, and is provided with evidence substantiating such allegation, and evidence that the Authorised Issuing Body has been given adequate opportunity to respond to such allegation.
- H.2.2. The Secretary General shall invite the relevant Authorised Issuing Body to respond to the allegation.

I Change Control

I.1 Complaints to REN

- I.1.1. All complaints shall be submitted to REN in writing. The complaint shall include identification of the complainant, date of the complaint and a detailed description of the complaint subject. REN is obliged to consider the complaint, investigate the circumstances and if possible, within this Domain Protocol, resolve the cause of the complaint. The complainant shall be informed by REN how the complaint is or will be processed within 15 (fifteen) working days. REN strives to resolve all complaints no later than within 30 (thirty) working days and will send written confirmation of the outcome.
- I.1.2. If the complaint regards a decision on REN's part, and REN finds that the complaint is justified, then REN will make every effort to correct the mistake as soon as possible.

I.2 Disputes

- I.2.1. All disputes shall be notified to REN in writing. Any disputes that may arise between REN and the Participants in the EECS Scheme regarding the application, interpretation or integration of the operating rules of the EEGO System and the [Manual de Procedimentos da EEGO](#) shall be settled in good faith and resolved in accordance with the Standard Terms and Conditions and the [Manual de Procedimentos da EEGO](#). Any disputes are processed and resolved by an arbitral tribunal, in accordance with [Manual de Procedimentos da EEGO](#).
- I.2.2. Disputes between two parties where the reason for the dispute is a mistake or technical error on REN's part, shall be notified to REN in writing as soon as possible.
- I.2.3. Disputes between parties related to delayed or incomplete payment or other issues relating to contractual agreements between the parties will not be handled nor resolved by REN.

I.3 Change Requests

- I.3.1. Any EECS Market Participant may submit a proposal for a change to this Domain Protocol.
- I.3.2. The proposal for a change shall be submitted in writing only and addressed to REN and will include:
- a) Identification of the EECS Market Participant;
 - b) Date of the proposal;



EECS Domain Protocol

- c) Detailed description of the proposal subject and reasons for the proposal.

I.3.3. Upon receipt of a request, REN will:

- a) Respond to the request within 10 (ten) working days, describing the procedures to be followed, and estimating when a reply can be expected;
- b) Consult with the other Scheme Participants within Portugal;
- c) Decide whether the request and its consequences are in its opinion reasonable;
- d) Inform the Scheme Participants within Portugal the outcome of this decision.

I.3.4. REN may make such modifications to this Domain Protocol as are in its opinion necessary to the effective and efficient operation of the market.

I.3.5. Any modifications to this Domain Protocol are subject to approval by the AIB that such changes do not conflict with the Principles and Rules of Operation of the Association of Issuing Bodies (AIB) for The European Energy Certification System.

I.3.6. Implementation of modifications will be notified to the Scheme Participant and will take effect on publication of the documentation on the EEGO System.

Annex 1: Contacts List

Authorised Issuing Body Registry Operator Competent Authority Production Registrar Production Auditor	
Company	REN – Rede Eléctrica Nacional, S.A.
Address	Estados Unidos da América n.º 55 – 1749-061 Lisboa
Country	Portugal
Phone	+351 210 013 500
Email	eeego@ren.pt
website	www.ren.pt ; https://eeego.ren.pt

Measurement Bodies	
Company	REN – Rede Eléctrica Nacional, S.A.
Address	Estados Unidos da América n.º 55 – 1749-061 Lisboa
Country	Portugal
Phone	+351 210 013 500
Email	eeego@ren.pt
website	www.ren.pt

Company	EDP Distribuição – Energia, S.A.
Address	Rua Camilo Castelo Branco n.º 43 – 1050-121 Lisboa
Country	Portugal
Phone	+351 808 100 100
website	www.edpdistribuicao.pt

Disclosure and Labelling Supervisory Authority EEGO Supervisory Authority	
Company	ERSE – Entidade Reguladora dos Serviços Energéticos
Address	Rua Dom Cristóvão da Gama, n.º1-3.º andar 1400-113 Lisboa
Country	Portugal
Phone	+351 303 3200
Email	inforotulagem@rese.pt ; erse@erse.pt .
website	www.erse.pt



EECS Domain Protocol

Annex 2: Account Application/Amendment Form

Participant Entity | **EEGO Accountable** | Contacts | Invoicing Data

ENTITY

ENTITY: New Existant

PARTICIPANT ENTITY DATA

REQUEST:
ENTITY NAME:

LEGAL REPRESENTATIVES:

NAME	ROLE	
<input type="text"/>	<input type="text"/>	<input type="button" value="ADD"/>

SHARE CAPITAL €:
TAX ID:
COMERCIAL REGISTER OFFICE:
COM. REG. OFFICE NUMBER:
ADDRESS:
POSTAL CODE:
CITY:
COUNTRY:
TELEPHONE:
FAX:
EMAIL:
ACCESS CODE TO THE CERTIFICATE OF INCORPORATION:
CERTIFICATE OF INCORPORATION:
POWER OF ATTORNEY:

Participant Entity | **EEGO Accountable** | Contacts | Invoicing Data

CONTACT

TYPE: *EEGO accountable*

NAME: <input type="text"/>	ROLE: <input type="text"/>
EMAIL: <input type="text"/>	ADDRESS: <input type="text"/>
TELEPHONE: <input type="text"/>	POSTAL CODE: <input type="text"/>
FAX: <input type="text"/>	CITY: <input type="text"/>
MOBILE: <input type="text"/>	COUNTRY: <input type="text" value="Portugal"/> <input type="button" value="v"/>

IDENTIFICATION DOCUMENT:
Minuta - Registo de Responsável perante a EEGO
COMPLETED DRAFT:



EECS Domain Protocol

Participant Entity | EEGO Accountable | **Contacts** | Invoicing Data

CONTACTS

NAME:	<input type="text"/>	PERMISSIONS:	-- Escolha -- <input type="button" value="v"/>
EMAIL:	<input type="text"/>	ADDRESS:	<input type="text"/>
TELEPHONE:	<input type="text"/>	POSTAL CODE:	<input type="text"/>
FAX:	<input type="text"/>	CITY:	<input type="text"/>
MOBILE:	<input type="text"/>	COUNTRY:	Portugal <input type="button" value="v"/>

Participant Entity | EEGO Accountable | Contacts | **Invoicing Data**

BILLING ADDRESS

ATTN:	<input type="text"/>
ADDRESS:	<input type="text"/>
POSTAL CODE:	<input type="text"/>
CITY:	<input type="text"/>
COUNTRY:	Portugal <input type="button" value="v"/>
TELEPHONE:	<input type="text"/>
FAX:	<input type="text"/>
EMAIL:	<input type="text"/>



Annex 3: Device Registration Form

Facility Data

ENTITY / ENTITY REQUEST

EXISTING ENTITY: -- Escolha --

MEMBERSHIP REQUEST: -- Escolha --

OWNER ENTITY: -- Escolha --

PRODUCTION FACILITY

CODE:

INSTALATION TYPE: -- Escolha --

DESIGNATION:

ADDRESS:

POSTAL CODE:

CITY:

DISTRICT: -- Escolha --

COUNTY: -- Escolha --

LATITUDE*:

LONGITUDE*:

* Geographic location in decimal format (DDD) Latitude: dd.ddddd Longitude: -dd.ddddd

FACILITY LICENSE

LICENSE: *Establishment / Production*

NUMBER:

ASSIGNED BY:

DATE:

ATTACHMENT: [BROWSE](#)

LICENSE: *Exploration*

NUMBER:

ASSIGNED BY:

DATE:

FACILITY DESCRIPTION

DELIVERY POINT CODE - DELIVERY (CPE):

DELIVERY POINT CODE - CONSUMPTION (CPE):

SUPPORT RECEIVED:

TARIFF:

CONNECTION VOLTAGE LEVEL 1 [kV]:

CONNECTION VOLTAGE LEVEL 2 [kV]:

N° OF GROUPS:

POWER CONNECTION [MVA]:

POWER CONNECTION [MW]:

INSTALLED POWER [MVA]:

INSTALLED POWER [MW]:

SINGLE-LINE SCHEME: [BROWSE](#)

PREDOMINANT USE OF HEAT:

HEAT TRANSMISSION MEANS: Steam Hot Water Thermal Fluid
 Gases < 250° Gases ≥ 250°

DESCRIPTION OF THE COGENERATION AND/OR SEPARATED HEAT PRODUCTION EQUIPMENTS:

CUSTOMERS SUPPLIED - HEAT:

CUSTOMERS SUPPLIED BY COGENERATION - ELECTRICITY (CPE):

* To be completed only in the case of installations where the energy flows into the public network at more than 1 voltage level

[SAVE](#) [SEND REQUEST](#)

GENERATOR GROUP

ID:

INSTALLED ELECTRICAL POWER:

CIVIL YEAR OF FIRST ELECTRICITY PRODUCTION:

TECHNOLOGY:

FUELS: Add all fuels consumed by generation group

[ADD FUEL](#)

[ADD/UPDATE GENERATOR GROUP](#)

Facility Data |
 Cogeneration Groups |
 Heat Separated Production Equipments

COGENERATION GROUP

ID:

INSTALLED ELECTRICAL POWER [MW_e]:

CIVIL YEAR OF FIRST ELECTRICITY PRODUCTION:

INSTALLED THERMAL POWER [MW_t]:

C RATIO¹:

β¹:

TECHNOLOGY:

FUELS: Add all fuels consumed by cogeneration group

¹To be completed only in the case of new facilities, based on the elements of licensing

Facility Data |
 Cogeneration Groups |
 Heat Separated Production Equipments

HEAT SEPARATED PRODUCTION EQUIPMENT

IDENTIFICATION:

INSTALLED THERMAL POWER [MW_t]:

FUELS: Point all fuels consumed by the generator group

The following is a summary of the EECS Rules Fact Sheet 'Types of Energy Inputs and Technologies' entries for technologies.

Energy Inputs			
Level 1	Level 2	Level 3	
Solid	Unspecified	Unspecified	
	Municipal waste	Biogenic	
	Industrial and commercial waste	Biogenic	
	Wood	Unspecified	
		Forestry products	
		Forestry by-products & waste	
	Animal fats	Unspecified	
	Biomass from agriculture	Unspecified	
		Agricultural products	
		Agricultural by-products & waste	
Liquid	Unspecified	Unspecified	
	Municipal biodegradable waste	Unspecified	
	Black liquor	Unspecified	
	Pure plant oil	Unspecified	
		Rapeseed (<i>Brassica napus</i> L.)	
		Sunflower (<i>Helianthus annuus</i> L.)	
		Oil palm (<i>Elaeis guineensis</i> Jacq.)	
		Coconut (<i>Cocos nucifera</i> L.)	
		Yatropa	
	Waste plant oil	Unspecified	
	Refined vegetable oil	Unspecified	
		Biodiesel (mono-alkyl ester)	
		Biogasoline (C ₆ -C ₁₂ hydrocarbon)	
	Gaseous	Unspecified	Unspecified
		Landfill gas	Unspecified
Sewage gas		Unspecified	
Agricultural gas		Unspecified	
		Pig manure	
		Cow manure	
		Chicken manure	
		Unspecified manure	
Energy crops			
Gas from organic waste digestion		Unspecified	
Process gas	Biogenic		
Heat	Solar	Unspecified	
	Geothermal	Unspecified	
		Conventional geothermal heat	
		Enhanced dry bed geothermal heat	
	Aerothermal	Unspecified	
	Hydrothermal	Unspecified	
	Process heat	Biogenic	
Unspecified	Unspecified		
Mechanical source or other	Wind	Unspecified	
	Hydro & marine	Unspecified	

Technologies			
Level 1	Level 2	Level 3	
Solar	Unspecified	Unspecified	
	Photovoltaic	Unspecified	
		Classic silicon	
	Thin film		
Concentration	Unspecified		
Wind	Unspecified	Unspecified	
		Onshore	
		Offshore	
Hydro-electric Head	Unspecified	Unspecified	
	Run-of-river head installation	Unspecified	
	Storage head installation	Unspecified	
	Pure pumped storage head installation	Unspecified	
	Mixed pumped storage head	Unspecified	
Marine	Unspecified	Unspecified	
		Tidal	Unspecified
		Onshore	
	Offshore		
	Wave	Unspecified	
		Onshore	
	Offshore		
	Currents	Unspecified	
Pressure	Unspecified		
Thermal	Unspecified	Unspecified	
	Combined cycle gas turbine with heat recovery	Unspecified	
		Non CHP	CHP
	Steam turbine with back-pressure turbine (open cycle)	Unspecified	
		Non CHP	CHP
	Steam turbine with condensation turbine (closed cycle)	Unspecified	
		Non CHP	CHP
	Gas turbine with heat recovery	Unspecified	
		Non CHP	CHP
	Internal combustion engine	Unspecified	
		Non CHP	CHP
	Micro-turbine	Unspecified	
		Non CHP	CHP
Stirling engine	Unspecified		
	Non CHP	CHP	
Fuel cell	Unspecified		
	Non CHP	CHP	
Steam engine	Unspecified		
	Non CHP	CHP	
	CHP		
Organic rankine cycle	Unspecified		
	Non CHP	CHP	
Nuclear	Unspecified	Unspecified	
	Heavy-water reactor	Unspecified	
	Light water reactor	Unspecified	
	Breeder	Unspecified	
	Graphite reactor	Unspecified	
Other	Unspecified	Unspecified	



EECS Domain Protocol

Annex 4: Production/Consumption Declaration

General Data | **Electrical Energy**

PRODUCTION STATEMENT

ENTITY

CODE: 10277
DESIGNATION:

FACILITY CODE: 560609000000002015
DESIGNATION:

GENERAL INFORMATION

REFERENCE PERIOD (YEAR/MONTH):

STATEMENT TYPE: *Inicial*
STATEMENT DATE: 2019-12-06
ISSUED OPTIONS:

General Data | **Electrical Energy**

ELECTRICAL ENERGY

ENERGY FLOWING INTO THE PUBLIC SERVICE ELECTRICITY GRID (RESP)

EQUIPMENT	ELECTRICAL ENERGY [MWh]
G1	<input type="text"/>

ELECTRICAL ENERGY CONSUMED IN PUMPING BY THE PRODUCTION FACILITY

ELECTRICAL ENERGY [MWh]



EECS Domain Protocol

Annex 5: EECS Electricity Cancellation Statement



Digitally signed by REN - Rede Eléctrica Nacional, S.A.
Date: 2022.03.25 11:58:49 GMT
Reason: Guarantees of Origin Cancellation
Location: Portugal



Cancellation Statement - Guarantees of Origin

This cancellation statement certifies that the Guarantees of Origin listed hereunder have been cancelled. Onward sale of this Cancellation Statement is prohibited. The environmental qualities of the associated energy have been consumed and that this Cancellation Statement and these Certificates may not be transferred to any party other than the energy supplier or end-consumer.

Origin Account Holder (cancelled by)	
Account Number	
Name	
VAT Number	
Address	

Beneficiary (cancelled in favour of)	
Type	
Country of Consumption	
AIB Domain	
Account Number	
Name	
VAT Number	
Address	
Delivery Point Codes	

Certificate Cancellation Information	
Cancellation Number	
Reference Code	
Document Issue	
Total Cancelled Certificates	
Cancellation date	
Registry Cancelled From	
Consumption Period	
Remarks	

Cancelled Guarantees of Origin		
Guarantees Details:	From guarantee ID:	Production Period:
	To guarantee ID:	Issuing Date:
	Trading Schemes:	Quantity:
	Country of Issue:	Purpose:
Installation Details:	AIB Domain:	Energy Carrier:
	Installation Code:	Commissioning Date:
	Installation name:	Equipment:
	Installed Capacity[MW]:	Support Type:
	Technology:	Energy Source:

The correctness of the above information is confirmed by the EEGO - Issuing Entity of Guarantees of Origin for the domain Portugal, within the scope of its competences. The information regarding non-registered end consumers and respective observations is the sole responsibility of the requesting entity.

EEGO - Entidade Emissora de Garantias de Origem
Av. Estados Unidos da América, 55
1749-061 Lisboa - Portugal

Tel.: (+351) 210 013 500
Email: eego@ren.pt
www.ren.pt | <https://eego.ren.pt>

Page 1 of 2