



---

**EECS**

**DOMAIN PROTOCOL**

**FOR**

**CREG – BELGIUM (FEDERAL)**

---

Document Reference	AIB-2023-DPBE-CREG Belgium
Prepared by	EECS Scheme Member
Release	3
Date	10 March 2023
Based on EECS Rules	Release 8 v1.2

---

## DOCUMENT CONTROL

Version	Date	Originator	Reviewers

Version	Date	Approver	Responsibility

## CHANGE HISTORY

Version	Description

---

## TABLE OF CONTENTS

A	Introduction.....	- 5 -
B	General.....	- 6 -
B.1	Scope.....	- 6 -
B.2	Status and Interpretation.....	- 6 -
B.3	Roles and Responsibilities.....	- 7 -
B.4	Summary: Issuance scope.....	- 7 -
C	Overview of National Legal and Regulatory Framework.....	- 10 -
C.1	Energy Market context for <i>[the relevant Energy Carriers]</i> .....	- 10 -
C.2	The EECS Framework.....	- 10 -
C.3	National Energy Source Disclosure.....	- 10 -
C.4	National Public Support Schemes.....	- 11 -
C.5	EECS Product Rules.....	- 11 -
C.6	Non-EECS certificates in the Domain.....	- 11 -
C.7	Local Deviations from the EECS Rules.....	- 11 -
D	Registration.....	- 13 -
D.1	Registration of an Account Holder.....	- 13 -
D.2	Resignation of an Account Holder.....	- 13 -
D.3	Registration of a Production Device.....	- 13 -
D.4	De-Registration of a Production Device.....	- 17 -
D.5	Maintenance of Production Device Registration Data.....	- 17 -
D.6	Audit of Registered Production Devices.....	- 19 -
D.7	Registration Error/Exception Handling.....	- 19 -
E	Certificate Systems Administration.....	- 21 -
E.1	Issuing EECS Certificates.....	- 21 -
E.2	Processes.....	- 22 -
E.3	Measurement.....	- 23 -
E.4	Energy Carrier Conversion and Energy Storage (Including Pumped Storage).....	- 24 -
E.5	Combustion Fuel (e.g., Biomass) Input and Production Devices with multiple energy inputs	- 24 -
E.6	Format.....	- 25 -
E.7	Transferring EECS Certificates.....	- 25 -
E.8	Administration of Malfunctions, Corrections and Errors.....	- 26 -

---

E.9	End of Life of EECS Certificates – Cancellation.....	- 27 -
E.10	End of Life of EECS Certificates – Expiry.....	- 29 -
E.11	End of Life of EECS Certificates – Withdrawal.....	- 29 -
F	Issuer’s Agents.....	- 30 -
F.1	Production Auditor.....	- 30 -
F.2	Production Registrar.....	- 30 -
F.3	Measurement Body(/ies).....	- 30 -
G	Activity Reporting.....	- 31 -
G.1	Public Reports.....	- 31 -
G.2	Record Retention.....	- 31 -
G.3	Orderly Market Reporting.....	- 31 -
H	Association of Issuing Bodies.....	- 33 -
H.1	Membership.....	- 33 -
H.2	Complaints to the AIB.....	- 33 -
I	Change Control.....	- 34 -
I.1	Complaints to [EECS Scheme Member].....	- 34 -
I.2	Disputes.....	- 34 -
I.3	Change Requests.....	- 34 -
Annex 1	Contacts List.....	- 35 -
Annex 2	Account Application/Amendment Form.....	- 36 -
Annex 3	Device Registration Form.....	- 37 -
Annex 4	Production/Consumption Declaration.....	- 38 -
Annex 5	EECS Cancellation Statement.....	39

---

## A INTRODUCTION

This Domain Protocol describes how the EECS Standard has been implemented in a certain Domain (country/region) for a certain type of energy certificate and it indicates where that system deviates from that standard. The EECS framework including the Domain Protocol aims to ensure robustness and transparency for all parties involved.

A Domain Protocol promotes quality and clarity, as it:

- explains local rules;
- provides clear information to all stakeholders (consumers, market parties, other members, government, the EU Commission etc.);
- facilitates assessment of compliance and permissible deviation from the EECS Rules;
- facilitates audit; and
- translates local rules into a single format and language, supporting each of the above.

Important contact information is provided in Annex 1.

## B GENERAL

### B.1 Scope

This section demonstrates compliance with the following EECS Rules:

<b>A11.1.1</b>	<b>C3.1.1</b>	<b>E6.2.1a</b>	<b>E6.3.1</b>	<b>E6.3.2</b>	<b>N2.1.1</b>
----------------	---------------	----------------	---------------	---------------	---------------

B.1.1 This Domain Protocol sets out the procedures, rights, and obligations, which apply to the Domain of Belgium (Federal) and relate to the EECS Electricity Scheme as defined in the EECS Rules.

B.1.2 The Domain of Belgium (Federal) coincides with the sea areas over which Belgium can exercise jurisdiction according to international law. These areas are circumscribed by:

- the Act of 6 October 1987 on determining the width of Belgium’s Territorial Seas;
- the Act of 29 April 1999 concerning Belgium’s Exclusive Economic Zone in the North Sea.

Production Device qualification for this Domain will be determined by the physical location of the Production Device within the boundaries of the Domain, regardless of whether or not the grid connection of the Production Device is also situated within the Domain.

B.1.3 Further to Article 2 of the Royal Decree of 30 July 2013 regarding the setting-up of a system for issuing Guarantees of Origin for electricity generated from renewable sources, CREG is authorised to Issue EECS Certificates relating to the following EECS Product(s):

- Guarantees of Origin (see EECS Fact Sheet 17).

B.1.4 CREG is authorised to Issue EECS Certificates relating to the following EECS Product Type(s):

- Renewable electricity (RES-E)

B.1.5 CREG is authorised to Issue EECS Certificates relating to the following Energy Carriers: *electricity* and the following energy sources: *renewable*.

B.1.6 CREG is authorised to Issue the following types of energy certificates outside of the EECS Framework: national GOs and green energy certificates

The following parts of this Domain Protocol also apply for these for these non-EECS certificates: none.

### B.2 Status and Interpretation

This section demonstrates compliance with the following EECS Rules:

<b>E6.2.1d</b>	<b>E6.2.4</b>	<b>E6.3.1</b>	<b>E6.3.4</b>
----------------	---------------	---------------	---------------

B.2.1 This document refers to EECS Rules 8 version 1. It is based on the Domain Protocol template release from June 2022.

B.2.2 The EECS Rules are subsidiary and supplementary to national legislation.

- B.2.3 The EECS Rules and its subsidiary documents are implemented in Belgium (Federal) in the manner described in this Domain Protocol. Any deviations from the provisions of the EECS Rules that may have material effect are set out in section C.7 of this document.
- B.2.4 The capitalised terms used in this Domain Protocol shall have the meanings ascribed to them in the [EECS Rules](#) except as stated in section C.7 of this document.
- B.2.5 This Domain Protocol is made contractually binding between any EECS Participant and CREG by agreement in the form of the Standard Terms and Conditions.
- B.2.6 In the event of a dispute, the approved English version of this Domain Protocol will take precedence over a local language version.

### B.3 Roles and Responsibilities

This section demonstrates compliance with the following EECS Rules:

<b>A11.1.1</b>	<b>C3.1.1</b>	<b>E4.2.2</b>	<b>E6.2.1c</b>	<b>H</b>
----------------	---------------	---------------	----------------	----------

- B.3.1 The Authorised Issuing Body for Guarantees of Origin (GOs) in Belgium (Federal) is CREG. Its role is to administer the EECS Registration Database and its interface with the EECS Transfer System.
- B.3.2 The Competent Authority Guarantees of Origin in Belgium (Federal) is CREG. Its role is defined by legislation to be responsible for the operation of for Guarantees of Origin in Belgium (Federal).
- B.3.3 The Authorised Measurement Bodies are the Transmission and Distribution System Operators listed on the website <https://www.vreg.be/nl/overzicht-netbeheerders>. They are the bodies established under national and regional legislation to be responsible for the collection and validation of measured volumes of energy used in national financial settlement processes.
- B.3.4 Contact details for the principal roles and Issuing Body agents are given in Annex 1.
- B.3.5 The EECS Registration Database is operated by CREG.

### B.4 Summary: Issuance scope

- B.4.1 In summary, CREG has been authorised to Issue the following types of energy certificates:

	Issuing Body issues certificates for Electricity		Electricity – Product Type
	Energy Source	Source	Technology (= High-Efficiency Cogeneration)
<b>EECS GO</b>	RES-E	RES-E	<b>N</b>

	Fossil		
	Nuclear		
<b>National GO (non-EECS*)</b>	<i>[please specify characteristics]</i>		
<b>EECS Support Certificate</b>	<i>[please specify characteristics]</i>		
<b>EECS Target Certificate</b>	<i>[please specify characteristics]</i>		
<b>EECS NGC (name)</b>	<i>[please specify characteristics where relevant]</i>		
<b>National certificate other than GO (non-EECS*)</b>	<i>[please specify characteristics]</i>		

(\* ) Non-EECS certificates may not be transferred over the AIB hub.

Issuing Body issues certificates for Gas		Type of Gas**	
	Energy Source		
<b>EECS GO</b>			



<b>National GO (non-EECS*)</b>	<i>[please specify characteristics]</i>			
<b>EECS Support Certificate</b>				
<b>EECS Target Certificate</b>				
<b>EECS NGC (name)</b>				
<b>National certificate other than GO (non-EECS*)</b>	RES-E	RES-E	N	N

(\* Non-EECS certificates may not be transferred over the AIB hub.

Issuing Body issues certificates for:		Thermal energy		
<b>National GO (non-EECS*)</b>				
<b>EECS Target Certificate</b>				
<b>National certificate other than GO (non-EECS*)</b>				

(\* Non-EECS certificates may not be transferred over the AIB hub.

## C OVERVIEW OF NATIONAL LEGAL AND REGULATORY FRAMEWORK

### C.1 Energy Market context for electricity

The Belgian electricity market was liberalised pursuant to Directive 96/92/EC of the European Parliament and of the Council of 19 December 1996 concerning common rules for the internal market in electricity. It complies with the EU architecture of the energy market.

### C.2 The EECS Framework

This section demonstrates compliance with the following EECS Rules:

<b>D3.1.2</b>	<b>E6.2.1b</b>	<b>E6.2.1d</b>	<b>N8</b>
---------------	----------------	----------------	-----------

C.2.1 For this Domain, the relevant local enabling legislation is as follows:

The legal basis for issuing Guarantees of Origin for electricity produced from water, currents or winds in the sea areas over which Belgium can exercise jurisdiction according to the international law of the sea, was established by Article 7, § 1, 1° of the Act of 29 April 1999 Concerning the Organization of the Electricity Market (hereinafter: Electricity Act).<sup>1</sup>

Implementing legislation followed with the Royal Decree of 30 July 2013 Concerning the Set-up of a System for Issuing Guarantees of Origin for Electricity Generated from Renewable Energy Sources (hereinafter: GO Decree).<sup>2</sup> It provides that the GOs:

- are issued by CREG at least once a quarter, in electronic form, upon application by the producer;
- are issued on the basis of the electricity injected into the transmission or distribution grid, produced as from 1 January 2012;
- have a lifetime of twelve months, except when the producer has not received them for reasons that he is not responsible for, in which case the GOs may be used for up to six months upon issuance.

C.2.2 CREG has been properly appointed as an Authorised Issuing Body for Guarantees of Origin under Article 2, § 1 of the Royal Decree of 30 July 2013 Concerning the Set-up of a System for Issuing Guarantees of Origin for Electricity Generated from Renewable Energy Sources.<sup>3</sup>

### C.3 National Energy Source Disclosure

This section demonstrates compliance with the following EECS Rules:

E3.3.14			
---------	--	--	--

<sup>1</sup> [http://www.ejustice.just.fgov.be/cgi\\_loi/change\\_lg.pl?language=nl&la=N&cn=1999042942&table\\_name=wet](http://www.ejustice.just.fgov.be/cgi_loi/change_lg.pl?language=nl&la=N&cn=1999042942&table_name=wet).

<sup>2</sup> [http://www.ejustice.just.fgov.be/cgi\\_loi/change\\_lg.pl?language=nl&la=N&cn=2013073003&table\\_name=wet](http://www.ejustice.just.fgov.be/cgi_loi/change_lg.pl?language=nl&la=N&cn=2013073003&table_name=wet).

<sup>3</sup> [http://www.ejustice.just.fgov.be/cgi\\_loi/change\\_lg.pl?language=nl&la=N&cn=2013073003&table\\_name=wet](http://www.ejustice.just.fgov.be/cgi_loi/change_lg.pl?language=nl&la=N&cn=2013073003&table_name=wet).

In the domain of Belgium (Federal), there is no legislation in place requiring suppliers to disclose the source of their electricity to consumers. As a consequence, Guarantees of Origin may not be used (cancelled) locally, but must be exported to other domains (cf. infra).

#### C.4 National Public Support Schemes

This section demonstrates compliance with the following EECS Rules:

None directly			
---------------	--	--	--

Offshore wind farms in the waters over which Belgium has jurisdiction are awarded, during a period of 20 years, green power certificates which the producers are entitled to sell to the TSO at a fixed minimum price of 107 €/MWh for electricity generation from the first 216 MW installed and 90 €/MWh for additional installed capacity (per wind farm). For new wind farms (financial close concluded after 1 May 2016), this minimum price is not fixed, but calculated each month according to the formula: LCOE minus [(electricity reference price x (1 - correction factor) + the value of the Guarantees of Origin) x (1 - net loss factor)].

The TSO must also finance one-third of the cost of the submarine connection cable, with a maximum of €25 million (Article 7, § 2 of the Electricity Act).

Finally, there is a specific regime for production deviations with respect to offshore wind power, whereby imbalance penalties for deviations within a 30% band are reduced (Article 7, § 3 of the Electricity Act).

None of these support schemes have any bearing on electricity source disclosure, as no such disclosure is implemented within the Belgium (Federal) Domain.

#### C.5 EECS Product Rules

This section demonstrates compliance with the following EECS Rules:

E6.2.1f	E6.2.1g		
---------	---------	--	--

C.5.1 The EECS Product Rules as applied in Belgium (Federal) are set out within sections D Registration and E Certificate Systems Administration of this document.

#### C.6 Non-EECS certificates in the Domain

Not applicable

#### C.7 Local Deviations from the EECS Rules

This section identifies those areas where there are minor differences from the EECS Rules without impacting the integrity of EECS Certificates

- Deviation from EECS Rule C.2.2.3: Re-registration has no added value above what is achieved by the mandatory yearly audit and the additional audits which CREG may at any time require (cf. DP. D.3 and D.5).

- 
- Deviation from EECS Rule C.3.4.1: The end-date for issuance of GOs is not one month after the end of the production month. The relevant legislation prevails (cf. DP E.1.3).
  - Deviation from EECS Rule C.3.4.4: Issuance of GOs is not limited to output produced after registration. The relevant date is the approval by the Production Auditor, as confirmed during the Registration process.
  - Deviation from EECS Rules C.6.1.1, C.7.2.2 and E.3.3.14: In the domain of Belgium (Federal), there is no legislation in place requiring suppliers to disclose the source of their electricity to consumers. As a consequence, Guarantees of Origin may not be used (cancelled) locally, but must be exported to other domains (cf. infra).

## D REGISTRATION

### D.1 Registration of an Account Holder

This section demonstrates compliance with the following EECS Rules:

<b>G2.2.1</b>			
---------------	--	--	--

Any person who is not a Member of the Association of Issuing Bodies or such Member’s Affiliate or agent may be a EECS GO RES-E Scheme Participant.

In order to register with CREG and open an account, the applicant must fill out an application form (see Annex 2). If it is incomplete, CREG shall inform the applicant of this within 10 working days. The decision to approve or reject the application shall be taken within 10 working days of receiving a duly completed application form.

Any subsequent change in the information thus submitted must be notified to CREG without delay.

As part of the application process, the EECS GO RES-E Scheme Participant must agree to the Standard Term and Conditions of CREG. They may also, at any time, be required to fill out a “Know Your Customer” (KYC) questionnaire for anti-fraud purposes.

KYCs will be required if the applicant is not a licensed producer, access responsible party or supplier in Belgium.

Account holders do not have direct access to the registry.

Charges for services, if any, may be found in section ‘Guarantees of Origin’ on the CREG website.

### D.2 Resignation of an Account Holder

This section must demonstrate compliance with the following EECS Rules:

None directly			
---------------	--	--	--

Account Holders may at any time terminate their account by giving prior notice hereof to CREG by letter with recorded delivery. The notice shall mention the date at which the termination will be effective.

CREG will seal and close the account as of the effective date, unless any GOs remain in the account by that date. In that case, CREG will notify the Account Holder that an additional period of one month is granted in order to handle the remaining GOs.

### D.3 Registration of a Production Device

This section demonstrates compliance with the following EECS Rules:

<b>C2.1.1</b>	<b>C2.1.2</b>	<b>C2.2.4</b>	<b>D4.1.2</b>	<b>E3.3.10</b>	<b>E3.3.11</b>	<b>N6.2</b>
---------------	---------------	---------------	---------------	----------------	----------------	-------------

---

Only the owner of a Production Device, or a Registrant duly authorised by the owner, may register a Production Device, which is located in Belgium (Federal) in the EECS Registration Database.

The Registrant of the Production Device must provide evidence to the satisfaction of CREG that it has the appropriate authority to register the Production Device and that it can comply with the requirements of (i) the EECS GO RES-E Scheme under which EECS GO Certificates shall be issued for the Generation of the Production Device and (ii) the Standard Terms and Conditions and this Domain Protocol with respect to the imposition of duties on the owner and/or operator of the Production Device.

An applicant registering a Production Device must provide the following information:

- (i) the applicant's name and address and any additional contact details;
- (ii) the Product with respect to which it is applying for registration;
- (iii) the Transferables Account into which EECS Certificates (corresponding to the Product) in respect of the Output of such Production Device are to be Issued, or a request to open such an account;
- (iv) the location of the Production Device, being the latitude and longitude of the Device or all of its constituent units, in accordance with the EECS Rules Fact Sheet "Geographical Coordinates";
- (v) details of the Exit Measurement Point(s) for the Production Device;
- (vi) details of any Production Auxiliaries associated with the Production Device;
- (vii) where there are Production Auxiliaries associated with the Production Device and the consumption of these Production Auxiliaries is not determined at an Exit Measurement Point, details of Entry Measurement Point(s) at which the Input consumed by the Production Device is determined;
- (viii) (irrespective of whether or not there is any intention to use such Inputs in connection with the Production Device) all Inputs that may be converted into Outputs by the Production Device, by reference to the Input types set out in the EECS Rules Fact Sheet "Types of Energy Inputs and Technologies";
- (ix) the type of Production Device, where this reflects the relevant fuel source(s) for and technology of that Production Device by reference to the fuel sources and technologies set out in the EECS Rules Fact Sheet "Types of Energy Inputs and Technologies";
- (x) the Capacity of the Production Device and all of its constituent units;
- (xi) where at the time of such application it has been commissioned, the date on which that Production Device was commissioned (or multiple dates where relevant);
- (xii) the identity of the Authorised Measurement Body or, where appropriate, Approved Measurement Body responsible for collecting and determining the measured values of the Outputs of the Production Device and providing such measured values to CREG;
- (xiii) details of any payments (other than payments arising from the sale of EECS Certificates):
  - 1) which have been received by any person in relation to the Production Device under any of the Public Support"; and
  - 2) that are due to accrue to any person in relation to the Production Device under any such Public Support scheme;

---

(xiv) a diagram of all the constituent units of that Production Device, including details of the location of:

- 1) the Exit Measurement Point(s) for the Production Device;
- 2) any Production Auxiliaries for the Production Device;
- 3) any Entry Measurement Points for the Production Device;
- 4) the location of any transformer substations at the site of the Production Device.

(xv) the name commonly used to identify the Production Device, provided that the applicant agrees to this information being recorded on EECS Certificates that are Issued in relation to the Production Device;

The registration form containing all the items listed above is attached as Annex 3 to the Domain Protocol.

The Registrant must warrant that the information provided to CREG in connection with its application is complete and accurate and that the Production Device meets the Qualification Criteria for Guarantees of Origin set forth by the GO Decree.

The Registrant must specify whether the Production Device is eligible for any support payments (other than those arising from the sale of GOs) which have been received by, or are due to accrue to, any person in relation to the Production Device under any of the Public Support Schemes.

The CREG will decide within 2 months after receipt of the complete application file whether or not the Production Device concerned meets the conditions for granting of certificates.

If required by CREG, the Registrant must have the information in the registration form verified by a Production Registrar (see D.2.4 below) as part of the approval process.

An application for the registration of a Production Device for the purposes of pursuing GOs under the EECS Electricity Scheme will be rejected if:

- 1) in relation to that application, the applicant has failed to comply with any requirements of this Domain Protocol or the Standard Terms and Conditions;
- 2) the Qualification Criteria set out by the GO Decree are not satisfied in respect to that Production Device;
- 3) there are one or more generating auxiliaries for that Production Device not fitted with Import Meters and lacking other satisfying registration method; or
- 4) the Production Registrar is prevented from satisfactorily verifying the application by the applicant or the owner or operator of the relevant Production Device.

On successful completion of the registration process, CREG will assign a unique identifier to each registered Production Device, if one has not already been assigned in that EECS Registration Database under another EECS Scheme. The identifier consists of a number with 18 numeric characters that also identifies the Domain of origin. GS1 coding is used.

The Registrant consents to the publication by CREG or its Registry Operator of data provided in the course of its application for registration in relation to each of its Production Device registered on the database on its web page [www.creg.be](http://www.creg.be), with the exception of:

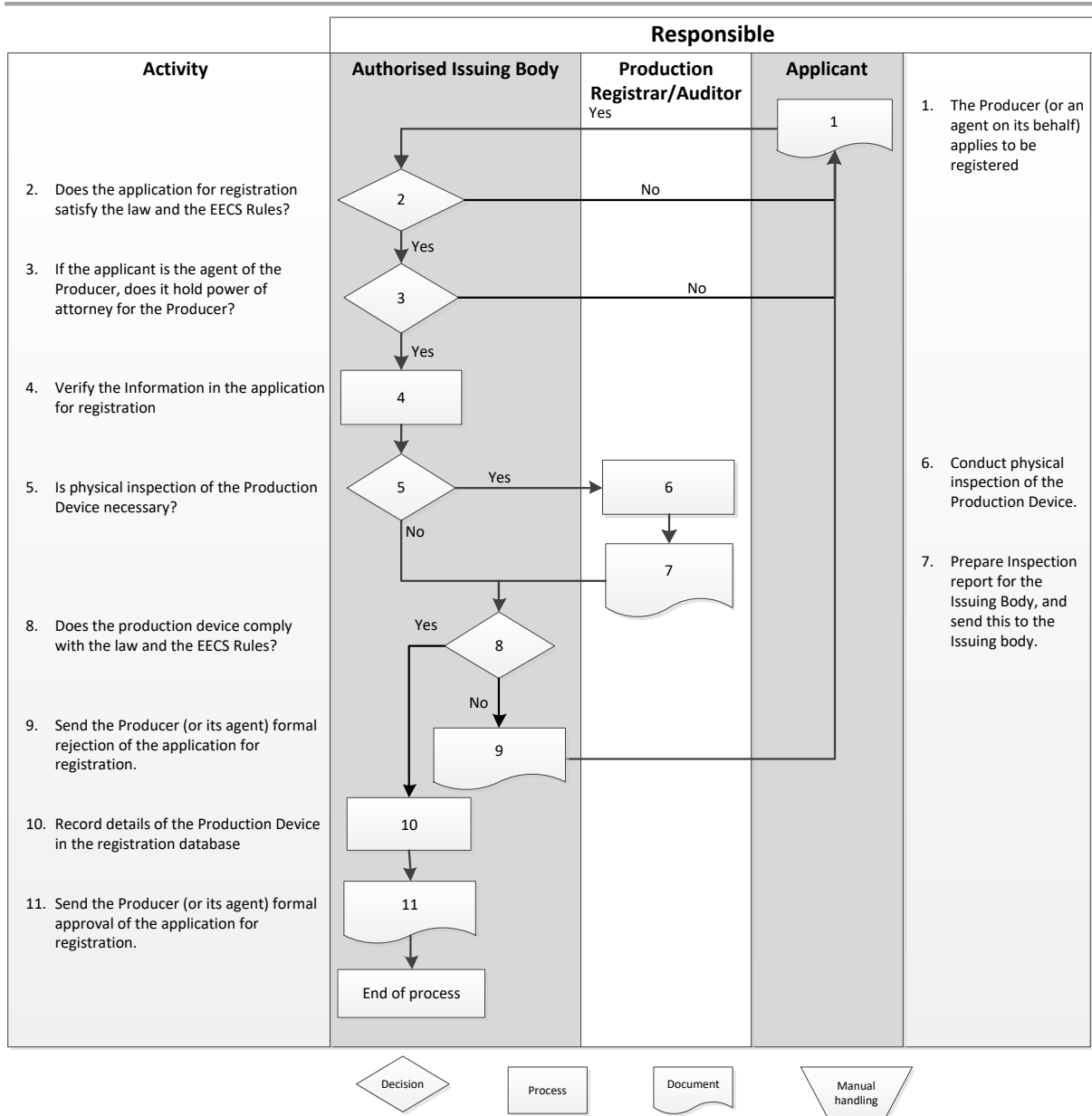
- 1) detailed descriptions of plant and equipment;

- 
- 2) graphical representations of the Production Device, including diagrams and photographs; and
  - 3) details of:
    - the person responsible for the application; and
    - where the Registrant of the Production Device is not its owner, the Production Device's owner.

As part of the registration process for the Production Device, a conformity attestation issued by an accredited inspection body must be shown, independently verifying the information submitted by the applicant. For the purposes of this Domain Protocol, this accredited inspection body is a Production Auditor. It performs a mandatory audit, at least yearly, of the Production Device and reports the result to CREG. Upon request of CREG, it performs ad hoc audits of Production Devices.

The Registrant of a Production Device must permit CREG and/or the Production Auditor to access the Production Device or records associated with it, its energy output and sources of energy when conducting inspections in accordance with this section.





### D.4 De-Registration of a Production Device

This section must demonstrate compliance with the following EECS Rules:

None directly			
---------------	--	--	--

### D.5 Maintenance of Production Device Registration Data

This section demonstrates compliance with the following EECS Rules:

C2.2.1	C2.2.2	C2.2.3	C2.2.5	D5.1.2
--------	--------	--------	--------	--------

D.5.1 The Registrant of a Production Device for the purposes of the EECS Product is required:

(a) to notify CREG, in advance of such changes coming into effect, of any planned changes that will result in:

- i. the information recorded in the CREG's EECS Registration Database in relation to the Production Device becoming inaccurate; or
- ii. the PD Qualification Criteria for any Product ceasing to be satisfied with respect to that Production Device; and

(b) to notify CREG of any unplanned changes that have resulted in:

- i. the information recorded in CREG's EECS Registration Database in relation to the Production Device becoming inaccurate; or
- ii. the PD Criteria for the EECS Product ceasing to be satisfied with respect to that Production Device;

(c) where requested to do so, to permit CREG (or its Production Registrar), its servants or agents to inspect that Production Device including, if so required, without prior notice;

(d) to provide CREG (or its Production Auditor), its servants and agents with access to such records as CREG (or Production Auditor) may request in relation to that Production Device, its Outputs and Inputs, including, if so required, without prior notice;

(e) to re-apply for registration for the Production Device for the purposes of the Product on each occasion that it notifies CREG of changes that have occurred, or are planned, with respect to that Production Device, which as the case may be, have resulted in, or will result in, the information recorded in the EECS Registration Database with respect to that Production Device becoming inaccurate.

On receipt of a change of details notification (following an inspection or otherwise), CREG will evaluate the impact of the changes on the Qualifying Criteria and respond to the Registrant within one month specifying the decision taken. Where appropriate CREG shall amend its EECS Registration Database accordingly.

D.5.2 Where the Capacity of an existing Production Device increases for any reason, including refurbishment or enhancement of the Production Device, then such additional capacity may be registered in the relevant EECS Registration Database as a separate element of that Production Device with:

- a) the Capacity specified in the application for registration;
- b) the date on which the Production Device became operational as specified in the application for registration.

D.5.3 Where CREG becomes aware that a Production Device no longer fulfils, or will no longer fulfil, the Qualification Criteria, the Registration Database record for that Production Device will be updated to show that the Production Device no longer qualifies for GOs under the EECS Electricity Scheme with effect from:

(1) (in relation to planned changes notified in advance) the date on which such planned changes are due to come into effect; or

(2) (in relation to other changes) as soon as reasonably practicable after becoming so aware.

## D.6 Audit of Registered Production Devices

This section demonstrates compliance with the following EECS Rules:

<b>E3.3.7</b>	<b>E3.3.8</b>	<b>D5.1.2</b>	
---------------	---------------	---------------	--

D.6.1 The Production Devices shall be audited as provided for by Belgian law, more specifically by the GO Decree. This includes a mandatory audit, at least yearly, of the Production Device by an accredited inspection body, which reports the result to CREG. The accredited inspection body may also be required by CREG to perform an ad hoc audit of the Production Device for which it was appointed.

CREG shall be entitled to conduct, at its own discretion, inspections of Production Devices registered on its EECS Registration Database and the associated Entry Measurement Point and Exit Measurement Point with a view to satisfying itself that:

- the information recorded in relation thereto on the EECS Registration Database is accurate;
- the Registrant and, where applicable, the owner and/or operator of the Production Device, is complying with all relevant obligations under the relevant Product Rules; and
- such Production Device meets the PD Qualification Criteria for the EECS Products in relation to which it is registered.

D.6.2 CREG shall be entitled to conduct, at its sole discretion, ad hoc inspections of records associated with relevant Public Support in relation to Production Devices registered on its EECS Registration Database for the purposes of EECS Schemes.

D.6.3 The period between inspections of a Production Device will not exceed 5 years.

D.6.4 Refusal to permit access to a Production Device may be considered a breach of the Standard Terms and Conditions.

D.6.5 If an inspection identifies material differences from the details recorded on the EECS Registration Database, the Registrant must re-apply for registration of the Production Device.

D.6.6 Inspections verify that the Measurement Devices are correctly positioned in order to measure the quantity needed for calculating the amount of EECS Certificates to be Issued.

D.6.7 Inspections confirm the accuracy of the Measurement Devices involved in the calculation of the amount of EECS Certificates to be Issued to be acceptable in accordance with the existing regulatory framework and applicable standards.

D.6.8 Inspections confirm that the formula for calculating the amount of EECS Certificates correctly reflects the amount of Output that qualifies for the Purpose of these EECS Certificates.

## D.7 Registration Error/Exception Handling

This section demonstrates compliance with the following EECS Rules:

<b>C2.2.2</b>	<b>E4.2.7</b>		
---------------	---------------	--	--



- 
- D.7.1 The Account Holder is responsible for the correctness of the data of a Production Device provided to CREG.
  - D.7.2 Any errors in EECS Certificates resulting from an error in the registered data of a Production Device will be handled in accordance with section E.9.

## E CERTIFICATE SYSTEMS ADMINISTRATION

### E.1 Issuing EECS Certificates

This section demonstrates compliance with the following EECS Rules:

<b>A2.1.1</b>	<b>A2.1.2</b>	<b>C3.1.1</b>	<b>C3.2.1</b>	<b>C3.3.1</b>
<b>C3.4.2</b>	<b>C3.4.4</b>	<b>E3.3.10</b>	<b>N3.1.1</b>	

E.1.1 GOs shall only be issued in respect of the Output from a Production Device which is, at the time of Issue:

- a) situated in the Belgian Offshore Area as defined in section B.1; and
- b) registered in the EECS Registration Database of CREG for the purposes of GO RES-E Certificates.

E.1.2 GOs shall only be Issued in respect of Output:

- a) which is produced by an Originating Production Device which meets the PD Qualification Criteria in respect of that EECS Product;
- b) that meets the Output Criteria for that EECS Product;
- c) in respect of which CREG is in receipt of measured values of Output collected and determined by the TSO/DSO into whose grid the Output is being injected and which, having regard to the relevant Consumption Declaration where relevant, corroborate the amount so specified; and
- d) which has been determined in accordance with the Product Rules for that EECS Product.

E.1.3 CREG shall only Issue EECS GOs to Registrants and in respect of the Output of a Production Device:

- a) produced after the date on which the Production Device was positively reviewed by the Production Auditor;
- b) where the last day on which such Output was generated is not more than:
  - i. thirteen (13) calendar months after the first day on which the measured Output was generated;
  - ii. twelve (12) calendar months before the date of Issue of any related EECS certificates;
- c) which has been found to be produced from installations for the production of renewable energy from water, currents or winds
- d) the measured value of which has been collected and determined by an Authorised Measurement Body.

The provision under (b) shall not apply to Guarantees of Origin which have not been issued to the certificate holder for reasons that he is not responsible for. Such Guarantees of Origin may be used for up to six months upon their issuance.

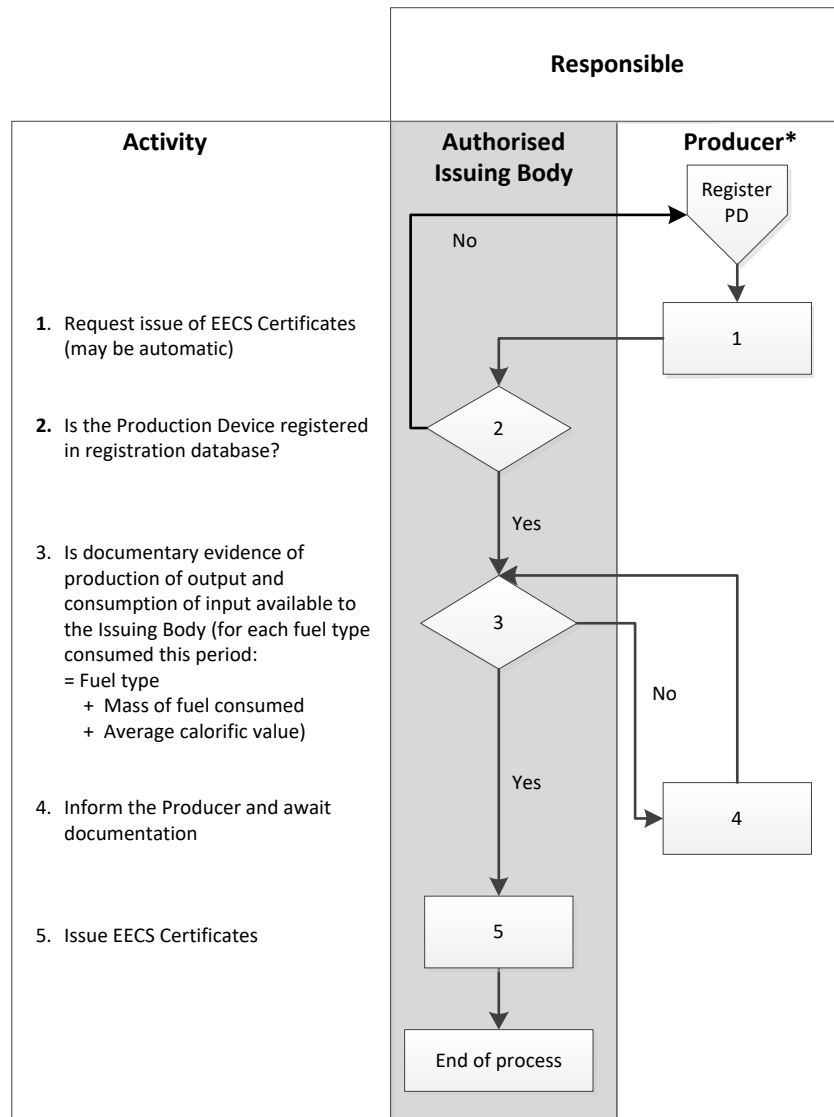
- E.1.4 GOs shall only be Issued in respect of Output which has not been and is not being otherwise Disclosed, including by the Issue of any other Certificate of any variety (save to the extent permitted under Section C.8 of the EECS Rules).
- E.1.5 The Face Value of GOs shall be 1 MWh. In accordance with Article 3, § 3 of the GO Decree, any identifiable residual kWh will be carried forward to the next issuing period.

## E.2 Processes

This section demonstrates compliance with the following EECS Rules:

<b>A.4</b>	<b>C3.4.1</b>	<b>C3.4.3</b>	<b>C3.5.1</b>	<b>C3.5.2</b>
<b>C3.5.3</b>	<b>C4.1.1</b>	<b>C4.1.3</b>	<b>D7.1.2</b>	<b>E.2</b>
N6.4.				

- E.2.1 Subject to Section E.2.2, the EECS Certificates in respect of the Output of a Production Device shall be Issued no later than one month after the CREG received the issuance request by the Registrant, fully and adequately completed.
- E.2.2 Guarantees of Origin shall only be Issued:
- in respect of Qualifying Output;
  - in respect of the Originating Production Device and period claimed in a Production Declaration specified by the Registrant of the Production Device or an Account Holder duly authorised on its behalf, in accordance with the requirements of the Product Rules for Guarantees of Origin.
- E.2.3 GOs shall be Issued by CREG by recording its details on CREG’s EECS Registration Database in the Account nominated for such purposes by the Registrant of the Originating Production Device.
- E.2.4 CREG shall inform an Account Holder of the Issuance of any GO into that Account Holder’s Account and of that GOs details through sending account extracts, or otherwise make such information available to that Account Holder.
- E.2.5 No GOs shall be issued in respect of electricity consumed by Production Auxiliaries (including pumping).
- E.2.6 The Account Holder of a Transferables Account should be treated (as between the Account Holder and that Member) as the owner of the EECS Certificates.
- E.2.7 CREG shall ensure that its manual and automated information systems for the Issue, holding and transfer of EECS Certificates are able to support audit of all transactions with respect to EECS Certificates.
- E.2.8 CREG shall use in connection with any EECS Scheme the EECS Registration Database and Transfer Links approved for the purposes of that EECS Scheme.



\* The Producer is the generic term for the party which requests certificates, and might include production aggregators, portfolio managers etc.

### E.3 Measurement

This section demonstrates compliance with the following EECS Rules:

<b>D6.1.2</b>	<b>N6.4.</b>		
---------------	--------------	--	--

E.3.1 The Measurement Criteria are as follows:

- a) the Registrant of a Production Device for the purposes of the EECS Product, is responsible for the delivery, quality and accuracy of measured values with respect to the Output of that Production Device; and

- b) the Measurement Frequency shall be such that the period between measurements may not be more than one month

CREG shall verify the accuracy of the measured values provided by the Registrant against readings provided by the Measurement Bodies on a monthly basis.

E.3.2 Where the Product relates to the energy source of the Output, the amount of Output determined for the purposes of EECS Certificates corresponding to that EECS Product as having been produced by that Production Device shall be:

- a) where the Originating Production Device only produces Output from a single Input, the amount of Nett Electrical Energy Generation produced by that Production Device provided that Output meets the Output Criteria for the Product;
- b) where the Originating Production Device produces energy from more than one Input, the amount of Nett Electrical Energy Generation produced by that Production Device multiplied by the Energy Input Factor for the relevant Input.

Where an EECS Product relates to the technology type of the Originating Production Device Output, the amount of Output determined for the purposes of EECS Certificates corresponding to that EECS Product as having been produced by that Production Device shall be the amount of Output which meets the Output Criteria for that Product.

#### E.4 Energy Storage

This section demonstrates compliance with the following EECS Rules:

N6.4.4	N6.4.5	C3.2.4	C3.2.2	C3.6
--------	--------	--------	--------	------

A person submitting a Production Declaration in relation to a Production Device for which one of the Inputs is stored energy shall be obliged to submit (in respect of the same period as that to which the Production Declaration relates) a Consumption Declaration and to specify therein the amount of Output consumed in placing energy (in any medium) into storage for use by that Production Device in that period.

#### E.5 Energy Carrier Conversion

This section demonstrates compliance with the following EECS Rules:

C3.2.2	C3.5.4(u)	C3.6	
--------	-----------	------	--

Not applicable.

#### E.6 Combustion Fuel (e.g., Biomass) Input and Production Devices with multiple energy inputs

This section demonstrates compliance with the following EECS Rules:



N6.3.2	O6.3.2		
--------	--------	--	--

Not applicable.

## E.7 Format

This section demonstrates compliance with the following EECS Rules:

<b>C3.5.4</b>	C3.5.5	N6.5	N6.6	
	<b>C3.4.4</b>	<b>E3.3.10</b>	N3.1.1	

E.7.1 EECS Certificates shall be Issued in such format as may be determined by AIB.

## E.8 Transferring EECS Certificates

This section demonstrates compliance with the following EECS Rules:

<b>C5.1.1</b>	<b>C5.1.3</b>	<b>C5.1.6</b>	
---------------	---------------	---------------	--

E.8.1 CREG shall only accept a Transfer Request from the duly authorized personnel of an Account Holder (or of a trading exchange duly authorized by the Account Holder) with respect to an EECS Certificate held on that Account Holder's Transferables Account on the Registration Database.

E.8.2 Where CREG receives a Transfer Request with respect to one or more GOs held in a Transferables Account on its EECS Registration Database, CREG shall, having confirmed that the Transfer Request is valid:

- a) remove from that Transferables Account the details of the EECS Certificate(s) specified in the Transfer Request;
- b) where the Transferee's Transferables Account specified in the Transfer Request is in its own EECS Registration Database:
  - i. includes the full details of the EECS Certificate(s) referred to in Section (a) above in the Transferee's Transferables Account;
  - ii. confirm, to the Transferor, the identity of the EECS Certificates so transferred by reference to their unique identifying number(s) and Face Values; and
  - iii. confirm, to the Transferee, the identity of the Transferor and of the EECS Certificates so transferred by reference to their unique identifying number and Face Values; and
- c) where the Transferee's Transferables Account specified in the Transfer Request is on another Member's EECS Registration Database:
  - i. notify that other Member of that Transfer Request;
  - ii. send the full details of the EECS Certificates referred to at Section (a) above to that other Member's EECS Registration Database in accordance with the

provisions of the Subsidiary Document “HubCom”. These details are preferably sent via the Hub;

- iii. record on its own EECS Registration Database, the export of such EECS Certificates; and
- iv. on receipt of confirmation from that other Member, which, as the case may be, may come from either the Hub or from that other Member directly, that the transfer has been completed, confirm to the Transferor of the identity of that other Member’s EECS Registration Database and of the EECS Certificates so transferred by reference to their unique identifying numbers and Face Values.

E.8.3 Where CREG is notified by another Scheme Member of a Transfer Request, which, as the case may be, may come from either the Hub or from that other Member directly, and pursuant thereto receives details of a RES-E GO with the account number for a Transferables Account on its own EECS Registration Database, it shall:

- a) insert the full details of that Scheme Certificate in that Transferables Account;
- b) confirm to the Member that notified it of such Transfer Request that the transfer of that Scheme Certificate has been completed. Such confirmation should be sent via the Hub when appropriate; and
- c) confirm, to the Transferee, that such Scheme Certificate has been transferred by reference to its unique identifying number and Face Value.

Scheme Certificates that are not RES-E GOs, are not eligible for transfer into an Account on the CREG Registry.

The Account Holder of an Account in relation to which a Transfer Request is made shall be obliged to retain all records to which they have had access relating to any GO which is the subject of a Transfer Request, for not less than 10 years after the Cancellation of such GO.

## E.9 Administration of Malfunctions, Corrections and Errors

This section demonstrates compliance with the following EECS Rules:

C5.1.7	C8.4.1	C8.4.2	C8.4.3	C8.5.1
D9.1.2				

E.9.1 Once issued, the details of an EECS Certificate cannot be altered or deleted except to correct an error.

E.9.2 Where CREG is notified by another Scheme Member of a Transfer Request, which, as the case may be, may come from either the Hub or from that other Member directly, and pursuant thereto receives an account number which does not correspond with an account number for a Transferables Account on its own EECS Registration Database each such Member shall use reasonable endeavours to exchange information such the correct account number can be identified, failing which:

- a) the full details of the EECS Certificate shall be re-entered into the Transferor’s Transferables Account on the relevant EECS Registration Database and that EECS Registration

Database shall be amended so that the EECS Certificate is no longer recorded as having been exported; and

b) all details of the EECS Certificate shall be removed from the other EECS Registration Database.

E.9.3 Where an error is introduced (subsequent to its Issue) into, or with respect to, an EECS Certificate held in an Account Holder’s Transferables Account in CREG’s Registration Database:

a) in the course of its Transfer into that Account; or

b) during such time as it is in such Account, CREG shall correct the error in or with respect to that EECS Certificate and any errors replicated in EECS Certificates split from it, provided that such EECS Certificate(s) have not been transferred out of that Transferables Account.

E.9.4 CREG may alter an EECS Certificate held in its EECS Registration Database so as to rectify an error which occurred prior to its transfer into the Account in which it is held at such time, provided:

a) the Account Holder has agreed to such alteration;

b) it is reasonably satisfied that any unjust enrichment of an EECS Market Participant as a consequence of such error has, to the extent reasonably practicable, been nullified; and

c) it is reasonably satisfied that the alteration itself does not give rise to undue enrichment of the Account Holder.

E.9.5 CREG shall not unduly alter the details of any EECS Certificate (save with respect to the Account in which it is held) or delete any EECS Certificate once it has been Issued save as provided by Section C.8.4. of the EECS Rules.

E.9.6 If it transpires that the data in any GO issued by CREG is inaccurate (whether or not through an act or omission of the Registrant of the Originating Production Device), CREG shall:

a) be entitled to Withdraw that EECS Certificate from where it is, at the time of such Withdrawal, in the Transferables Account of that Registrant; and

b) be entitled to recover the cost of securing the agreement of another Account Holder to the Withdrawal of Certificates of the same type from that other Account Holder’s Transferables Account, where the EECS Certificate is not in the Transferables Account of that Registrant, so that, as far as reasonably practicable, EECS Certificates are withdrawn with a Face Value and a financial value which make good the discrepancy.

## E.10 End of Life of EECS Certificates – Cancellation

This section demonstrates compliance with the following EECS Rules:

<b>C5.2.3</b>	<b>C6.1.1</b>	<b>C7.1.1</b>	<b>C7.2.1</b>	<b>C7.2.2</b>
<b>C7.2.3</b>	<b>C7.3.1</b>	<b>E3.3.10</b>	<b>N3.1.1</b>	

E.10.1 Cancellation is removing a Certificate from circulation. Once Cancelled, a Certificate cannot be moved to any other account, and so is no longer tradable.

- 
- E.10.2 The transfer of an EECS Certificate which has been cancelled, shall not be permitted. Their status within CREG's registry will be set as cancelled, which prevents any other activity to these GOs. CREG will send a confirmation of the cancellation to the Account Holder. Cancelled GOs no longer reside in the account of that or any other Account Holder.
- E.10.3 An EECS Certificate shall cease to be valid when:
- a) it is Cancelled in accordance with a valid Cancellation request made in accordance with Section E.10.4 below;
  - b) it is withdrawn in accordance with Section E.12 below;
  - c) its validity Expires in the manner and time set out in Section E.11 below.
- E.10.4 No cancellation of any EECS certificate held in CREG's Registration Database shall be allowed for use in the Belgian Federal Domain or in any country or region which is not a Domain. CREG may cancel GOs solely for use in a Domain (in relation to an EECS Product) of another Scheme Member, provided:
- a) it is not possible to transfer the GOs directly or via the Hub to a Scheme Member for the other Domain; and
  - b) a Cancellation Agreement exists between the Cancelling Scheme Member and the Scheme Member for the other Domain; and
  - c) such Cancellation Agreement requires:
    - i. the provision by the Cancelling Scheme Member to the Scheme Member for the other Domain of statistical information concerning Cancelled GOs; and
    - ii. the inclusion on any related Cancellation Statement of the identity of the Domain, Account Holder and purpose for which the EECS Certificates were Cancelled.
- Cancellation Requests shall be made by the duly authorised personnel of an Account Holder and contain the following information:
- a) The Account Holder requesting Cancellation of the EECS Certificates;
  - b) The relevant Production Device identity(s) or category(ies);
  - c) The relevant number of GOs associated with each Production Device or category listed in Section (b) above to be Cancelled;
  - d) The relevant production period(s);
  - e) The usage into which this Cancellation falls, where this may be – without prejudice to the Cancellation Agreement – one of:
    - i. Support, where the certificate is being Cancelled in order to receive financial support;
    - ii. Disclosure, where the certificate is being Cancelled under a labelling scheme or as proof of supply to consumers or for own use, and has not been used in order to receive financial support; or
    - iii. Other, for any other purpose.

The possible usages for Cancellation under each EECS Scheme are set out in the Section of PART IV of the EECS Rules establishing that EECS Scheme;

- f) The beneficiaries of the Cancellation, being:
  - i. The type of beneficiary, being either “energy supplier” or “end-consumer”;
  - ii. Where the beneficiary is an energy supplier, the identity of the energy supplier and of the end-consumer or end-consumer group; or where the beneficiary is an end-consumer, the identity of the end-consumer or end-consumer group;
  - iii. Location and country of end-consumer or end-consumer group;
  - iv. Where relevant, and at the discretion of the Scheme Member, the brand name of the product associated with this Cancellation; and
- g) The period during which the associated energy has been or will be consumed.

E.10.5 Where CREG receives a Cancellation Request from an Account Holder (which may or may not be a Cancelling Body) to Cancel a GO held in that Account Holder’s Account on CREG’s Registration Database, CREG shall mark that EECS certificate as having been cancelled. CREG shall provide the Account Holder with access to the full details of that GO certifying that it has been Cancelled and provide details of the Cancelled EECS Certificate to the Cancelling Body and its auditors were requested to do so and, where relevant and where one has been appointed for a Domain, the Competent Authority for that Domain and the relevant Product.

CREG shall not Cancel any Scheme Certificates pertaining to an EECS Scheme of which it is not a Scheme Member.

Cancellation is removing a Certificate from circulation. Once Cancelled, a Certificate cannot be moved to any other account, and so is no longer tradable.

### E.11 End of Life of EECS Certificates – Expiry

This section demonstrates compliance with the following EECS Rules:

<b>C5.2.3</b>	<b>C6.1.1c</b>	<b>E6.2.1h</b>	
---------------	----------------	----------------	--

- E.11.1 EECS Certificate expire twelve months after the end of the production month of the energy unit concerned.
- E.11.2 GOs which have expired, are no longer valid for transfer. Their status within CREG’s registry will be automatically set as expired, which prevents any other activity on these GOs. CREG will send a confirmation of the expiry to the Account Holder (statement of account). Expired GO no longer reside in the account of that or any other Account Holder.
- E.11.3 An EECS Certificate on the Registration Database of CREG shall cease to be valid when its validity Expires in the manner and time set out in the GO Decree.

### E.12 End of Life of EECS Certificates – Withdrawal

This section must demonstrate compliance with the following EECS Rules:

<b>C5.2.3</b>	<b>C6.1.1</b>	<b>C8.2.1</b>	
---------------	---------------	---------------	--

E.12.1 CREG may Withdraw GOs held in a Transferables Account on its EECS Registration Database at the request of the Account Holder of that Account, or otherwise in accordance with the provisions of the GO Decree and this Domain Protocol.

E.12.2 GOs which have been withdrawn, are no longer valid for transfer. Their status within CREG's registry will be adjusted accordingly.

An EECS Certificate on the Registration Database of CREG shall cease to be valid when it is withdrawn in the manner and time set out in the GO Decree and in this Domain Protocol.

## F ISSUER'S AGENTS

### F.1 Production Auditor

This section must demonstrate compliance with the following EECS Rules:

None directly			
---------------	--	--	--

The Production Auditors are accredited by the Economic Ministry. They verify the Production Devices upon start-up or modification, and also annually.

### F.2 Production Registrar

This section must demonstrate compliance with the following EECS Rules:

None directly			
---------------	--	--	--

Not applicable.

### F.3 Measurement Body(/ies)

This section demonstrates compliance with the following EECS Rules:

H			
---	--	--	--

The measurement bodies are the TSO and DSOs. They measure the production injected on land which qualifies for GO issuance.

---

## G ACTIVITY REPORTING

### G.1 Public Reports

This section demonstrates compliance with the following EECS Rules:

E3.3.4	HPA section 14.2		
--------	------------------	--	--

G.1.1 CREG shall by the 22nd of every month make available to the Secretary General the number of Scheme Certificates with respect to each EECS Product and each of its Domains and for each month, which, within the preceding twenty-five calendar months:

- it has Issued;
- (where relevant) have been transferred within its EECS Registration Database from Accounts associated with any Domain in one country to Accounts associated with a Domain in another country held on the same EECS Registration Database;
- have been transferred into its EECS Registration Database from EECS Registration Databases of other Members;
- have been transferred from its EECS Registration Database to EECS Registration Databases of other Members;
- it has Cancelled; and
- which have Expired.

### G.2 Record Retention

This section demonstrates compliance with the following EECS Rules:

A12.1.1	C5.1.2	D8.1.2	
---------	--------	--------	--

Records which are sufficient to enable resolution of disputes relating to such matters as ownership of and eligibility for EECS Certificates shall be kept of all material communications between Members and EECS Market Participants regarding the registration of Production Devices and the Issue, transfer and Cancellation of EECS Certificates.

CREG shall retain all records to which it has had access relating to any EECS Certificate on its EECS Registration Database which is the subject of a Transfer Request for no less than 10 years after its Cancellation or Expiry.

### G.3 Orderly Market Reporting

This section demonstrates compliance with the following EECS Rules:

E4.2.5	E4.2.6	E4.2.7	
--------	--------	--------	--

---

CREG shall report failures by EECS Market Participants to comply with the provisions of Product Rules to the Competent Authorities in relation to such matters. Such failures shall include behaviour by EECS Market Participants of which the Authorised Issuing Body is aware and which, in its reasonable opinion, amounts to a breach of Competition Law, or applicable law governing the conduct of financial markets.

CREG shall notify the AIB of any report made by it under the previous paragraph and shall provide the AIB with as much information in relation to such report as is consistent with any duty of confidentiality it may have.

Where CREG determines that an EECS Market Participant is in breach of the Product Rules or determines that a Production Device does not meet PD Qualification Criteria for an EECS Product in relation to which it is registered, it shall:

- take such action as is necessary to secure that it is compliant with Section E3.3.9(b) of the EECS Rules, such action to include, in a case of material noncompliance by the Registrant, the withdrawal of registration of the relevant Production Device for the purposes of that EECS Product; and
- notify the AIB of such a breach where CREG is of the reasonable opinion that such a breach could affect the transfer of EECS Certificates out of its EECS Registration Database into the EECS Registration Database of another Member.



## H ASSOCIATION OF ISSUING BODIES

### H.1 Membership

This section demonstrates compliance with the following EECS Rules:

<b>C2.2.6</b>	<b>C2.2.7</b>		
---------------	---------------	--	--

- H.1.1 The Association of Issuing Bodies brings together the issuing bodies of European energy certificate schemes. The AIB promotes the use of a standardised system, based on a harmonised environment, structures and procedures in order to ensure the reliable operation of European energy certificate systems. With its independent and peer reviews, and its periodic audits, the AIB provides a robust framework for reliable and fraud-resistant GO systems. Among others, it can also act by suspending transfers through the Hub. Membership of AIB facilitates mutual recognition of GOs across Europe.
- H.1.2 In case CREG ceases to be a Scheme Member of an EECS Scheme, it shall revise its EECS Registration Database so that every Production Device registered therein ceases to be registered for the purposes of EECS. Certificate issuing under EECS would stop, and EECS GOs would remain tradable only until Expiry.
- H.1.3 In case CREG ceases to be the Authorised Issuing Body for EECS Certificates, it shall revise its EECS Registration Database so that each Production Device in the Domain ceases to be registered for the purposes of EECS Certificates, it shall stop issuing EECS GOs and after a transitional period the registry shall be taken offline.

### H.2 Complaints to the AIB

This section must demonstrate compliance with the following EECS Rules:

None directly	<b>(J1.1.2)</b>		
---------------	-----------------	--	--

- H.2.1 An Account Holder is allowed to notify the Secretary General of AIB in writing in case:
- a) an Authorised Issuing Body in relation to an EECS Certificate is in breach of any of the provisions of Product Rules in relation to EECS Certificate; or
  - b) any Product Rules do not comply with the relevant provisions of the EECS Rules, and evidence is provided substantiating such allegation, and that the Authorised Issuing Body has been given adequate opportunity to respond to such allegation.
- The General Secretary of AIB shall invite the relevant Authorised Issuing Body to respond to the allegation.

---

## I CHANGE CONTROL

### I.1 Complaints to CREG

This section must demonstrate compliance with the following EECS Rules:

None directly			
---------------	--	--	--

Where an Account Holder finds that the rules of this Domain Protocol have not been complied with, it may submit a complaint to the CREG according to its dispute resolution procedure.

### I.2 Disputes

This section must demonstrate compliance with the following EECS Rules:

None directly			
---------------	--	--	--

Each person affected by a decision of CREG within the framework of this Domain Protocol, may request it to re-examine its decision according to the procedure set out in Article 28 of the Electricity Act.

### I.3 Change Requests

This section demonstrates compliance with the following EECS Rules:

<b>E4.2.3</b>	<b>E6.2.1e</b>	<b>L5.1.1</b>	
---------------	----------------	---------------	--

Account Holders may apply for changes to this Domain Protocols. No change affecting the EECS Rules shall take effect without prior approval of the Assessment Panel of AIB and the prior consent of its General Meeting.

## ANNEX 1 CONTACTS LIST

### AUTHORISED ISSUING BODY/REGISTRY OPERATOR

<b>Company name</b>	CREG
<b>Contact person</b>	Koen Locquet
<b>Department</b>	Administrative Directorate
<b>Address</b>	Nijverheidsstraat 26-38, 1040 Brussels, Belgium
<b>Phone number</b>	+3222897688
<b>E-mail address</b>	<a href="mailto:klo@creg.be">klo@creg.be</a>
<b>Website</b>	creg.be

### PRODUCTION AUDITORS

<b>Company name</b>	SGS Statutory Services Belgium (SGS SSB) vzw
<b>Contact person</b>	
<b>Department</b>	
<b>Address</b>	Internationalelaan 55 gebouw K – 1070 Anderlecht – Belgium
<b>Phone number</b>	
<b>E-mail address</b>	
<b>Website</b>	<a href="https://www.sgs.be">https://www.sgs.be</a>
<b>Company name</b>	Vinçotte vzw
<b>Contact person</b>	
<b>Department</b>	
<b>Address</b>	Jan Olieslagerslaan 35 – 1800 Vilvoorde – Belgium
<b>Phone number</b>	+3232218611
<b>E-mail address</b>	<a href="mailto:antwerpen@vincotte.be">antwerpen@vincotte.be</a>
<b>Website</b>	<a href="https://www.vincotte.be">https://www.vincotte.be</a>

### MEASUREMENT BODIES

<b>Company name</b>	Elia Transmission Belgium nv (TSO and DSO)
<b>Contact person</b>	
<b>Department</b>	
<b>Address</b>	Keizerslaan 20, 1000 Brussels - Belgium
<b>Phone number</b>	+3225467011
<b>E-mail address</b>	<a href="mailto:info@elia.be">info@elia.be</a>
<b>Website</b>	elia.be



---

## ANNEX 2 ACCOUNT APPLICATION/AMENDMENT FORM

[https://www.creg.be/sites/default/files/assets/Forms/GO/registratieformuliergarantiesvanooorspron  
g.pdf](https://www.creg.be/sites/default/files/assets/Forms/GO/registratieformuliergarantiesvanooorspron<br/>g.pdf)



---

**ANNEX 3 DEVICE REGISTRATION FORM**

See annex 2



---

**ANNEX 4 PRODUCTION/CONSUMPTION DECLARATION**

<https://www.creg.be/sites/default/files/assets/Forms/GO/aanvraagformulieruitreiking.docx>

ANNEX 5 EECS CANCELLATION STATEMENT

**EX DOMAIN CANCELLATION STATEMENT**

Declaration of cancellation of guarantees of origin for use in a Domain outside of Belgium (Federal).

This document is intended to declare the beneficiary and details of the cancellation of guarantees of origin (GOs) following the below designation. CREG confirms that the amount of electricity in accordance with the below-mentioned guarantees of origin in Flanders has not been sold as electricity from Renewable Energy Sources other than by use of this document.

The mentioned guarantees of origin are no longer tradable. The attributes in this document can only be claimed by the party mentioned in it, with regard to the specifications mentioned below.

This cancellation statement and the environmental attributes associated with the submitted guarantees of origin may not be transferred to a party other than the one listed as beneficiary on this statement.

1. Sending account holder information	
Account holder name:	
Account number:	
Date of producing the cancellation statement:	

2. Beneficiary information	
Beneficiary name:	
Beneficiary type:	



Purpose of cancellation:	
Domain of consumption:	
Category of use:	
Consumption period to which the GOs are designated (from-until):	

3. Subject	
Quantity of GOs:	
Number of GOs	
Energy type	
Type of Certificate	
First EAN	
Last EAN	
Domain of Issuance	
Dat of Issuance	
Production device (PD)	
Capacity	
Commissioning date of PD	
Start date of production period	
End date of production period	
Date of cancellation	
Technology	

#### 4. Declaration and signature

*CREG confirms that for the applicable quantity of electricity Guarantees of Origin were issued only once and from this day on can only be represented by this document.*

Place:

Name:

Signature: