



EECS Domain Protocol

**for
Spain**

Prepared by CNMC

Based on EECS Rules Release 7 v14

Release 9 2023

INTERNA



EECS Domain Protocol

Document Control

Version	Date	Originator	Reviewers
1	31/07/2015	J.M. Unsiön	
2	06/10/2015	J.M. Unsiön	
3	11/12/2015	J.M. Unsiön	
4	21/01/2016	J.M. Unsiön	
5	22/01/2016	J.M. Unsiön	
6	12/02/2016	J.M. Unsiön	
7	18/02/2016	J.M. Unsiön	
8	07/05/2017	J.M. Unsiön	
9	21/06/2022	J.M. Unsiön	PY Cornélis

Version	Approver	Date	Responsibility
1			

Change History

Version	Description
1	First draft
2	Changes in accordance with Review report. Version1, received 14 of September 2015
3	Changes in accordance with Review report received 16 th of October 2015
4	Changes in accordance with Review report received 15 th of January 2016
5	Changes in accordance with Review report received 21 st of January 2016
6	Changes in accordance with Review report received 4 th of February 2016
7	Changes in accordance with Review procedure of 17 th of January 2017
8	Changes in accordance with Review report received the 11 th of April 2017
9	Changes in accordance with information update, new regulation, 2022 Audit and new template



EECS Domain Protocol

Contents

A	Introduction	5
B	General	5
B.1	Scope	5
B.2	Status and Interpretation.....	6
B.3	Roles and Responsibilities	6
B.4	Issuance scope summary	8
C	Overview of National Legal and Regulatory Framework	10
C.1	The EECS Framework	10
C.2	National Energy Source Disclosure	11
C.3	National Public Support Schemes	13
C.4	EECS Product Rules.....	14
C.5	Local Deviations from the EECS Rules	14
D	Registration.....	16
D.1	Registration of an Account Holder	16
D.2	Resignation of an Account Holder	17
D.3	Registration of a Production Device.....	17
D.4	De-Registration of a Production Device.....	20
D.5	Maintenance of Production Device Registration Data	21
D.6	Audit of Registered Production Devices	21
D.7	Registration error/Exception Handling	23
E	Certificate Systems Administration.....	24
E.1	Issuing EECS Certificates	24
E.2	Processes	25
E.3	Measurement	30
E.4	Energy Storage (Including Pumped Storage)	30
E.5	Combustion Fuels (e.g. Biomass) and Production Devices with multiple energy inputs....	31
E.6	Format.....	31
E.7	Transferring EECS Certificates.....	31
E.8	Administration of Malfunctions, Corrections and Errors.....	32
E.9	End of Life of EECS Certificates – Cancellation	33
E.10	End of Life of EECS Certificates – Expiry.....	34
E.11	End of Life of EECS Certificates – Withdrawal	35
F	Issuer's Agents	36
F.1	Production Auditor	36



EECS Domain Protocol

F.2	Production Registrar	36
F.3	Measurement Body(/ies).....	36
G	Activity Reporting	37
G.1	Public Reports	37
G.2	Record Retention	37
G.3	Orderly Market Reporting.....	37
H	Association of Issuing Bodies	38
H.1	Membership	38
H.2	Complaints to the AIB	38
I	Change Control.....	38
I.1	Complaints to CNMC	38
I.2	Disputes	39
I.3	Change Requests	39
Annex 1:	Contacts List	40
Annex 2:	Production Device Owner Application Form.....	42
Annex 3:	Device Registration Form	43
Annex 4:	Production/Consumption Declaration	44
Annex 5:	EECS Electricity Cancellation Statement	46
Annex 6:	Application Form for Production Device De-Registration	47
Annex 7:	Application Form for Production Device Changes.....	48



EECS Domain Protocol

A Introduction

This Domain Protocol describes how the EECS Standard has been implemented in a certain Domain (country/region) for a certain type of energy certificate and it indicates where that system deviates from that standard. The EECS framework including the Domain Protocol aims to ensure robustness and transparency for all parties involved .

A Domain Protocol promotes quality and clarity, as it:

- explains local rules;
- provides clear information to all stakeholders (consumers, market parties, other members, government, the EU Commission etc.);
- facilitates assessment of compliance and permissible deviation from the EECS Rules;
- facilitates audit; and
- translates local rules into a single format and language, supporting each of the above.

Important contact information is provided in Annex 1.

B General

B.1 Scope

This section demonstrates compliance with the following EECS Rules:

C3.1.1	E6.2.1a	E6.3.1	E6.3.2	N2.1.1	O.2.1.1	
--------	---------	--------	--------	--------	---------	--

B.1.1. This Domain Protocol sets out the procedures, rights and obligations, which apply to the Domain of Spain and relate to the EECS Electricity Scheme as defined in the EECS Rules.

B.1.2. Production Device qualification for this Domain will be determined such that, the Production Device is effectively located in Spain.

The borders of the Domain are determined as Spanish borders. No Production devices located at the border of the Domain.

B.1.3. CNMC –Spanish National Markets and Competition Commission (Comisión Nacional de los Mercados y la Competencia) – is authorised to Issue EECS Certificates relating to the following EECS Product(s):

- EECS GO (Guarantees of Origin – Hereinafter “GOs”)

See section 3 for Law references



EECS Domain Protocol

B.1.4. CNMC is authorised to Issue EECS Certificates relating to the following EECS Product Types:

- Electricity from renewable sources Guarantee of Origin
- Electricity from High-Efficiency Cogeneration Guarantee of Origin in accordance with EU Directive 2012/27/EU

B.1.5. CNMC is authorised to Issue EECS Certificates relating to the following Energy Carriers: Electricity, and the following energy sources: Renewable including biomass and High-Efficiency Cogeneration.

B.1.6. CNMC is authorised to Issue the following types of energy certificates outside of the EECS Framework: National GOs

- All parts of this Domain Protocol also apply for National GOs.

B.2 Status and Interpretation

This section demonstrates compliance with the following EECS Rules:

E6.2.1d	E6.3.1	E6.3.4				
---------	--------	--------	--	--	--	--

B.2.1. The EECS Rules are subsidiary and supplementary to national legislation.

B.2.2. The EECS Rules and its subsidiary documents are implemented in Spain in the manner described in this Domain Protocol. Any deviations from the provisions of the EECS Rules that may have material effect are set out in section C.5 of this document.

B.2.3. The capitalised terms used in this Domain Protocol shall have the meanings ascribed to them in the [EECS Rules](#) except as stated in section C.5 of this document.

B.2.4. This Domain Protocol is made contractually binding between any EECS Participant and CNMC by agreement in the form of the Standard Terms and Conditions.

B.2.5. In the event of a dispute, the approved English version of this Domain Protocol will take precedence over a local language version.

B.3 Roles and Responsibilities

This section demonstrates compliance with the following EECS Rules:

C3.1.1	E6.2.1c					
--------	---------	--	--	--	--	--



EECS Domain Protocol

B.3.1. The Authorised Issuing Body for GOs in Spain is CNMC . Its role is to administer the EECS Registration Database and its interface with the EECS Transfer System.

CNMC is:

- National Regulatory Authority for Spain,
- Official issuing body for the electricity Guarantee of Origin system. CNMC can outsource administrative tasks to a Registry Operator but the responsibility remains with CNMC,
- Responsible for the National Electricity Source Disclosure system,
- Responsible for Audits and inspection of renewable and CHP electric production devices,
- Responsible for RES support schemes settlement and payment system,
- Production Registrar, but operation is outsourced to the Registry Operator appointed by CNMC, currently VECTOR ITC GROUP

Every 2 years CNMC set a tender to outsource administrative operations and IT developments to operate the registration database. The 2 years contract may be extended for 2 additional years if there is agreement between CNMC and the Registry Operator.

In this tender there are requirements about operational reliability, as fulfilment of Certification ISO 20.000 for IT management, Certification ISO 27.001 for IT security, Capability Maturity Model Integration (CMMI) level 3, etc.

VECTOR ITC GROUP is currently the company managing administrative operation of the registry (Registry Operator).

Between 2007 and 2012 the Registry Operator was INDRA Sistemas, S.A., between 2012 and 2017 the Registry Operator was ITCONIC,S.A. and from October 2018 till now is VECTOR ITC GROUP

B.3.2. The Competent Authority for GOs in Spain is CNMC. Its role is defined by legislation to be responsible for the operation of GOs in Spain.

B.3.3. The Authorised Measurement Bodies are the TSO and DSOs (333 DSO in January 2022), established under national regulation to be responsible for the collection and validation of measured volumes of energy used in national financial settlement processes. More information in Section 3 and Annex 1

B.3.4. Contact details for the principal roles and Issuing Body agents are given in Annex 1.

B.3.5. The EECS Registration Database is under the responsibility of CNMC and is operated by VECTOR ITC GROUP.



EECS Domain Protocol

B.3.6. There are no Non-Governmental Certificates .

B.3.7. There are no other Independent Criteria Scheme combinations can be Issued under this Domain Protocol:

B.3.8. There are no Other Issuing Bodies in this Domain. The process for avoiding double issuing of certificates that can be used for the same purpose to the same amount of energy is the sole existence of one only Issuing body and one and only System.

B.4 Issuance scope summary

B.4.1. In summary, CNMC is authorised to Issue the following types of energy certificates:

Issuing Body issues certificates for:		Electricity		
		ProductType	Source	Technology (= High-Efficiency Cogeneration)
EECS GO	Energy source	Hydro	X	
		Solar	X	
		Wind	X	
		Biomass	X	
		Geothermal	X	
		Landfill & sewage treatment plant gas	X	
		Tidal/wave/other ocean energy	X	
		Ambient energy		
		Fossil	X	Only High Efficiency Cogeneration
		Nuclear	N/A	
National GO (non-EECS*)		Same technologies as EECS GO		
EECS Support Certificate				
EECS NGC (name)				
National certificate other than GO (non-EECS*)				

Issuing Body issues certificates for:		Gas		
		Type Of Gas		
EECS GO	Energy source			



EECS Domain Protocol

National GO (non-EECS*)					
EECS Support Certificate					
EECS NGC (name)					
National certificate other than GO (non-EECS*)					

(*) Non-EECS certificates may not be transferred over the AIB hub.



EECS Domain Protocol

C Overview of National Legal and Regulatory Framework

C.1 The EECS Framework

This section demonstrates compliance with the following EECS Rules:

D3.1.2	E6.2.1b	E6.2.1d	N8	O.10		
--------	---------	---------	----	------	--	--

C.1.1. For this Domain, the relevant local enabling legislation is as follows:

-Orden ITC/1522/2007, de 24 de mayo, por la que se establece la regulación de la garantía del origen de la electricidad procedente de fuentes de energía renovables y de cogeneración de alta eficiencia. (consolidated version after May 2015)

<https://www.boe.es/buscar/act.php?id=BOE-A-2007-10868>

This Order has the purpose of regulating the GO system (Art. 1), setting:

The scope of application (Art. 2), definitions (Art. 3), CNMC as issuing body - (Art.5), issuing (Art 9), transfer (Art. 10), imports and exports (Art. 11), cancellation (Art.12), verification and inspection of Product devices (Art 13).

-Circular 1/2018, de 18 de abril, de la Comisión Nacional de los Mercados y la Competencia, por la que se regula la gestión del sistema de garantía de origen de la electricidad procedente de fuentes de energía renovables y de cogeneración de alta eficiencia.

<https://www.boe.es/buscar/act.php?id=BOE-A-2018-5717#dd>

Note: "Circular" and "Orden" are parts of the legislative framework in Spain. The legislative hierarchy is

-Ley>Real Decreto>Orden>Circular>Resolución

(Law>Royal Decree>Order>Circular>Resolution)

This Circular regulates many details of the GO System, setting aspects as:

Definitions (art. Segundo), issuing requests (art. Quinto), transfer (art. Séptimo), imports (art. Octavo) exports (art. Noveno), redemption (art.Décimo), voluntary withdrawal (art. Décimotercero), mistakes corrections (art. Decimocuarto), deadlines for requests and operations (art. Decimoquinto).

C.1.2. CNMC has been properly appointed as an Authorised Issuing Body for GOs:

-By Law, in Art. 7.23 of "Ley 3/2013, de 4 de junio, de creación de la Comisión Nacional de los Mercados y la Competencia".

<https://www.boe.es/buscar/act.php?id=BOE-A-2013-5940>



EECS Domain Protocol

C.1.3. By the time of the Issuing Request, Production device owner have to answer two questions: Exports (Yes=S, NO=N) and “AIB Export (Yes=S, NO=N). Only if the Owner marks “Yes” in the 2 cases, it is mandatory to get signed the STC (Standard Terms and Condition document). If any of the answers is “NO”, the STC is not a requirement and these GO could be not considered as EECS GO. This is the only difference as the Domain Protocol applies to all GOs issued in the Domain, irrespective if the GO will be transferred, redeemed or exported through AIB Hub.

Exportación (S/N)	N	Exportación AIB (S/N)	N
DATOS(S) DE LA(S) INSTALACION(ES)			
DNI/NIF/NIE Titular de la Instalación	Nombre y Apellidos/Razón Social Titular de la instalación	Nombre de la Instalación	

C.2 National Energy Source Disclosure

This section demonstrates compliance with the following EECS Rules:

E3.3.14						
---------	--	--	--	--	--	--

C.2.1. For this Domain, the authorised body for supervision of Disclosure of the origin of energy towards consumers is CNMC. This body is responsible for supervision of disclosure of the origin of the following Energy Carriers: Electricity.

C.2.2. There is only disclosure rule for all the Domain. CNMC is the responsible Body for the National Electricity source Disclosure system in the whole territory.

C.2.3. The relevant legislation for disclosure is

“Circular 2/2021, de 10 de febrero, de la Comisión Nacional de los Mercados y la Competencia, por la que se establece la metodología y condiciones del etiquetado de la electricidad para informar sobre el origen de la electricidad consumida y su impacto sobre el medio ambiente.”

<https://www.boe.es/buscar/act.php?id=BOE-A-2021-2570>

C.2.4. The methodology of the disclosure and residual mix calculation is as follows:

Legal document Circular 2/2021 establishes the procedure CNMC uses to calculate the Supplier Mix for all supplier companies, as well as the Final Residual Mix. This disclosure includes these technologies: renewable, High Efficiency Cogeneration, CCTG, Coal, Fuel oil, Nuclear, Other non-renewable sources. All calculations are according to RE-DISS II project methodology.

All supplier companies must specify information about their electricity disclosure (CO2 emissions, radioactive waste, technology mix) on the bills (mandatory)

- Circular 2/2021 describes the procedure of electricity data collecting to calculate the mix, sets the calculation procedure and establishes the format of electricity disclosure. Formula to calculate energy mix for disclosure is described in Circular 2/2021, Annex 1 “Método de cálculo de etiquetado de la electricidad”:

Annex I, point 1: In a first step, Preliminary Domestic Residual Mix, PDRM is calculated, in accordance to energy data received from TSO for each



EECS Domain Protocol

technology. For Preliminary Domestic Residual Mix calculation we consider the electricity generation, subtracting GOs issued and adding GOs expired.

Annex I, point 2: Then, Preliminary Domestic Residual Mix is rectified subtracting net exported electric energy to external countries and adding net imported electric energy from external countries to obtain the Domestic Residual Mix (DRM) for each technology. In Spain, external countries considered are Morocco and Andorra.

Annex I, point 3: We get Untracked Consumption (UC) as follows:

$$UC = \text{Electric energy consumption} - \text{Disclosed electric energy consumption}$$

Annex I, point 4: Finally, Final Residual Mix (FRM) is calculated in accordance with these two possibilities.

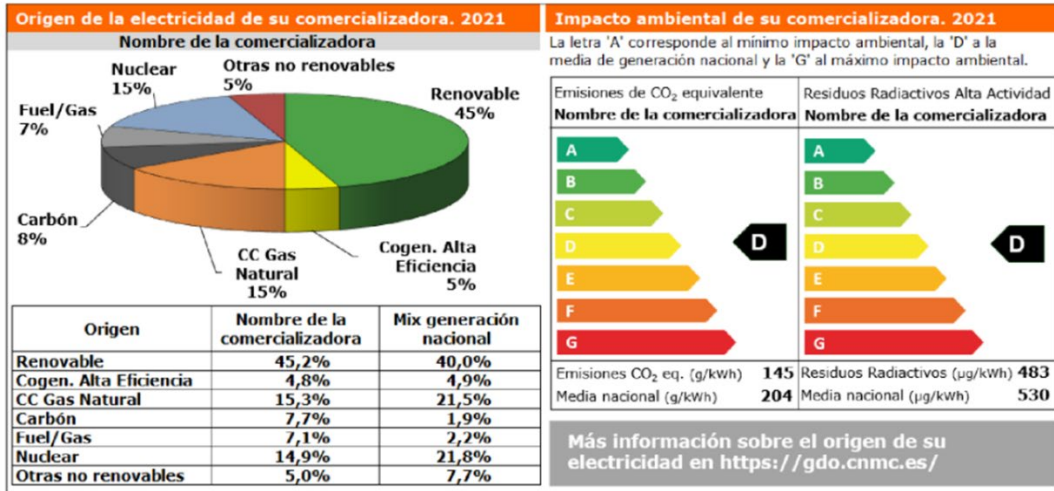
A) in case $\text{Untracked Consumption} \leq \text{Domestic Residual Mix}$, then Spanish Electric System has excess of attributes, and $\text{Final Residual Mix} = \text{Domestic Residual Mix}$

B) in case $\text{Untracked Consumption} > \text{Domestic Residual Mix}$, then Spanish Electric System has attribute deficit, and this deficit should be completed using the EAM (European Attribute Mix) so the $\text{Final Residual Mix} = \text{Domestic Residual Mix} + \text{European Attribute Mix}$.

In other sections of Annex I we calculate the mix of each electricity company, as well as its environmental impact (CO₂ and high-activity radioactive waste) and energy rating.

The format of the disclosure is regulated in the Resolución de 30 de noviembre de 2021, de la Comisión Nacional de los Mercados y la Competencia, sobre el formato del etiquetado de la electricidad

https://www.boe.es/diario_boe/txt.php?id=BOE-A-2021-20574



C.2.5. Cancellation for usage in another Domain (that is Ex Domain Cancellations or EDC) are currently not allowed.

C.2.6. Final results of the disclosure of electricity is available on the website (entering the year)

https://gdo.cnmec.es/CNE/resumenGdo.do?informe=etiquetado_electricidad

C.3 National Public Support Schemes

C.3.1. Since 2009, CNMC is the responsible body for support schemes settlement and payment System for renewable and CHP Production Devices.

CNMC RES support schemes settlement and payment System is regulated by Circular 1/2017, de 8 de febrero, de la Comisión Nacional de los Mercados y la Competencia:

<https://www.boe.es/buscar/act.php?id=BOE-A-2017-1881>

From June, 2014, a new support system based on investment return plus operation return according established standards by technology:

<https://www.boe.es/buscar/act.php?id=BOE-A-2014-6123>

GO system and CNMC payment system take all information from the same database system (called "SICILIA") which contains information about Production Devices and also information about energy generation, provided by Authorised



EECS Domain Protocol

Measurement Bodies. As more than 6.000 million € are paid every year, information in this database must be extremely accurate.

C.3.2. Interaction between support schemes and electricity disclosure:

According to Directives, in Spain, GOs have the sole function of proving to a final customer that a given share or quantity of energy was produced from renewable sources. All electricity from renewable sources and cogeneration can be disclosed to the customer, on a voluntary basis, irrespective of whether or not it has received support.

If any production device owner wants to export a Guarantee of Origin, the owner must waive the support received by the energy related.

In this regard, there are no restrictions for domestic transfers.

C.4 EECS Product Rules

This section demonstrates compliance with the following EECS Rules:

E6.2.1f	E6.2.1g					
---------	---------	--	--	--	--	--

C.4.1. The EECS Product Rules as applied in Spain are set out within sections D and E of this document.

The Guarantee of origin (GO) is the only EECS Product regulated in the Spanish legislation. In accordance to EU Directives and Spanish legislation, CNMC issues GOs for the purpose of disclosure of electricity and final consumer's transparency.

C.5 Local Deviations from the EECS Rules

This section identifies those areas where there are minor differences from the EECS Rules without impacting the integrity of EECS Certificates.

- C.5.1. EECS Rules C3.4.1 sets that, in case of monthly issuing, the issuing should occur within 1 month of production. Even though there is monthly issuing of GOs in Spain, deadlines for requests and issuing of GOs in Spain are longer than one month. (See Domain Protocol, section E.2).
- C.5.2. In accordance to EECS Rules C2.2.3, any Production device can be re-registered on the EECS Registration Database. In the Spanish GOs System, the registration of Production Devices does not expire till the Owners/Agents start the de-registration process (See Domain Protocol, section D.5.1. and D.4.)
- C.5.3. Expiry rules as explained in Domain Protocol, section E.2.3 are stricter than required in EECS Rules C3.4.4.
- C.5.4. As explained in this Domain Protocol section E.9.1 there are two ways of "Cancelación": Redemption or "assignment to the disclosure calculation of an electricity supplier". In the first case, there is something similar to a "cancellation statement" mentioned in EECS Rules C.7. But not in the second case.
- C.5.5. In accordance with Domain Protocol, section E.7, only electric energy suppliers can import GOs, and only production device owners can export GOs. As only GOs issued to domestic Production Devices "for export" can be exported, it is not



EECS Domain Protocol

possible to re-export an imported certificate. This is a stricter approach than EECS rules C.5. On the other hand, these rules make a GO Carousel impossible, so the system is resistant against VAT fraud.



D Registration

This section *demonstrates compliance with the following EECS Rules:*

G2.2.1						
--------	--	--	--	--	--	--

D.1 Registration of an Account Holder

As explained in C.3, GO system and RES support schemes settlement and payment System take information from the same database. So, the registration process for GO system and the settlement system are the same process. In accordance with Circular 1/2018, in Art. 4.5),

“Todas las instalaciones de generación que deseen participar en el Sistema de Garantía de Origen deberán estar dadas de alta en el Sistema de Liquidación del régimen retributivo específico de la CNMC aun cuando nunca hayan sido inscritas en el registro de régimen retributivo específico en estado de explotación, con excepción de las instalaciones de tecnología hidráulica de potencia instalada superior a 50 MW”.

Unofficial translation:

“All generation facilities wishing to participate in the Guarantee of Origin System shall be registered in the CNMC's Specific Remuneration System even if they have never been registered in the register of a specific remuneration regime in a state of operation, with the exception of hydraulic technology installations with installed power greater than 50 MW.”

Aforementioned hydro plants are in the registry with information provided by TSO.

D.1.1. Any Production Device owner, or any supplier company in the Spanish domain, can be an Account Holder.

CNMC publishes an official list of supplier companies in the Spanish domain:

<https://sede.cnmc.gob.es/listado/censo/2>

Registration of a Production Device (see Section D.3.) is the first step for registration of the Production Device Owner as Account Holder. Then, the participant must send ID Cards, Power of Attorney, etc, and must complete and send the “Owner Application form” (Annex 2) to the Registry Operator.

After verifying all documents, the Registry Operator updates the GO database and confirms registration by sending an email to the Agent.

D.1.2. The Production Device owners can nominate an Authorised Agent to operate on their behalf. When the account holder nominates an Authorised Agent, it is necessary to complete the “Authorised User Application Form” (see Annex 6). The agent should also send the next documents: identification cards, power of attorney



EECS Domain Protocol

to prove the representativeness of physical persons and companies on behalf of the electrical producers.

- D.1.3. The Registry Operator evaluates on behalf of the Issuing body whether all the documents required have been delivered or not. Some relevant aspects, such as notarial certificates, or previous resolutions not available by the authorities' organisations in Spain, are reasons to reject the request. If documents fulfil all requirements, the process takes from one to three days.
- D.1.4. If the registration is accepted by the Registry Operator, the database will be updated, and the Registry Operator will send the credentials to access to the GO System to the agent or Production Device owner via email.
- D.1.5. The first time that an account holder requests an export of GO, the Standard Terms & Conditions must be signed by clicking a box in the request.
- D.1.6. Participation in the GO system is free of charges for all Account Holders.
- D.1.7. As only GOS issued to domestic Production Devices "for export" can be exported, it is not possible to re-export an imported certificate. These rules make no possible the GO carousel, so the system is resistant against VAT fraud, and the Know your customer form is not included in the process.

D.2 Resignation of an Account Holder

De-registration of a Production Device (see section D.4) involves closing the associate Account. Once the process of De-registration of the Production Device is complete, it is not possible any kind of operation related to that Production Device.

Changes regarding ownership of the Production Device involve that the former owner will not have access to act on behalf of that Production Device anymore. Account history is available as it is on the public website.

D.3 Registration of a Production Device

This section demonstrates compliance with the following EECS Rules:

C2.1.1	C2.1.2	C2.2.4	D4.1.2	E3.3.11	N6.2.	O6.2
--------	--------	--------	--------	---------	-------	------

D.3.1. Application

Production Device Owners or Authorised Agents can register a Production Device in the System.

Documentation required for registration of production devices is described in the aforementioned "Circular 1/2017, de 8 de febrero, de la Comisión Nacional de los



EECS Domain Protocol

Mercados y la Competencia in the “Sexto” (Sixth) article. Some of the main requirements are:

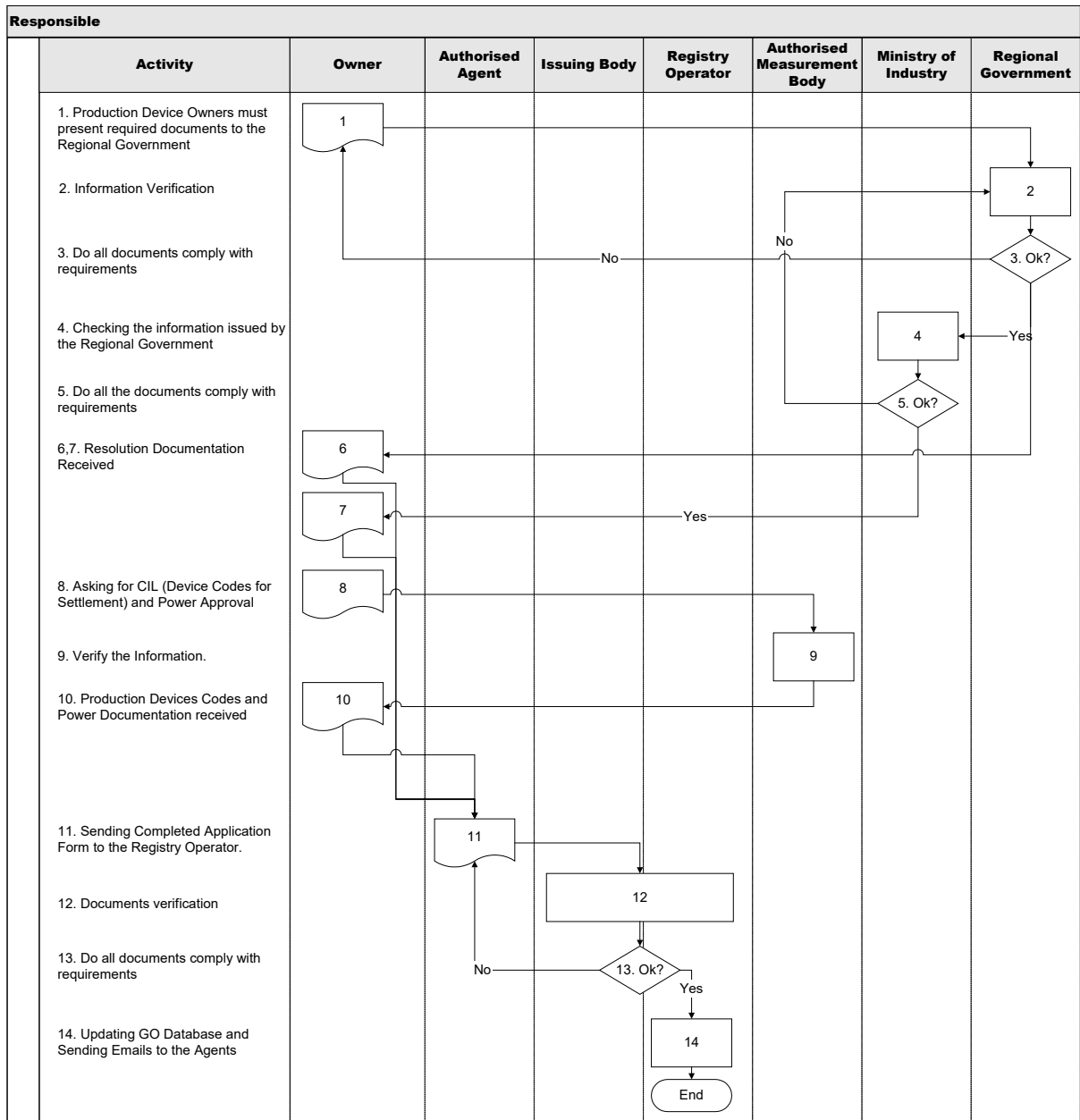
- Power of Attorney for the Authorised Agent.
- Definitive Start up Certificate of the Production Device. This Certificate is given by the Regional Government or Ministry.
- Resolution for definitive inscription in Regional Government or Ministry for production devices.
- Document with CIL code (Production Device Code for Settlement) given by the Authorised Measurement Body, in accordance with “Real Decreto 1110/2007, de 24 de agosto”
- Other data such as Bank Account numbers, address, contact person, email, etc.
- Any other necessary documents required in the Circular 1/2017, depending of the type of Production Device.

It is also necessary to complete the Application form (see Annex 3).

All Production Devices have a code in the System: (CIL code). Besides of that, the first time the Production Device owner requests any export of GOs, the Registry Operator will assign to the Production Device a unique additional code attending to the general criteria specified in the AIB-EECS-SD03 document. If there is no request to export GOs, no additional code is assigned.

Once, the Registry Operator has checked that all the required documents are in order, it proceeds to update the database, and gives some credentials to the Agent to work in the System. This could take from one to five days.

D.3.2. Process



Notes:

- Production Device owner must present these documents to the Regional Government:
 - Certificate of Incorporation for the company owner of the Production Device.
 - Power of Attorney issued by the company for the physical person.
 - Notarial Document to authorize a physical or legal person to act as an Agent.
 - Notarial power to recognize a person as an Agent by the legal representative company.



EECS Domain Protocol

2. The Regional Government (there are 17 Regional Governments in Spain) checks the documentation and requirements. If everything complies with legal requirements, they issue the Certificate for Production Devices start-up, and an Inscription Resolution in the Regional Government (Record 6 in the Flowchart above). They also send that information to the Ministry of Industry.
4. The Ministry of Industry checks that all the documents comply with legal regulations. If so, then they issue a resolution (called as RIPRE). (Record 7 in the Flowchart above).
8. The Owner of each Production Device asks for a CIL code (Production Device Code for Settlement) and Power documentation accreditation to the Authorised Measurement Body.
9. Each Authorised Measurement Body checks the information and issues a CIL code (Production Device Code for Settlement) for each Production Device. They certify the power of each Production Device as well.
11. The Authorised Agent submits the Application form and all documents required and described in this Domain Protocol, section D.3.1. Since 2012, all information and documents must be sent electronically to CNMC.
12. Each Agent asks for the Registry Operator to register each owner in the GO System. They send a completed application form, and the rest of the documents previously approved by the Regional Government. The Registry Operator and the Issuing Body check all the documentation. If all documents are correct, the Registry Operator updates the GO database and sends an email to the Agent.
13. The Registry Operator checks all the information and documents required. In case of any question about this process, the Registry Operator asks the Issuing Body about the way to go on with the process

D.4 De-Registration of a Production Device

Owners or Authorised Agents of a Production Device should send a completed online application form to the Registry Operator. (see Annex 7).

http://primaequivalente.cnmc.es/sgpecnePublica/inicio_public.do

(Clicking in “formularios/Baja de instalación”)

Prior to this, they must also fill out some forms of other authorities in Spain (Ministry of Industry, and Regional Government). These organisations send a resolution notification to the Owners/Agents.

After verification of all documents, the Registry Operator deregisters the Production Device in the database and notifies it to the Owners/Agents by email.

This takes from one to three days' time



EECS Domain Protocol

D.5 Maintenance of Production Device Registration Data

This section demonstrates compliance with the following EECS Rules:

C2.2.1	C2.2.2	C2.2.3	C2.2.5	D5.1.2		
--------	--------	--------	--------	--------	--	--

D.5.1. The registration of Production Devices does not expire in Spain till the Registry Operator receives a communication from the Owners/Agents. These changes must be notified by the Owners/Agents, by sending a complete Application Form (see Annex 8)

D.5.2. Changes of Production Device Registration Data must be notified by the owners/agents to the Registry Operator by the System. They must complete an Application Form (see Annex 8.) indicating any changes.

Prior to this, they must also fill out some forms, and send some required documents to other authorities in Spain (Ministry of Energy, and Regional Government). The Ministry send every month an update to the Registry information.

D.5.3. When owners/agents communicate changes in Device Capacity and Technology Type, they also have to send the resolution that was previously issued by the authorities in Spain (Ministry of energy, and Regional Government) for this Production Device to the Registry Operator. If the capacity of an existing Production Device increases, additional capacity may be registered in the Database as a separate element of that Production Device with the Capacity and date set in the aforementioned resolution.

D.6 Audit of Registered Production Devices

This section demonstrates compliance with the following EECS Rules:

E3.3.7	E3.3.8	D5.1.2				
--------	--------	--------	--	--	--	--

D.6.1. Regional Governments and the Ministry are responsible for issuing official documents (required in the GO registry), as “Certificate for the definitive Start up” , or “Resolution for definitive inscription in Regional Government or Ministry”, so Production Devices are audited in a first step by Public Authorities.

Furthermore, CNMC is responsible for audits of Production Devices, with an internal specific department (Inspections, settlement and clearance) to develop this task.

Some of the audits are carried out by an independent audit company subcontracted by CNMC, in order to cover a larger number of plants.

The CNMC analysts of this department are responsible for onsite inspections of Production Devices, checking technical data like metering schemes, administrative data like official documents, and economic data like support schemes received.

All High Efficiency Cogeneration must be audited every year by an entity recognised by the Competent Authority and submit a certificate assessing the efficiency of the cogeneration process.

D.6.2. Owners must permit access to Production Devices: In accordance to art.13.2, and 14 of the aforementioned “Orden ITC/1522/2007”: (Unofficial translation)

“Article 13. Verification and inspection of facilities.

2. The proprietors of facilities subject to this Order should provide appropriate conditions of physical access to their facilities for the performance of the tasks which relate to review, verification, and, where necessary, inspection.

Article 14. Regime of infringements and penalties.

Failure to comply with the obligations provided for in this order shall apply to the regime of infringements and sanctions provided for in Title X of Law 24/2013 of 26 December on the Electricity Sector.”

D.6.3. When the inspection detects differences between Production Device and the information in the Registry, there is a communication to the Ministry and the Registry is updated accordingly.

D.6.4. Every year there is a CNMC inspection plan (as an example, 2935 plants were included in the inspection plan for 2021.), which is a document that, on a yearly basis, set a general framework for the inspection function, covering following phases:

- Definition of the objectives of the inspection plan, according to the priorities identified and the resources available
- Selection of the power plants to be inspected, using different criteria (technology, size of the plant, random selection, etc.)

The inspection of the plant typically includes these steps:



The inspection visit has the objective to check the compliance of the plant with all the requirements established in legislation. These requests can be classified in:

- Administrative requirements, related to the administrative situation of the plants, such as the inscription in registries,



EECS Domain Protocol

- Technical requirements, related to the technical characteristics of the plants, such as aspects related to the technology, installed power or installed capacity, electrical protections.
- Measurement devices complying with the requirements in the regulatory framework.
- Economic requirements, related to the economic regime of the plant.

As a consequence of the final report, there could be sanctions and penalties for those plants that may have infringed the legislation. Furthermore, in cases of discrepancies detected in the inspection process, the registries are updated accordingly.

Aforementioned inspections items can confirm that the EECS Certificates are issued according to the amount of Output that qualifies for the Purpose of these EECS Certificates.

D.6.5. Inspections verify that the Measurement Devices are correctly positioned in order to measure the quantity needed for calculating the amount of EECS Certificates to be Issued.

Inspections confirm the accuracy of the Measurement Devices involved in the calculation of the amount of EECS Certificates to be Issued to be acceptable in accordance with the existing regulatory framework and applicable standards.

Inspections confirm that the formula for calculating the amount of EECS Certificates correctly reflects the amount of Output that qualifies for the Purpose of these EECS Certificates.

D.6.6. Refusal to permit access to a Production Device may be considered a breach of the Standard Terms and Conditions.

D.6.7. The period between inspections of a Production Device will not exceed 5 years.

D.7 Registration error/Exception Handling

This section demonstrates compliance with the following EECS Rules:

C2.2.2	E4.2.7					
--------	--------	--	--	--	--	--

D.7.1. Any errors in EECS Certificates resulting from an error in the registered data of a Production Device will be handled in accordance with section E.8.

When any mistake is identified, the Registry Operator proceeds to communicate it to the Account Holder/Authorised user, and the Ministry to correct it in their database. The Ministry sends every month an update to the Registry information.



EECS Domain Protocol

- D.7.2. If a participant is in breach of products rules or no longer meets the product devices' qualifications criteria, CNMC shall initiate withdrawal of registration in the GO System. CNMC will also notify AIB of such breach.
- D.7.3. If an inspection identifies material differences from the details recorded on the EECS Registration Database, the Registrant must re-apply for registration of the Production Device.

E Certificate Systems Administration

E.1 Issuing EECS Certificates

This section demonstrates compliance with the following EECS Rules:

A2.1.1	A2.1.2	C3.1.1	C3.2.1	C3.3.1	C3.4.2	C3.4.4
N3.1.1	O3.1.1					

E.1.1. The Guarantee of Origin System is the only official EECS product in Spain. Therefore, for the purpose of disclosure of electricity and final consumers' transparency, there is no possible interaction with other certificates. Alteration of GOs is not possible, since the whole system—and every single of their entries—is the responsibility of CNMC and no other bodies are involved.

E.1.2. Only Production Devices registered in the GO System are allowed to request for issuing GOs. If an output device is not in the registry, CNMC has no information of the plant or its metering, so it is impossible to issue any GOs.

E.1.3. The Production Device Qualification Criteria are defined in the Spanish regulatory framework:

Orden ITC/1522/2007, in the art. 2 prescribes that only electricity Production Devices from renewable energy and High efficiency cogeneration can participate in the GO System. As described in section D, Registration of Production Devices are under strong controls, like the requirement of an official Start Up Certification from the Regional Governments.

Only these Product Device owners or Authorised Agents can request for GOs issuing. As the GO System and RES support schemes settlement and payment System take all information from the same database system (called "SICILIA"), we have strict rules to manage the information about the Production device and also about energy generation. (See E.3 section: "Measurements").

All issuing requests are on a monthly basis, and deadlines are defined in E.2. section "Processes".

E.1.4. From 2007 up to December 2015 it was possible to request and issue GOs with 3 decimal numbers, but the Orden IET/931/2015 amended art 4.1:

«Las garantías de origen tendrán un formato normalizado de 1 MWh...»

Unofficial translation:

"Guarantees of Origin must have a standard format of 1 MWh..."

In accordance to the transitory provision of the Order, this change will enter into force for GOs issuing for energy generated after 1st of January 2016.



EECS Domain Protocol

E.1.5. Codification: The Orden ITC/1522/2007 was modified by Orden IET/931/2015, (DP, section C.1.2.). In the “Artículo único. Tres”, one of the amendments was that a “Guarantee of Origin will include a unique identification number.”

In accordance to the “Disposición transitoria unica” – Single transitional provision- this changes have entered into force for the GOs from energy generated after the 1st of January 2016.

E.1.6. One precondition for exports of GOs is in Article 11.2 of Orden ITC/1522/2007. In accordance to this article, when a GO is exported, the owner must waive the support scheme, before filing the issuing request. As the support scheme is limited in time, and GOs operations are on monthly basis, when support scheme is over in month “m”, it is possible to request issuing of GO for month “m+1” without any waiver.

(NOTE: So far, support schemes have had much higher prices than GOs prices, so only plants without support schemes are willing to export GOs).

E.1.7. At the time of the issuing request, the applicant has to indicate whether the GOs are for export to other AIB Domains or not. Only the GOs issued as eligible for “exports to the AIB hub” should be considered as EECS GO. In this case, the applicant has to get the STC signed. This is the only difference with the rest of GO.

E.2 Processes

This section demonstrates compliance with the following EECS Rules:

C3.4.1	C3.4.3	C3.5.1	C3.5.2	C3.5.3	D7.1.2	N6.4.
O6.4.						

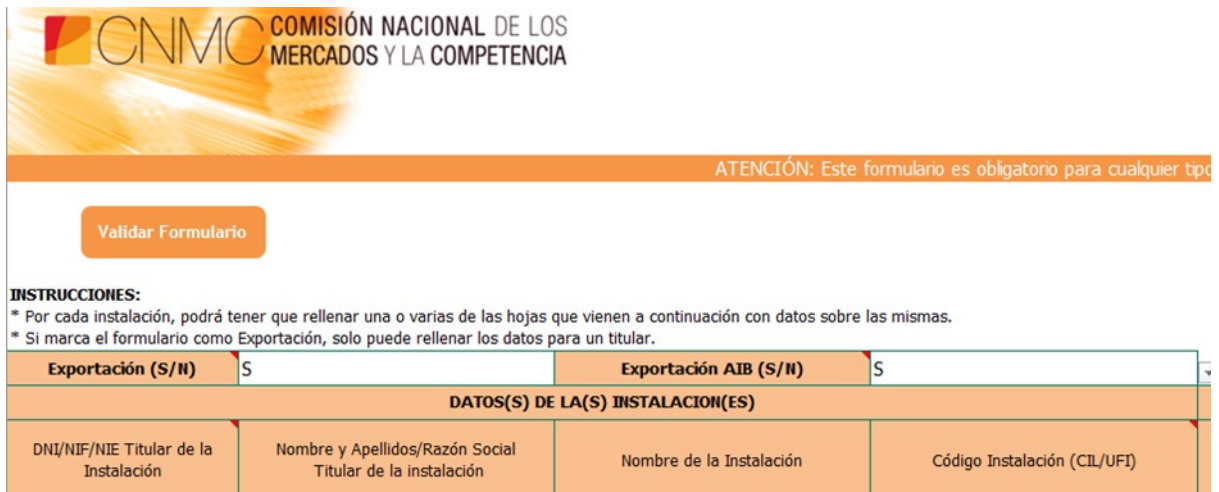
E.2.1. All requests must be submitted by the electronic portal, and there is a clear identification by electronic signature.

Request for issuing: The device owner or its Authorised Agent must electronically submit to the CNMC a complete request in the format of the standard model published on the website of the CNMC: “Expedición” file”

<https://gdo.cnmc.es/CNE/accesoDescargaFormularios.do>

Request for issuing for export: If the issuing of GO is for export purposes, the Production Device owner or its representative must submit the request to CNMC marking yes “S” in the box for export “*para exportación*”.

In this case, the participant cannot use that GO in the Spanish Domain.



ATENCIÓN: Este formulario es obligatorio para cualquier tipo de instalación.

Validar Formulario

INSTRUCCIONES:
 * Por cada instalación, podrá tener que rellenar una o varias de las hojas que vienen a continuación con datos sobre las mismas.
 * Si marca el formulario como Exportación, solo puede rellenar los datos para un titular.

Exportación (S/N)	S	Exportación AIB (S/N)	S
DATOS(S) DE LA(S) INSTALACION(ES)			
DNI/NIF/NIE Titular de la Instalación	Nombre y Apellidos/Razón Social Titular de la instalación	Nombre de la Instalación	Código Instalación (CIL/UFI)

E.2.2. Issuing periods are always on a monthly basis.

As all GOs must be identified with a code number, it is not possible to issue GOs with decimal figures. In order to solve this, the GOs issued are rounded at the previous whole number for all months included in the issuing request. Then, all leftovers are added up, rounded to the previous whole number and issued in the last month of the issuing request.

E.2.3. After the issuing request is submitted, the Registry Operator checks that the request is in conformity with the GO System defined in the legislation.

Then, automatically, the Registry Operator verifies that the Production Device is in the registry and compares the GOs requested (in MWh) with the metering information in the database, and if necessary, reduces the amount of GOs to issue.

After other internal controls, a report with all operations of Issuing, transferring, exports, etc. is prepared to be signed by the CNMC Regulatory Supervisory Board.

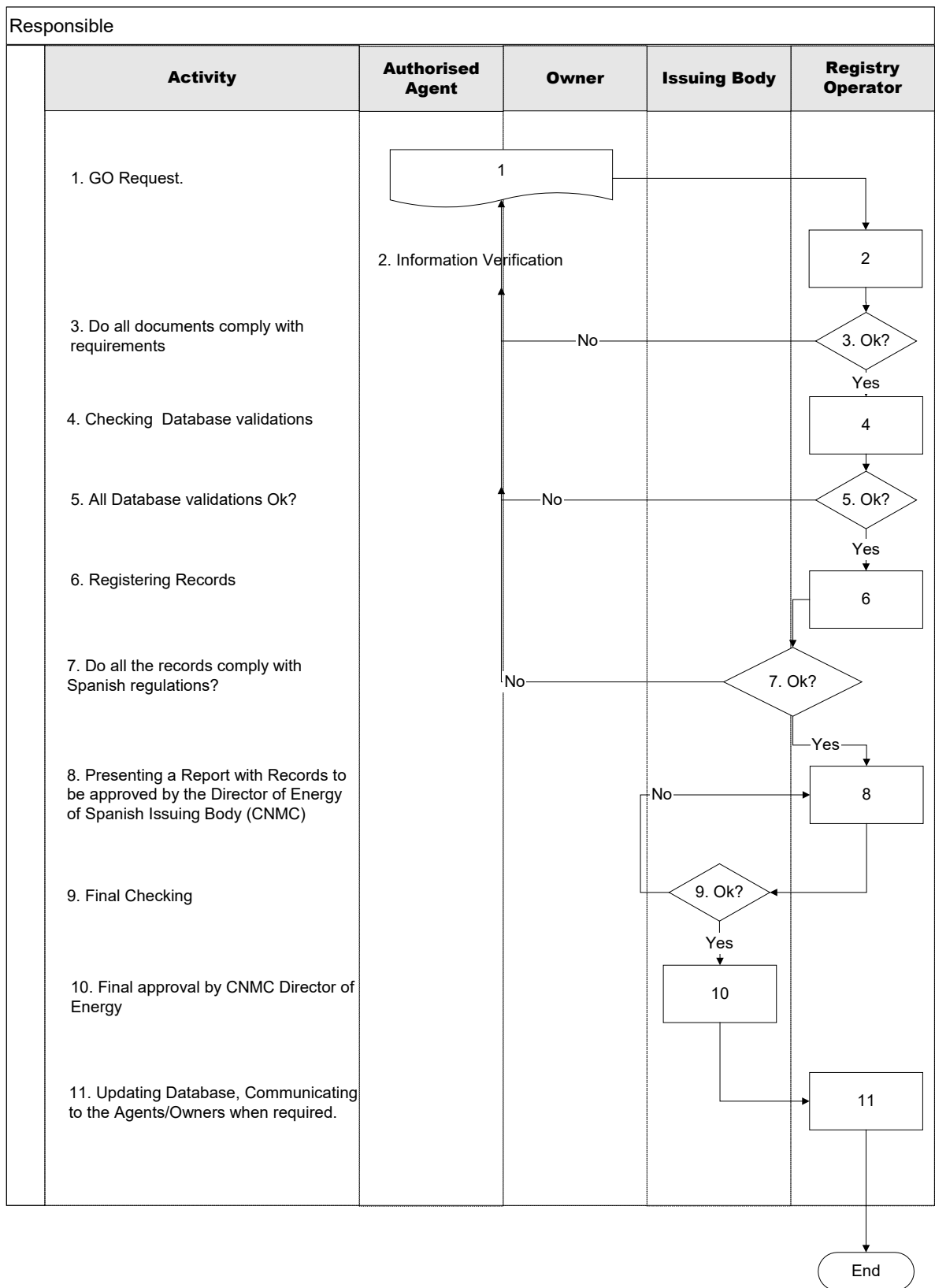
An operation approved by CNMC involves an entry on the account of the participant. Final operations approved are published on the website.

Example of issuing:

<https://gdo.cnmc.es/CNE/mostrarPdfexpedicionesPorInstalacion.do>

- “Año de las Garantías expedidas (AAAA):” Type year.
- Choose “pdf” or “excel”.
- Choose “listadoexpediciones_2020.COG.xls” for Cogeneration or “listadoexpediciones_2020.xls” for Renewable.

E.2.4. Flow diagram for the Issuing process (Other processes like transferring, imports, exports, etc have a similar flow)





EECS Domain Protocol

Notes:

1-7: Requests are automatically processed by the Registry operator, but in case of any breach of the requirements or validations, errors have manual handling. (see E.8.).

Participants can check the “status” of the request on the website.

6. Requests of GO issuing are combined with Measurement data (see E.3.)

11 Final operations approved by CNMC Regulatory Supervisory Board are published on the website.

E.2.5. Deadlines:

In accordance with art. “Decimoquinto.tres” of the “Circular 1/2018”, deadlines are as follows:

GO deadlines according Circular 1/2018:

		1	2	3	4	5	6	7	8	9	10	11	12	13	14	15	
Responsible	Activity	JANUA	FEBRU	MARCH	APRIL	MAY	JUNE	JULY	AUGUS	SEPTEN	OCTOB	NOVEN	DECEM	JANUA	FEBRU	MARCH	
	Generation																
Participant	Issuing / export request to CNMC														And further months		
CNMC	GOs issuing by CNMC															And further months	
Participant	Other operations (Transferring, import, cancelation in final consumer) request from participant to CNMC																10th of March (*)
	Expiry																(*)
CNMC	FINAL DISCLOSURE																31st of March

(*) After 10th of March, there is no possibility to request any operation. After 31st of March, there is no possibility to use any GO

The aforementioned provision sets that:

Requests for the issue and export of guarantees of origin for month “*m*” should be submitted before the last day of the month “*m +8*”, and in any case before 31 January of the next year.

The guarantees of origin for the month of generation “*m*” must be issued before the last day of the month “*m +10*”, and in any case before 28 February of the next year.

Guarantees of origin issued or imported corresponding to the energy generated in the month of production “*m*” are automatically expired on the first day of month “*m+12*”.



EECS Domain Protocol

The issue for the importation of guarantees of origin for year n must be submitted by 15 February of year $n+1$, and no applications can be made in respect of guarantees already expired.

The request for transfer or redemption to a final consumer of guarantees of origin for the year n , must be submitted before 10 March of year $n + 1$, which is not possible for guarantees of origin that have already expired. For the purpose of calculating the period the date of entry will be considered of the applications and communications in the electronic record of the CNMC.

Example A : GO for February 2020 energy ($m=2$):

1.-Production device owners can request for issuing GO up to 31st of October 2020 ($m+8$).

2.-CNMC should issue the GO up to 31st of December 2020 ($m+10$). GOs go to account holder.

3.-Account holder should request an export request or a transfer request to a national Supplier until 31st of January 2021. ($m+11$: expiration date)

The account holder cannot request for any other operation after 31st of January 2021.

Finally, the 31st of March 2021, this GO will be included in the disclosure, and there is no possibility to use it anymore.

Example B : GO for June 2020 energy:

1.-Production device owners can request for issuing GO up to 31st of January 2021. (max. deadline for issuing requests)

2.-CNMC should issue the GO up to 28th of February 2021 (max. deadline for issuing). GOs go to account holder

3.-Account holder should request an redemption request or a transfer request to a national supplier until 10th of March 2021. (max. deadline for transferring and redemption requests)

The account holder cannot request for any other operation after 10th of March 2021.

Finally, the 31st of March 2021, this GO will be included in the disclosure, and there is no possibility to use it anymore.



EECS Domain Protocol

E.3 Measurement

This section demonstrates compliance with the following EECS Rules:

D6.1.2	N6.4.	O6.4				
--------	-------	------	--	--	--	--

E.3.1. Metering regulation is in the Royal Decree 1110/2007 of 24 August on the approval of the Regulations on Measurement Points of the Electricity System.

<https://www.boe.es/buscar/act.php?lang=es&id=BOE-A-2007-16478&tn=1&p=>

Every plant must have its own metering system. Measurement periods for Production Devices may vary from 1 hour to 1 month according to the applicable legislation. Issuing periods are always on a monthly basis.

The DSO and TSO are responsible for meter reading and are legally nominated as Authorised Measurement Bodies by this Royal Decree.

E.3.2. The Authorised Measurement Bodies send metering information about net electricity generation of all plants. It is mandatory to have the measuring equipment located at frontier points between the activities of generation, transport and distribution (article 2).

Net electricity is also defined in the RD 1110/2007, in art. 3.3.31, as energy measured in power plant busbar end equivalent to gross energy minus losses.

E.3.3. As explained, metering data for CNMC GOs System and CNMC RES support schemes settlement and payment System use the same metering data.

Metering data are sent by the measurement bodies in a text file format and by an specific CNMC e-registry, which is technically prepared to get big amounts of data.

Procedures for Authorised Measurement Bodies to send information are described in: "Circular 1/2017, Decimocuarto, c)"

<https://www.boe.es/buscar/act.php?id=BOE-A-2017-1881>

This provision sets that measurement bodies must send information in the 7 first working days of every month, about all CIL (Device Code for Settlement) data for energy in month m - 1, m -4 and m-11. It is also defined that energy data must be net output (gross energy minus losses) and must be metered in the border point of transmission or distribution grid.

E.4 Energy Storage (Including Pumped Storage)

This section demonstrates compliance with the following EECS Rules:

N5.3.1						
--------	--	--	--	--	--	--

Orden ITC/1522/2007, in art. 2, paragraph 2 sets that electricity coming from pumped water should not be considered as renewable energy. GOs may be issued for pumped



EECS Domain Protocol

storage devices, but the energy consumed by the pump is fully deducted from the output of the device.

Producers submit a pumping consumption declaration in the issuing request. See Annex 4.

The Technical System Operator (TSO) is the measurement body for big hydro plants (more than 50 MW). TSO sends actual output information and pumping consumption for every plant, so the Production Declaration is compared to the values sent by the measurement body, and guarantees are issued accordingly.

E.5 Combustion Fuels (e.g. Biomass) and Production Devices with multiple energy inputs

This section demonstrates compliance with the following EECS Rules:

N6.3.2	O6.3.2					
--------	--------	--	--	--	--	--

The registrant must submit a monthly consumption declaration for each fossil fuel used in the production device. See Annex 4

In order to issue the right amount of GO for the electric energy actually coming from RES, the system use a formula:

$$\text{Maximum of GO} = E \times R$$

Where:

E = net electric energy generation from measurement system

R (Ratio)=E energy from RES fuel / Σ (energy from RES fuel+energy from fossil fuel)

Energy from RES and energy from fossil fuel are taken from the monthly consumption declaration

E.6 Format

This section demonstrates compliance with the following EECS Rules:

C3.5.4	C3.5.5	N6.5.	N6.6	O7	O8	
--------	--------	-------	------	----	----	--

E.6.1. EECS Certificates shall be Issued in such format as may be determined by AIB.

E.6.2. Nuclear and fossil fuels are not eligible for the GOs System.

All GOs operations through the AIB Hub will be in accordance with the Hub User Compliance Document: AIB-EECS-SD03 HubCom Registration Databases.

(Note: At the date of the review of this document, the GO System never received a cogeneration export request.)

E.7 Transferring EECS Certificates

This section demonstrates compliance with the following EECS Rules:



EECS Domain Protocol

C5.1.1	C5.1.3	C5.1.6				
--------	--------	--------	--	--	--	--

- E.7.1. Transferring, export and import processes are described in section E.2. An operation approved by CNMC involves an entry on the account of the participant. Final operations approved are published on the website.
- E.7.2. Transferring of GOs must be requested by the Account holder using the “Transferencia” formulary request. The final destination of Transferring is a supplier company in the Spanish Domain.
<https://gdo.cnmc.es/CNE/accesoDescargaFormularios.do>
- E.7.3. When exporting GOs, Production Device owners or Authorised Agents can request GOs exports using the “Exportacion” application form request:
<https://gdo.cnmc.es/CNE/accesoDescargaFormularios.do>

Only GOS issued to domestic Production Devices “for export” can be exported. Then, the export request follows the whole process described in E.2.3. When the operation is approved by the CNMC Regulatory Supervisory Board, the system is able to send the export to the HUB, and, if the export transfer is successful, the export operation is available on the website like the rest of the operations.

CNMC approves the operation about that GO just for one export, and it is not possible to use the same GO anymore. The export of a guarantee of origin will result in an automatic status of “Exported”, and these GO cannot be used for another purpose (such as National transfers from any Production Device owner to any Spanish supplier company).

- E.7.4. Importing GOs is only possible for supplier companies. The supplier must submit a request, using the “Importacion” application form request:
<https://gdo.cnmc.es/CNE/accesoDescargaFormularios.do>

Then, the import request follows the whole process described in E.2.3. When the operation is approved by the CNMC Regulatory Supervisory Board, the system is able to receive the HUB transfer, and if the import transfer is successful, the import operation is available on the website as the rest of operations.

E.8 Administration of Malfunctions, Corrections and Errors

This section demonstrates compliance with the following EECS Rules:

C5.1.7	C8.4.1	C8.4.2	C8.4.3	C8.5.1	D9.1.2	
--------	--------	--------	--------	--------	--------	--

- E.8.1. Once issued, the details of an EECS Certificate cannot be altered or deleted except to correct an error
- In accordance to Circular 1/2018, Art. Decimocuarto, CNMC shall correct any mistake about the GO System ex officio or at the request of the interested parties (taking into account deadlines defined in section E.2).
- The process followed when an error is identified is:



EECS Domain Protocol

- When a minor error is identified by remediable technical reasons; the Registry Operator will try to transfer the GO again.
- When the Registry Operator identifies a failure, which involves some fields of the Export files (such as Technology) the Registry Operator will ask for the Original Account Holder to ask for those changes and will proceed to send again the transfer.
- When the Registry Operator identifies a complete failure that is impossible to correct, due to destination regulations, impossible technical reasons, or changes in the number of GO transferred, the Registry Operator will help to solve any problem, and will contact, by email or any other way, if necessary with the Hub Superuser or the other Registry Operator involved, to fix the issue, analysing the causes, and sending the transfers again for exports, or fixing imports records to be able to receive GOs again.

When receiving a NAK, if the error code and/or the error description refer to the business case and not to a technical problem, then the Registry Operator will consider the issue as closed.

- The registry operator, will in any case try to solve the problem with other parties.

In the case of any inaccurate data, or any breach of the rules of the GO regulatory framework by any participant, CNMC shall correct the operation in the System according to that breach or inaccuracy.

E.9 End of Life of EECS Certificates – Cancellation

This section demonstrates compliance with the following EECS Rules:

C5.2.3	C6.1.1	C7.1.1	C7.2.1	C7.2.2	C7.2.3	C7.3.1
--------	--------	--------	--------	--------	--------	--------

E.9.1. Cancellation is removing a Certificate from circulation. Once Cancelled, a Certificate cannot be moved to any other account, and so is no longer tradable.

According to Spanish regulation, a Guarantee of Origin may get at the end of its life because of two different operations:

-Redemption (assignment of a Guarantee of Origin to a Spanish final consumer). This is considered as “cancellation”.

The Redemption process can be made by a Production Device owner to the benefit a consumer or, more often, by an energy supplier to a consumer. Redemption of a GO to the benefit of an energy supplier is not possible.

Redemption requests are available on the website:

<https://gdo.cnmc.es/CNE/accesoDescargaFormularios.do>

For disclosure purposes, as the calculation is for the “supplier mix disclosure” and not for the “product mix disclosure”, Redemptions of GOs from a supplier to a consumer have the same consideration as GOs in the accounts of energy suppliers.



EECS Domain Protocol

Like the rest of the operations in the GO system, information on the GO Redemptions to a final consumer is available on the website. Typing the year and a valid CUPS code (Supply code for consumers):

<https://gdo.cnmc.es/CNE/informePdfPorCUPS.do>

In both cases, CNMC shall withdraw the annotation of the corresponding registry account, so it is not possible to use the GO again.

-Assignment to the disclosure calculation of an electricity supplier (GOs that are on the account of an electricity supplier on 31st of March). This is considered as “cancellation”, even if there is no cancellation statement.

The second option for “cancellation” is the electricity disclosure: all GOs on the accounts of energy suppliers on the 31st of March are taken into account in order to calculate the yearly fuel mix disclosure for these companies. After this disclosure calculation, the GOs cannot be used again. In accordance with the “Cancel” Definition of the EECS Rules, even if it is not exactly according to the process described in the EECS Rules as there is no request of the account holder, these GOs are to be considered as a Cancellation in the suppliers’ account.

E.10 End of Life of EECS Certificates – Expiry

This section demonstrates compliance with the following EECS Rules:

C5.2.3	C6.1.1c	E6.2.1h				
--------	---------	---------	--	--	--	--

E.10.1. EECS Certificates which have expired are no longer valid for transfer or any other operation.

In accordance to Orden ITC/1522/2007, art. 12.4:

“Guarantees of origin for the month of generation “m” automatically expire on the first day of month “m+12”.

As explained in section E.7.4, the Expiration date is checked by the System during the import process. An import request for expired GOs is rejected giving back an error to the HUB, and those GOs will not be available in Spain.

E.10.2. . According to the deadlines defined in E.2.3., requests for transfer or redemption to a final consumer of GOS for the year n, must be submitted before the 10th of March of year “n +1”. After this deadline, it is not possible to make any operation request about guarantees of the previous year. On the 31st of March of year “n+1”, all GOs related to energy of year “n” in the suppliers account will be considered in the disclosure, and there is no possibility to use it anymore.

GOs related to energy of year “n” expired in a Supplier company account are also considered for the disclosure of electricity of year “n” of that supplier company.



EECS Domain Protocol

Otherwise, according to the deadlines of expiry, the energy of January, February and March would never be considered in the disclosure.

GO in accounts of Production Device Owners are useless after this deadline and they are not included in the disclosure. So, even though some of the GOs do not have 12 months of lifetime, in practice, after the deadline of 31st of March, GOs from the previous year will have the same consideration as expired GOs.

E.11 End of Life of EECS Certificates – Withdrawal

This section must demonstrate compliance with the following EECS Rules:

C5.2.3	C6.1.1	C8.2.1				
--------	--------	--------	--	--	--	--

In accordance to art. “Decimoséptimo” of the Circular 1/2018 “Check and control”, from the result of new information or inspection, CNMC can change any operation in the system. This includes the withdrawal of the GO, even at the date of this document, CNMC has never used this article.

F Issuer's Agents

This section is not required if the roles have been identified and explained in B3.

F.1 Production Auditor

There is a CNMC department responsible for audits of Production Devices, including compliance of the metering systems in accordance to "Real Decreto 1110/2007"

Every year there is a CNMC inspection plan where these plants are included in a random way or other criteria (technology, etc).

As an example, 2935 plants were included in the inspection plan for 2021.

F.2 Production Registrar

The Registry is the responsibility of CNMC, but the operation is outsourced to our Registry Operator, currently VECTOR ITC GROUP.

As the GOs system is a voluntary and free of charge system, there are no tariffs or fees for services, but Registration is a pre-condition to participate in the GOs System.

F.3 Measurement Body(/ies)

Authorised Measurement Bodies send metering information about net electricity generation of all plants. It is mandatory to have the measuring equipment located at frontier points between the activities of generation, transport and distribution. There are no charges for this service. Measurement Bodies are:

- TSO:

RED ELÉCTRICA DE ESPAÑA, S.A.U.

Website: www.ree.es

- DSO:

All information of DSOs is in CNMC website:

<https://sede.cnmc.gob.es/listado/censo/1>



G Activity Reporting

G.1 Public Reports

This section demonstrates compliance with the following EECS Rules:

E3.3.4	HPA section 14.2					
--------	------------------	--	--	--	--	--

G.1.1. For each technology, statistical information are published on the following website <https://gdo.cnmc.es/>

By clicking in “Tramites según tipo”. regarding

- certificates issued, transferred internally intra-domain, imported, exported, redeemed, **during each month** prior to the current month,
- certificates issued, transferred internally intra-domain, imported, exported, redeemed, **in relation with the energy produced during each month** prior to the current month.

G.1.2. The annual report with a summary of all operations is available on the website (entering the year)

<https://gdo.cnmc.es/CNE/accesoEstadistica.do>

G.2 Record Retention

This section demonstrates compliance with the following EECS Rules:

A12.1.1	C5.1.2					
---------	--------	--	--	--	--	--

G.2.1. There are public records of all operations with GOs –issuing, transferring, exporting, etc-on the website. All records relating to any EECS Certificate in the Database are retained indefinitely.

G.2.2. All GOs requests are conducted through digital access to the CNMC e-registry Portal, and are recorded on the servers:

<https://sede.cnmc.gob.es/>

G.3 Orderly Market Reporting

This section demonstrates compliance with the following EECS Rules:

E4.2.5	E4.2.6	E4.2.7				
--------	--------	--------	--	--	--	--

CNMC will inform AIB of any relevant changes in legislation about EECS scheme in Spain, especially if it requires changes to this Domain Protocol.

CNMC will enforce the rules in relation to any act of non-compliance. CNMC will provide all required information to AIB to resolve or investigate such action.



H Association of Issuing Bodies

H.1 Membership

This section demonstrates compliance with the following EECS Rules:

C2.2.6	C2.2.7					
--------	--------	--	--	--	--	--

- H.1.1. The Association of Issuing Bodies brings together the issuing bodies of European energy certificate schemes. The AIB promotes the use of a standardised system, based on a harmonised environment, structures and procedures in order to ensure the reliable operation of European energy certificate systems. With its independent and peer reviews, and its periodic audits, the AIB provides a robust framework for reliable and fraud-resistant GO systems. Among others, it can also act by suspending transfers through the Hub. Membership of AIB facilitates mutual recognition of GOs across Europe.
- H.1.2. In case CNMC ceases to be a Scheme Member of an EECS Scheme, it shall revise its EECS Registration Database so that every Production Device registered therein ceases to be registered for the purposes of EECS. Certificate issuing under EECS would stop, and EECS GOs would remain tradable only until Expiry.
- H.1.3. In case CNMC ceases to be the Authorised Issuing Body for EECS Certificates, it shall revise its EECS Registration Database so that each Production Device in the Domain ceases to be registered for the purposes of EECS Certificates, it shall stop issuing EECS GOs and after a transitional period the registry shall be taken offline.

H.2 Complaints to the AIB

H.2.1. An Account Holder is allowed to notify the Secretary General of AIB in writing in case:

- a) an Authorised Issuing Body in relation to an EECS Certificate is in breach of any of the provisions of Product Rules in relation to EECS Certificate; or
- b) any Product Rules do not comply with the relevant provisions of the EECS Rules, and evidence is provided substantiating such allegation, and that the Authorised Issuing Body has been given adequate opportunity to respond to such allegation.

The General Secretary of AIB shall invite the relevant Authorised Issuing Body to respond to the allegation.

I Change Control

I.1 Complaints to CNMC

Market participants can send complaints and questions by phone (9h-18h) to the number (34-917147710) or by email to gdo.informacion@cnmc.es according to the contact information on the GOs website.

For formal complaints, see next chapter “disputes”



EECS Domain Protocol

I.2 Disputes

As GOs operations are Administrative Decisions, participants can raise formal appeals against operations approved by CNMC Regulatory Supervisory Board.

The process to solve this appeal is the one regulated in Law 29/1998, of 13th July, of Contentious-Administrative Jurisdiction, (disposición adicional cuarta.5).

<https://www.boe.es/eli/es/l/1998/07/13/29/con#dacuarta>

The body in charge of solving appeals against CNMC decisions is the “Audiencia Nacional”. There is no deadline to give judgment in proceedings before Spanish contentious-administrative courts.

I.3 Change Requests

This section demonstrates compliance with the following EECS Rules:

E4.2.3	E6.2.1e	L5.1.1				
--------	---------	--------	--	--	--	--

Any participant can suggest a change request to the Domain Protocol. The request should be analysed by CNMC, and if CNMC agrees with it, there would be a proposal of changes to be approved (where appropriate) by AIB. The implementation of modifications will be notified to the participant who made the request and take effect on publication of the documentation on the website of the AIB.

Any modifications to this Domain protocol are subject to approval by the AIB that such changes do not conflict with the EECS rules



Annex 1: Contacts List

Authorised Issuing Body

Company name: CNMC
Contact person: José Miguel Unsión
Department: Electric Energy
Address: C/Alcala, nº 47, 28014 Madrid, Spain.
Phone: +34 917879838
e-mail: josemiguel.unsion@cnmc.es
Website: www.cnmc.es
Website for GOs:
<https://gdo.cnmc.es/CNE/navegacion.do?accion=home&reloadNews=true>

Competent Authority (if different from the Authorised Issuing Body)

CNMC

Registry support /Production Registrar/Registry Operator. (All this roles by appointment of CNMC and on behalf of CNMC)

Company name: VECTOR ITC GROUP
Contact person: Javier Martínez Fernandez
Address: Ctra. De La Coruña, 38. 28231 Las Rozas de Madrid. Madrid, España.
Phone: +34 91.290.90.76 Ext. 213
e-mail: francisco.martinezf@softtek.com

Website: www.vector-itcgroup.com
www.softtek.eu

NGC Scheme Operator

N/A

Production Auditors

Company name: CNMC
Contact person: Francisco José Baeza
Department: Inspections, settlement and clearance
Address: C/Alcala, nº 47, 28014 Madrid, Spain.
Phone: 34917879843
E-mail: francisco.baeza@cnmc.es
Website: www.cnmc.es



EECS Domain Protocol

Website for GOs:

<https://gdo.cnmc.es/CNE/navegacion.do?accion=home&reloadNews=true>

Measurement Bodies

- TSO:

Company name: RED ELÉCTRICA DE ESPAÑA, S.A.U.

Departamento: Medidas eléctricas

Address: Paseo del Conde de los Gaitanes N° 177, 28109 Alcobendas (Madrid)

Phone: (34) 916 508 500

e-mail: simel@ree.es

Website: www.ree.es

- DSO:

All information of DSOs is in CNMC website:

<https://sede.cnmc.gob.es/listado/censo/1>



EECS Domain Protocol

Annex 2: Production Device Owner Application Form

MODIFICACIÓN SUJETO - CIL

Datos del nuevo titular

DNI/CIF:*	<input type="text"/>		
Nombre y apellidos/Razón social:*	<input type="text"/>		
Dirección:*	<input type="text"/>		
Código Postal:*	<input type="text"/>	Provincia:*	<input type="text"/>
Municipio:*	<input type="text"/>		

Imprimir

Anterior

Guardar

Finalizar

Datos de contacto del nuevo titular

DNI:*	<input type="text"/>		
Nombre y apellidos:*	<input type="text"/>		
Teléfono 1:*	<input type="text"/>	Teléfono 2:*	<input type="text"/>
Teléfono 3:*	<input type="text"/>	Fax:*	<input type="text"/>
Email 1:*	<input type="text"/>		
Email 2:*	<input type="text"/>		
Tipo de comunicación preferida:*	<input type="text" value="Email"/>		



Annex 3: Device Registration Form

<https://primaequivalente.cnmc.es/sgpecne/>

COMISIÓN NACIONAL DE LOS
MERCADOS Y LA COMPETENCIA

Sede electrónica
Facilitamos todos
sus trámites

Home Cerrar Sesión

ALTA DE INSTALACIONES MASIVA

Datos de la solicitud

Instalaciones Browse...

Resultado del alta

REGISTRO	NIF/CIF TITULAR	NIF/CIF REPRESENTANTE	FECHA INICIO REPRESENTANTE	NIF/CIF SUJETO LIQUIDACIÓN	CIL	NOMBRE DEL CIL	MUNICIPIO	IDENTIFICADOR PROVINCIA	CÓDIGO AUTONÓMICO	CÓDIGO MITYC	FECHA INSCRIPCIÓN DEFINITIVA EN REGISTRO	FECHA PUESTA EN MARCHA	FECHA CONVOCATORIA	FECHA ADSCRIPCIÓN A C.C. CONTROL	IDENTIFICADOR ENCARGADO DE LA LECTURA	IDENTIFICADOR TIPO PUNTO MEDIDA
IDENTIFICADOR DISTRIBUIDORA	IDENTIFICADOR CNAE	POTENCIA_CIL	IDENTIFICADOR REAL DECRETO	IDENTIFICADOR GRUPO/SUBGRUPO	IDENTIFICADOR COMBUSTIBLE PRINCIPAL	IDENTIFICADOR OPCIÓN VENTA	FECHA CERTIF. CONTINUIDAD	DISCRIMINACIÓN HORARIA	BILATERAL	COMPLEMENTO ENERGÍA	PRECIO ESPECÍFICO	COMPLEMENTO REPOTENCIACIÓN	PRECIO REPOTENCIACIÓN	FECHA REPOTENCIACIÓN	DATOS HIBRIDACIÓN	IDENTIFICADOR TIPO HIBRIDACIÓN
IDENTIFICADOR TIPO INSTALACIÓN HIBRIDACIÓN	IDENTIFICADOR TIPO COMBUSTIBLE HIBRIDACIÓN	PORCENTAJE HIBRIDACIÓN 1	IDENTIFICADOR TIPO INSTALACIÓN HIBRIDACIÓN 2	IDENTIFICADOR TIPO COMBUSTIBLE HIBRIDACIÓN	PORCENTAJE HIBRIDACIÓN 2	IDENTIFICADOR TIPO INSTALACIÓN HIBRIDACIÓN 3	IDENTIFICADOR TIPO COMBUSTIBLE HIBRIDACIÓN 3	PORCENTAJE HIBRIDACIÓN 3	IDENTIFICADOR TIPO INSTALACIÓN HIBRIDACIÓN 4	IDENTIFICADOR TIPO COMBUSTIBLE HIBRIDACIÓN 4	PORCENTAJE HIBRIDACIÓN 4	COMPLEMENTO EFICIENCIA	VALORES PROYECTO INSTALACIÓN	FECHA INICIO REE	FECHA FIN REE	IDENTIFICADOR GRUPO DE COMBUSTIBLE
VALOR PES	VALOR CALOR ÚTIL	JUSTIFICACIÓN CALOR ÚTIL	ENERGÍA BRUTA COGENERACIÓN	ENERGÍA NETA COGENERACIÓN	TENSIÓN	Nº EXPEDIENTE MYTyc	FASE_ENTRADA	POT_FICD	INE	TECN01	PORC1	TECN02	PORC2	TECN03	PORC3	POTENCIA_FP

Annex 4: Production/Consumption Declaration



COMISIÓN NACIONAL DE LOS MERCADOS Y LA COMPETENCIA

Bombeo


ATENCIÓN: este formulario es obligatorio para instalaciones de bombeo.

Validar Formulario

INSTRUCCIONES

* Los meses de consumo de la instalación deben coincidir con el periodo de la solicitud de expedición

CÓDIGO INSTALACIÓN (CIL/UF1)	Consumo de bombeo asociado a la producción de GdO's (MWh)	MES CONSUMO (MM)	AÑO CONSUMO (AAAA)



COMISIÓN NACIONAL DE LOS MERCADOS Y LA COMPETENCIA

Combustibles

ATENCIÓN: Este formulario es obligatorio para instalaciones de biomasa, híbridas, residuos o de cogeneración de alta eficiencia. Se debe rellenar una fila por cada tipo de combustible utilizado. Los meses de consumo de la instalación deben coincidir con el periodo de la solicitud de expedición a excepción de instalaciones de cogeneración de alta eficiencia, donde deberá incluirse la información **desde Enero del año** para el que se solicita garantías hasta fin de periodo solicitado.

Validar Formulario

INSTRUCCIONES

- * En esta tabla puede insertar los consumos de diferentes combustibles en diferentes instalaciones en diferentes meses.
- * Por cada instalación/mes debe informar una fila por cada tipo de combustible empleado (combustible principal de la instalación, renovable de apoyo o fósil).
- * Como combustible principal, se asume el correspondiente a su subgrupo. Sí deben informar de lo consumido y el PCI.
- * En instalaciones termoeléctricas, no debe seleccionar "Principal" en Tipo de combustible. Se declarará únicamente los combustibles fósiles y/o biomasa de apoyo.

CÓDIGO INSTALACIÓN (CIL/UF1)	Tipo de Combustible	Consumido (t ó kl)	PCI (te/t ó te/ kl)	MES CONSUMO (MM)	AÑO CONSUMO (AAAA)



EECS Domain Protocol



EECS Domain Protocol

Annex 5: EECS Electricity Cancellation Statement

There is no single cancellation statement. A Guarantee of Origin may be cancelled due to different operations. (See Section E.9.1)



EECS Domain Protocol

Annex 6: Application Form for Production Device De-Registration

BAJA DE INSTALACIÓN

Datos titular del CIL/Instalación	
NIF/ CIF*	Nombre y Apellidos / Razón social*
Fecha inicio titular* 01/11/2009	...
Dirección	
Dirección*	
Código Postal*	Municipio* Provincia*
Datos de contacto del titular	
NIF Pers. contacto*	Nombre y Apellidos*
Teléfono 1*	Teléfono 2* Teléfono 3* Fax*
Email 1*	Email 2*
Tipo comunicación*	Observaciones
Email	
<input type="checkbox"/> Marcar esta casilla en caso de no existir representante	
Datos representante del CIL/Instalación	
NIF/ CIF*	Nombre y Apellidos / Razón social*
Fecha inicio repr.* 01/11/2009	...
Dirección	
Dirección*	
Código Postal*	Municipio* Provincia*
Datos de contacto del representante	
NIF Pers. contacto*	Nombre y Apellidos*
Teléfono 1*	Teléfono 2* Teléfono 3* Fax*
Email 1*	Email 2*
Tipo comunicación*	Observaciones
Email	



EECS Domain Protocol

Annex 7: Application Form for Production Device Changes

MANTENIMIENTO REGIMEN RETRIBUTIVO

Datos titular del CIL/Instalación	
NIF/ CIF*	Nombre y Apellidos / Razón social*
Fecha inicio titular* 26/10/2012	...
Dirección	
Dirección*	
Código Postal*	Municipio* Provincia*
...	
Datos de contacto del titular	
NIF Pers. contacto*	Nombre y Apellidos*
Teléfono 1*	Teléfono 2* Teléfono 3* Fax*
Email 1*	Email 2*
Tipo comunicación* Email	Observaciones

Marcar esta casilla en caso de no existir representante

Datos representante del CIL/Instalación	
NIF/ CIF*	Nombre y Apellidos / Razón social*
Fecha inicio repr.* 01/11/2009	...
Dirección	
Dirección*	
Código Postal*	Municipio* Provincia*
...	
Datos de contacto del representante	
NIF Pers. contacto*	Nombre y Apellidos*
Teléfono 1*	Teléfono 2* Teléfono 3* Fax*
Email 1*	Email 2*
Tipo comunicación* Email	Observaciones



EECS Domain Protocol

MANTENIMIENTO REGIMEN RETRIBUTIVO

Datos del CIL

CIL*

Nombre CIL*

Datos de la solicitud

Fecha del cambio*

08/04/2014



Motivo de modificación*

- | | |
|--|--|
| <input type="checkbox"/> Modificación de potencia | <input type="checkbox"/> Compl. por cont. de suministro frente a huecos de tensión |
| <input type="checkbox"/> Cambio de régimen económico previsto en la normativa | <input type="checkbox"/> Complemento por reactiva |
| <input type="checkbox"/> Cambio de opción de venta | <input checked="" type="checkbox"/> Cambio de Categoría/Grupo/Subgrupo |
| <input type="checkbox"/> Cambio de régimen de discriminación horaria | <input type="checkbox"/> Cambio de combustible principal |
| <input type="checkbox"/> Alta o rescisión de contrato bilateral | <input type="checkbox"/> Hibridación |
| <input type="checkbox"/> Complemento por repotenciación de instalaciones eólicas | <input type="checkbox"/> Tarifa o prima con precio específico |
| <input type="checkbox"/> Otra modificación | |

Observaciones*