

EECS

DOMAIN PROTOCOL

FOR

AS CONEXUS BALTIC GRID – LATVIA (GAS)

Document Reference	AIB-2025-DPLV-Conexus Latvia
Prepared by	EECS Scheme Member
Release	1/2023
Date	01 July 2025
Based on EECS Rules	Release 8 v1.8

EECS DOMAIN PROTOCOL
CONEXUS BALTIC GRID – LATVIA (GAS)

DOCUMENT CONTROL

Version	Date	Originator	Reviewers
1	13 December 2023	Ance Ansone	Katrien Verwimp, Maria Del Carmen Rodriguez Valdes
2	April 2024	Ance Ansone	Erwin Cornelis, Maria Del Carmen Rodriguez Valdes

Version	Date	Approver	Responsibility

CHANGE HISTORY

Version	Description
1	Initial domain protocol for Latvia (gas)
2	Amendments to the domain protocol for Latvia (gas)

EECS DOMAIN PROTOCOL
CONEXUS BALTIC GRID – LATVIA (GAS)

TABLE OF CONTENTS

A	Introduction.....	- 5 -
B	General	- 6 -
B.1	Scope	- 6 -
B.2	Status and Interpretation	- 7 -
B.3	Roles and Responsibilities	- 7 -
B.4	Summary: Issuance scope	- 9 -
C	Overview of National Legal and Regulatory Framework.....	- 10 -
C.1	Energy Market context for gases in Latvia	- 10 -
C.2	The EECS Framework.....	- 11 -
C.3	National Energy Source Disclosure.....	- 12 -
C.4	National Public Support Schemes	- 13 -
C.5	EECS Product Rules.....	- 14 -
C.6	Non-EECS Certificates in the Domain	- 14 -
C.7	Local Deviations from the EECS Rules	- 14 -
D	Registration	- 14 -
D.1	Registration of an Account Holder	- 14 -
D.2	Resignation of an Account Holder.....	- 15 -
D.3	Maintenance of standing data	- 16 -
D.4	Account Holder data Error handling.....	- 16 -
D.5	Registration of a Production Device	- 16 -
D.6	De-Registration of a Production Device	- 20 -
D.7	Maintenance of Production Device Registration Data	- 21 -
D.8	Audit of Registered Production Devices.....	- 22 -
D.9	Registration Error/Exception Handling	- 23 -
E	EECS GO System Administration	- 25 -
E.1	Issuing EECS GOs	- 25 -
E.2	Additional requirements for injection through injection point of remotely produced and transported biomethane	- 26 -
E.3	Processes	- 27 -
E.4	Measurement	- 29 -
E.5	Energy Storage	- 30 -
E.6	Conversion Issuance	- 30 -

EECS DOMAIN PROTOCOL
CONEXUS BALTIC GRID – LATVIA (GAS)

E.7	Combustion Fuel (e.g., Biomass) Input and Production Devices with multiple energy inputs - 30 -
E.8	Format - 32 -
E.9	Transferring EECS GOs - 34 -
E.10	Administration of Malfunctions, Corrections and Errors - 36 -
E.11	End of Life of EECS GOs – Cancellation..... - 37 -
E.12	End of Life of EECS GOs – Expiry..... - 37 -
E.13	End of Life of EECS GOs – Withdrawal..... - 38 -
F	Issuer’s Agents - 39 -
F.1	Production Auditor - 39 -
F.2	Production Registrar..... - 39 -
F.3	Measurement Body(/ies) - 39 -
G	Activity Reporting - 40 -
G.1	Public Reports..... - 40 -
G.2	Record Retention..... - 40 -
G.3	Orderly Market Reporting - 40 -
H	Association of Issuing Bodies - 41 -
H.1	Membership - 41 -
H.2	Complaints to the AIB..... - 41 -
I	Change Control..... - 43 -
I.1	Complaints to Conexus..... - 43 -
I.2	Disputes - 43 -
I.3	Change Requests - 43 -
Annex 1	Contacts List - 45 -
Annex 2	Account Application/Amendment Form - 46 -
Annex 3	Device Registration Form - 48 -
Annex 4	Production and Consumption Declaration - 50 -
Annex 5	Sustainability Declaration..... - 52 -
Annex 6	Example of EECS GO in the Registry..... - 53 -
Annex 7	Example of Production Device view In the Registry - 54 -
Annex 8	EECS GO Cancellation Statement - 56 -

A INTRODUCTION

The Association of Issuing Bodies vzw (AIB) governs the European Energy Certificate System (hereinafter - EECS) – integrated European framework for issuing, holding, transferring and otherwise processing electronic records (EECS Certificates), certifying, in relation to specific quantities of output from production devices, attributes of its source and/or the method and quality of its production. AIB and EECS accordingly is funded by the membership fees of the issuing bodies of energy certificates, being governmentally appointed competent bodies for guarantees of origin.

The purpose of the EECS Rules is to secure, in a manner consistent with the EN16325 standard, European Union law and relevant national laws, that systems operating within the EECS framework are reliable, secure, and inter-operable. The EECS Rules is a constitutional document of the Association of Issuing Bodies (hereinafter – AIB), issued under its Articles of Association. As such, the EECS Rules document sets out the obligations of the AIB Members in connection with their membership of AIB and EECS Schemes and their capacity as Hub Participant. These obligations are owed to the AIB.

The EECS Rules establishes harmonised standards for the creation, maintenance, transfer, cancellation, and other processing of EECS Certificates. The EECS Rules requires Members to adopt these standards as a pre-requisite for participation as a Scheme Member in individual EECS Schemes, such as Gas Scheme.

This Domain Protocol describes how the EECS Standard has been implemented in the Latvian Domain for a gas guarantees of origin (hereinafter also – EECS GOs) and it indicates where that system deviates from that standard.

The EECS framework including the Domain Protocol aims to ensure robustness and transparency for all parties involved.

A Domain Protocol promotes quality and clarity, as it:

- explains local rules;
- provides clear information to all stakeholders (consumers, market parties, other members, government, the EU Commission etc.);
- facilitates assessment of compliance and permissible deviation from the EECS Rules;
- facilitates audit; and
- translates local rules into a single format and language, supporting each of the above.

Important contact information is provided in Annex 1.

Definitions and interpretations used in the Domain Protocol are in the meaning of EECS Rules Release 8 v1.8 as of May 30, 2024. The EECS Rules are available here: <https://www.aib-net.org/eeecs/eecsr-rules>

Relevant **subsidiary documents** are available here: <https://www.aib-net.org/eeecs/subsidiary-documents>

Relevant **fact sheets** are available here: <https://www.aib-net.org/eeecs/fact-sheets>

EECS DOMAIN PROTOCOL
CONEXUS BALTIC GRID – LATVIA (GAS)

B GENERAL

B.1 Scope

This section demonstrates compliance with the following EECS Rules:

A11.1.1	C3.1.1	E6.2.1a	E6.3.1	E6.3.2	O2.1.1	C2.1.3
---------	--------	---------	--------	--------	--------	--------

- B.1.1 This Domain Protocol sets out the procedures, rights, and obligations, which apply to the Domain of Latvia and relate to the EECS Gas Scheme as defined in the EECS Rules.
- B.1.2 Production Device qualification for this Domain will be determined such that, the Production Device is effectively located in Latvia. A Production Device can be a separately measured device or group of devices with single Export Meter that produces a certain amount of nett energy with or without a connection point to the interconnected gas distribution network and gas transmission network (hereinafter - interconnected gas network).
- a. The borders of the Domain are Production Devices in the territory of Latvia that produce biogas, biomethane and synthesis gas from renewable energy sources (hereinafter – gas);
 - b. If the Production Devices, which are located at the border between the Latvian Domain and another Domain will be introduced, the provisions foreseen in section C2.1.3 of EECS Rules apply.
- B.1.3 AS “Conexus Baltic Grid” (hereinafter - Conexus) is authorised to Issue EECS Certificates relating to the following EECS Product(s): EECS GOs for Network-compatible Gas.
- B.1.4 For biomethane, that is not injected into the interconnected gas network no EECS GOs are issued. In the future such EECS GOs will be issued and will be exported over the AIB hub only after both conditions will be fulfilled:
- B.1.4.1 The Regulation of the Cabinet of Ministers issued pursuant to the Article 117. §4 of Energy Law of Latvia, will come into force;
 - B.1.4.2 Appropriate updates of this domain protocol, among other, including information on Authorised Measurement body for biomethane that is not injected into interconnected gas network, will be approved by AIB.
- B.1.5 The EECS GO is an electronic document issued by Conexus upon application of the Account Holder. Purpose of EECS GO is to prove that the unit of energy (gas) has been produced from renewable energy sources.
- B.1.6 Conexus is authorised to Issue EECS GOs:

EECS DOMAIN PROTOCOL

CONEXUS BALTIC GRID – LATVIA (GAS)

- B.1.6.1 relating to the following EECS Product Type(s): Methane: applicable to biogas that has been upgraded into network compatible gas for injection into the interconnected gas network ;
- B.1.6.2 relating to the following Energy Carriers: Energy Gas (except hydrogen) and the following energy sources: renewable energy sources including biomass, for the following Types of Gas: Hydrocarbon gas (methane) in accordance with EECS Rules Fact Sheet 22 Type of Gas; for the biomethane if it is produced in line with Energy Law, EECS Rules and Domain Protocol for Latvia.
- B.1.7 When proposing amendments to the gas Domain Protocol, Conexus shall ensure that these amendments will support EECS GO issuance, transfer and cancellation in a robust, effective, efficient and adequate way.

B.2 Status and Interpretation

This section demonstrates compliance with the following EECS Rules:

E6.2.1d	E6.2.4	E6.3.1	E6.3.4
---------	--------	--------	--------

- B.2.1 This document refers to EECS Rules Release 8 v1.8. It is based on the Domain Protocol template release March 2023.
- B.2.2 The EECS Rules are subsidiary and supplementary to national legislation. Chapter XV§1 of Energy Law sets main principles for gas guarantees of origin.
- B.2.3 This Domain Protocol describes the implementation of the EECS Rules and its subsidiary documents in Latvia. Any deviations from the provisions of the EECS Rules that may have material effect are set out in section C.7 of this document.
- B.2.4 Definitions and interpretations used in the Domain Protocol are in the meaning of EECS Rules Release 8 v1.8 as of May 30, 2024 (available here: <https://www.aib-net.org/eecs/eecsr-rules>), Section B and Section O. Also, definitions and interpretations are understood as explained in prEN 16325 rev (draft CEN EN 16325) as of December 2022 (available here: <https://www.lvs.lv/en/products/157187>).
- B.2.5 The capitalised terms used in this Domain Protocol shall have the meanings ascribed to them in the EECS Rules except as stated in section C.7 of this document.
- B.2.6 This Domain Protocol is made contractually binding between any EECS Market Participant and Conexus by agreement in the form of the Standard Terms and Conditions (hereinafter – STC).
- B.2.7 In the event of a dispute, the approved English version of this Domain Protocol will take precedence over a Latvian language version.

B.3 Roles and Responsibilities

This section demonstrates compliance with the following EECS Rules:

A11.1.1	C3.1.1	E4.2.2	E6.2.1c	H
---------	--------	--------	---------	---

- B.3.1 The Authorised Issuing Body for EECS GOs for Renewable Gas in Latvia is Conexus. Conexus has been appointed as an Authorised Issuing Body for EECS GOs under Energy Law, Paragraph

EECS DOMAIN PROTOCOL
CONEXUS BALTIC GRID – LATVIA (GAS)

- 1 of the Article 117. §3 (https://likumi.lv/ta/id/49833/redakcijas-datums/2023/07/01#p117_3). Its role is to administer the EECS Registration Database (hereinafter – Registry) and its interface with the EECS Transfer System. Information regarding service fees and invoicing is available on Conexus website.
- B.3.2 AS “Augstprieguma Tīkls” (hereinafter - AST) is responsible for issuing of the EECS GOs for Electricity in Latvia that has been produced from renewables (including biomass) and fossil (only for High-Efficiency Cogeneration).
- B.3.3 The Competent Authority for EECS GOs for renewable gas (excluding hydrogen) in Latvia is Conexus. Its role is defined by legislation to be responsible for the operation of EECS GOs for gas in Latvia. Energy Law, especially Chapter XV §1 sets main principles for guarantees of origin system: <https://likumi.lv/ta/id/49833-energetikas-likums>.
- B.3.4 The Authorised Measurement Body for the Network-compatible Gas injected into interconnected gas network according to the national legislation is Conexus as the unified gas transmission and storage system operator. It is responsible for the measurement and quality control of Output from a Production Device for Network-compatible Gas, which is injected into interconnected gas network. All Export Meters, operated by Conexus, are included into the standard commercial gas accounting system and shall provide required Gross Gas Production data to the Registry for issuance of EECS GOs. The Cabinet of Ministers of the Republic of Latvia determines the Measurement Body and determines the procedure for metering, certification and supervision over the circulation of biomethane that is not injected into the interconnected gas network (hereafter - off-grid biomethane).
- B.3.5 Conexus issues EECS GOs for Network-compatible Gas which is injected in the interconnected gas network in accordance with national law and the EECS Rules, and this Domain Protocol. Conexus will issue EECS GOs for off-grid biomethane only after the adoption of the relevant Regulation of the Cabinet of Ministers pursuant to the Section 117. §4 of Energy Law, available here: https://likumi.lv/ta/id/49833/redakcijas-datums/2023/07/01#p117_4). After that, Conexus will initiate amendments to the Domain Protocol and include relevant information to ensure that after adoption of Regulation of the Cabinet of Ministers and the corresponding amendments to the Domain Protocol, off-grid biomethane will be able to receive EECS GOs.
- B.3.6 The Production Auditor is an independent legal entity accredited by the Latvian National Accreditation Bureau and fulfils the accreditation requirements for biomethane production including registration of Production Device, and follows Best Practice Recommendations developed by AIB, especially Recommendations for Production Device Inspections available on AIB’s website <https://www.aib-net.org/eecs/best-practice-recommendations>.
- B.3.7 One of the Production Auditor's roles is to verify Production Declarations to Conexus for the purposes of EECS GO issuing. This is to ensure the continued fulfilment of the conditions of registration.
- B.3.8 The Production Auditor checks and certifies:

EECS DOMAIN PROTOCOL

CONEXUS BALTIC GRID – LATVIA (GAS)

- B.3.8.1 compliance of the Production Device with the data submitted by the Producer (Account Holder) to register in the Registry. The role of the Production Auditor is to verify and approve information which is provided from the Account Holder via Annex 3, Annex 4 and Annex 5. The Production Auditor uses industry best practices which also include on-site inspections.
- B.3.8.2 the correctness and veracity of the data submitted by the Producer, who requests issuance of the EECS GOs;
- B.3.8.3 Production and Consumption Declarations, also Sustainability Declarations submitted to Conexus for the purposes of EECS GO issuing.
- B.3.9 The Producer and Production Auditor are responsible for the accuracy of the data and information they submit to the Production Registrar. The Production Registrar cannot be held (directly or indirectly) liable for submitted information, since Production Registrar relies on information provided by Producer (Account Holder) and approved by Production Auditor.
- B.3.10 Production Registrar – Conexus acts as the Production Registrar and is responsible for accessing applications to register Production Devices for the purposes of relevant EECS Product and national legislation. Production Registrar relies on the Production Auditor for information conformity. The Production Registrar can under no circumstances be held (directly or indirectly) liable for the performance of its activities, except in the case of wilful misconduct or intentional damage.
- B.3.11 The Account Holder in the Registry is a legal person who has successfully completed the registration process and for whom Conexus has created an Account in the Registry, activated it, and the applicant has received full rights to create the root user for the Account. The Account Holder can apply for registration of the Production Device in the Registry.
- B.3.12 The Registry operated by Conexus can be accessed via the website <https://grex.grexel.com/en/public/home>.
- B.3.13 All application forms, general information and final publication of EECS GOs operations are available on the Conexus website.
- B.3.14 Contact details for the principal roles and Issuing Body agents are given in Annex 1 and are published on the Conexus website.
- B.3.15 Interaction with other issuing bodies in this Domain is not formalised in any other way than by separating responsibilities, namely, AST is responsible for EECS GO issuing for Electricity, while Conexus is responsible for issuing EECS GOs for gas and their functions and responsibilities do not overlap. Conexus and AST are both members of AIB.

B.4 Summary: Issuance scope

- B.4.1 In summary, Conexus has been authorised to Issue the following types of energy certificates:

Issuing Body issues certificates for Gas		Type of Gas**
	Energy Source	Methane
EECS GO	Renewable sources	x
National GO (non-EECS*)	none	N/A

EECS DOMAIN PROTOCOL
CONEXUS BALTIC GRID – LATVIA (GAS)

EECS Support Certificate	none	N/A
EECS Target Certificate	none	N/A
EECS NGC (name)	none	N/A
National certificate other than GO (non-EECS*)	none	N/A

(*) Non-EECS certificates may not be transferred over the AIB hub.

C OVERVIEW OF NATIONAL LEGAL AND REGULATORY FRAMEWORK

C.1 Energy Market context for gases in Latvia

- C.1.1 The liberalisation of Latvian gas market began on 3rd April 2017 when Conexus, as the unified natural gas transmission and storage system operator, upon the full completion of ownership unbundling, started to provide the third-party-access services in relation to natural gas transmission system in the territory of Latvia and natural gas storage in Inčukalns underground gas storage facility. In addition to its unified gas transmission and storage system operators' tasks, according to Energy Law Conexus is appointed to be the Competent Authority and EECS GO issuing body for renewable gas (biogas, biomethane and synthesis gas) to perform EECS GO administration from 1 July 2023.
- C.1.2 In Latvia, most of biogas is produced at biogas plants on farms, landfills and wastewater treatment facilities. The biogas production in 2019 was approximately 153 million m³. As of time of writing, there are two biomethane producers that is connected to the interconnected gas network.
- C.1.3 Transparency information about gas transmission, storage, flows, balancing and tariffs, relevant regulation and green initiatives for renewable gas development is available on Conexus website.
- C.1.4 Overview of the gas market (and overall Latvian energy market) can be accessed on the webpage of national regulatory authority of Latvia – the Public Utilities Commission (hereinafter also – the Regulator): <https://www.sprk.gov.lv/en/content/natural-gas> There is a potential of market access for remotely located biomethane producers, that would want to inject biomethane into the interconnected gas network, by transporting biomethane as bioCNG using vehicles for biomethane injection into the interconnected gas network, following the concept of “virtual pipeline”. In this case metering of the gross energy is performed at the injection point into the interconnected gas network by the same Authorised Measurement body as in the case of network-connected Production Devices. The amount of the Net energy for issuing of the EECS GOs is calculated following the same procedure as in the case of network-connected Production Devices (see section E.1).

EECS DOMAIN PROTOCOL
CONEXUS BALTIC GRID – LATVIA (GAS)

C.2 The EECS Framework

This section demonstrates compliance with the following EECS Rules:

D3.1.2	E6.2.1b	E6.2.1d	N8	O.10
--------	---------	---------	----	------

C.2.1 For this Domain, the relevant local enabling legislation is as follows:

- C.2.1.1 Directive (EU) 2018/2001 of the European Parliament and of the Council of 11 December 2018 on the promotion of the use of energy from renewable sources (recast).
- C.2.1.2 The Energy Law transposing, among others, Directive 2009/73/EC of the European Parliament and of the Council of 13 July 2009 concerning common rules for the internal market in natural gas and repealing Directive 2003/55/EC; (current consolidated version available only in Latvian) is available here: <https://likumi.lv/ta/id/49833-energetikas-likums>
- C.2.2 Conexus has been appointed as an Authorised Issuing Body for EECS GOs under Energy Law, Paragraph 1 of the Article 117. §3 https://likumi.lv/ta/id/49833/redakcijas-datums/2023/07/01#p117_3. Chapter XV §1 of the Energy Law is dedicated to gas guarantees of origin and it entered into force on 1 July 2023.
- C.2.3 The Energy Law specifies the framework concerning the GO system in Latvia. Article 117. §1 among other, states that in order to prove to energy consumers or end-users that a part of the energy or the amount of energy is obtained from renewable energy resources, the origin of the relevant renewable energy is certified with gas GO. A producer who produces biogas, biomethane or synthesis gas from renewable energy resources may request a gas EECS GO for the energy unit of the gas produced. No more than one EECS gas GO shall be issued for each unit of energy produced, and it shall be issued for a certain amount of energy – one (1) megawatt hour (MWh) and in line with E.1.6. Unpurified biogas cannot be injected in interconnected gas transmission and distribution network so it shall be treated as gas that is not injected in the network in accordance with B.3.4 of this Domain Protocol.
- C.2.4 The EECS GO can be accompanied with information on the compliance of the energy produced with the sustainability and greenhouse gas saving criteria (proof of sustainability under EU Voluntary Scheme) according to Paragraph 2 of Section 117. §2 of the Energy Law. Information on proof of sustainability shall be submitted by the Account Holder upon his request for EECS GOs (Annex 5).
- C.2.5 The EECS GOs can be transferred to other EECS Market Participants 12 months after the production of the energy unit specified in the EECS GO. The EECS GO can be cancelled no later than six months after its 12-month validity expires. If not cancelled earlier, the EECS GO expires and is automatically deleted from the particular Account where it resides 18 months after the production of the relevant unit of energy specified in the EECS GO.
- C.2.6 Conexus shall publish information about issued EECS GOs on its website along methodology on calculating fees for use of EECS GO registry and fees themselves.
- C.2.7 The amount of EECS GOs to be issued shall be determined using data provided by the Authorised Measurement Body and Consumption Declaration submitted by the producer and duly certified by the Production Auditor. EECS GOs are issued for the Net Gas Production for the period of one gas month.

EECS DOMAIN PROTOCOL
CONEXUS BALTIC GRID – LATVIA (GAS)

- C.2.8 A person submitting the EECS GO Issuing Request shall submit a Production and Consumption Declaration (Annex 4), in respect of the same period as that to which EECS GO Issuing Request relates.
- C.2.9 Conexus provides measurement data availability to the Producer; data can also be requested by writing to (go@conexus.lv) or over time data will be automatically available in the Conexus client portal.
- C.2.10 For the Producer directly connected to interconnected gas network and Registrants using biomethane injection point for the injection of the biomethane into the interconnected system, EECS GOs are issued based on the calculation that includes Gross Gas Production accounted by the Conexus operated measurement system directly connected to the physical entry into the interconnected gas network, and Consumption Declarations submitted by the Producer and duly certified by the Production Auditor. EECS GOs are issued for the Net Gas Production for the minimum period of one gas month.
- C.2.11 In order to avoid double counting of biomethane to the biomethane injection point in the interconnected gas network, an Account Holder applying for an EECS GO is prohibited from certifying the same energy unit twice, other than with the voluntary schemes for sustainability certification, the details and reference of which are provided to the Conexus for inclusion in the EECS GO, when submitting the EECS GO issuing request.
- C.2.12 No EECS GOs are issued for self-consumption.
- C.2.13 The Energy Law requires gas GO system to be in line and implemented based on EECS Scheme.
- C.2.14 Conexus recognizes EECS GOs issued by other Members, and where registry is connected to the AIB hub. The EECS GOs can be transferred from one Account Holder to another.

C.3 National Energy Source Disclosure

This section demonstrates compliance with the following EECS Rules:

E3.3.14			
---------	--	--	--

- C.3.1 For this Domain, the authorised body for supervision of Disclosure of the origin of electricity and natural gas, including biomethane, towards consumers is the Regulator. The Regulator is responsible for supervision of disclosure of the origin of the following Energy Carriers: electricity and natural gas, including, biomethane.
- C.3.2 Paragraph 4 of Section 107. §1 of the Energy Law delegates to the Regulator the authority to determine what information and to what extent the gas trader shall include in the end-user bills and informative materials. The Regulator describes process of disclosure in following regulation: Decision No.1/16 of the Board of Public Utilities Commission of the December 3, 2020 “Regulations Regarding Information to Final Customers of Electricity and Natural Gas”, available at: <https://likumi.lv/ta/en/en/id/319222-regulations-regarding-information-to-final-customers-of-electricity-and-natural-gas>.
- C.3.3 Brief summary of the disclosure methodology and process: The trader shall provide to end-consumer information, together with invoice or with other presented information and promotional materials.

EECS DOMAIN PROTOCOL
CONEXUS BALTIC GRID – LATVIA (GAS)

- C.3.3.1 Invoices and accompanying information materials that traders send to end-consumers shall contain, inter alia, the following information: the name of the natural gas product received; the average forecasted amount of natural gas consumption per month during the billing period in kWh; the amount of natural gas supplied during the billing period in kWh; natural gas price for the billing period, which includes transmission and storage system services [EUR/kWh]; charge for the use of distribution system [EUR], showing the unit value; the charge for the transmission system service at the exit point to Latvian domestic consumption [EUR/kWh], the date on which the monthly payment is due; the term of the natural gas trade contract; a comparison of the total amount of payments made by the end-user during the billing period with the calculated amount for the volume of services actually received; information on the weighted average gross calorific value of natural gas under standard conditions during the billing period [kWh/m³] for the conversion of the cubic metres of natural gas consumed into kilowatt-hours [kWh] or information on the website where the conversion of the m³ of natural gas consumed into kWh can be carried out; information on how to access detailed consumption information, information about gas origin and environmental impact.
- C.3.3.2 At least once a year, no later than by 1st April, the gas trader shall provide end-consumers with access to informative material on the origins of natural gas supplied within the previous calendar year, by indicating:
- information on the originating country of the natural gas or liquified natural gas supplied for the previous calendar year, if this kind of information is available to gas trader;
 - natural gas and biomethane sources in Latvia, if this kind of information is available to the trader.
- C.3.4 Gas trader is expected to provide information foreseen in C.3.3 regarding its own supply portfolio. In addition, there is no obligation to use information on cancelled gas EECS GO for disclosing information in accordance with C.3.3, but information on cancelled EECS GOs may be used for source disclosure purpose, since there is no other reliable or regulated way on a national level to provide information on the origin of energy.
- C.3.5 Cancellation for usage in another Domain (Ex-Domain Cancellations) is allowed under the following restrictions: Member has AIB hub connection or Domain allows such cancellation if Conexus has a Bilateral Agreement with Member for the other Domain. For information contact Conexus: (go@conexus.lv).

C.4 National Public Support Schemes

This section demonstrates compliance with the following EECS Rules:

None directly			
---------------	--	--	--

- C.4.1 According to Section 117. §4 of Energy Law (https://likumi.lv/ta/id/49833/redakcijas-datums/2023/07/01#p117_4.), the Cabinet of Ministers sets the rules for the off-grid biomethane, which is not going to be injected in interconnected gas network, circulation and state support rules for gas obtained from renewable energy sources.

EECS DOMAIN PROTOCOL
CONEXUS BALTIC GRID – LATVIA (GAS)

- C.4.2 In case an Account Holder has received support for its Production Device or Production, it must inform Conexus at registration of Production Device or by submitting amendments to existing registration.

C.5 EECS Product Rules

This section demonstrates compliance with the following EECS Rules:

E6.2.1f	E6.2.1g		
---------	---------	--	--

- C.5.1 The EECS Product Rules as applied in Latvia are set out in sections D. Registration and E. EECS GO System Administration of this document. Subject to the applicable legislation, Conexus issues EECS GOs for the purpose of disclosure of gas produced from renewable sources and for final consumer transparency.

C.6 Non-EECS Certificates in the Domain

- C.6.1 Non – EECS Certificates do not exist in Latvia. No EECS GOs are issued in combination with Label Scheme.

C.7 Local Deviations from the EECS Rules

- C.7.1 This section identifies those areas where there are minor differences from the EECS Rules without impacting the integrity of EECS GOs. There are no local deviations from the EECS Rules.

D REGISTRATION

D.1 Registration of an Account Holder

This section demonstrates compliance with the following EECS Rules:

G2.2.1			
--------	--	--	--

- D.1.1 A legal person who is not a member of the Association of Issuing Bodies, or such member's affiliate or agent, can apply to be an Account Holder in the Registry. The submission of the request for opening an account in the Registry can be done by submitting a completed application form (Annex 2).
- D.1.2 In order to receive the right to use the Registry, the applicant must sign an agreement with Conexus under the STC which is published on the Conexus website.
- D.1.3 Conexus checks if in relation to the applicant there are no sanctions imposed by a Member State of the European Union or of the North Atlantic Treaty Organisation affecting significant financial and capital market interests which could have an impact on the fulfilment of obligations under STC.
- D.1.4 In case of changes in the data or documents of the applicant after the submission of the application, the applicant shall notify Conexus thereof not later than within 3 (three) business days.

EECS DOMAIN PROTOCOL
CONEXUS BALTIC GRID – LATVIA (GAS)

- D.1.5 Conexus shall evaluate the application referred to in section D.1.3, the documents appended thereto within 10 (ten) business days from the date of receipt thereof. Conexus may request the applicant to submit the missing documents and additional information.
- D.1.6 If Conexus has requested the applicant to submit additional information or documents, the applicant shall submit such within 10 (ten) business days from the date of dispatch of the request. If the applicant does not submit the requested additional information or documents within deadline specified in this section, the applicant shall be deemed to have withdrawn its application.
- D.1.7 The request is considered submitted only after the applicant has submitted to Conexus all information pursuant to Annex 2 of this Domain Protocol. Conexus shall within 5 (five) business days from the receipt of the documents and additional information, as foreseen in Annex 2 of this Domain Protocol prepare the STC and shall send it to the applicant electronically.
- D.1.8 Conexus shall notify the applicant of refusal to the application within 1 (one) business day after the review of the application by sending a notice to the electronic mail address indicated in the application. Conexus shall send a motivated refusal to the application electronically or by post to the address indicated in the application.
- D.1.9 The applicant shall return to Conexus a signed STC electronically, within 15 (fifteen) business days from the day of dispatch of the STC. If the applicant does not return to Conexus the signed STC within 15 (fifteen) business days from the day of dispatch of the STC, the applicant shall be deemed to have withdrawn its application.
- D.1.10 Conexus shall sign STC within 3 (three) business days.
- D.1.11 Following the bilateral signing of the STC, Conexus creates an Account in the Registry for the Account Holder. When the Account is activated, a log-in authorisation Certificate will be sent via e-mail to the Account Holder, awarding full rights to the created Account (root user). The password to install the Certificate will be sent using authentication application in mobile phone. The applicant is then an Account Holder and can start operating the Account. One Account Holder can have multiple users.
- D.1.12 Conexus may hold an Account in the Latvian domain and may own a EECS GO only for testing purposes, it will report such activity to the Association of Issuing Bodies.

D.2 Resignation of an Account Holder

This section must demonstrate compliance with the following EECS Rules:

None directly			
---------------	--	--	--

- D.2.1 Resignations are handled on an ad hoc basis.
- D.2.2 The Account Holder must notify Conexus of the intent to close the Account. The effective date of closure must not exceed 30 (thirty) business days from the date of receipt of the relevant notification by Conexus. This can be done by submitting via e-mail the form provided in Annex 2 with option “de-register Account” marked.
- D.2.3 Conexus will close the Account as of the effective date on the request or 30 (thirty) business days from the date of receipt of the notification by Conexus whichever is later.

EECS DOMAIN PROTOCOL
CONEXUS BALTIC GRID – LATVIA (GAS)

- D.2.4 The Account must not contain any EECS GOs at the time of closure and all financial claims that Conexus has towards an Account Holder must be settled before the closure of the Account. Conexus requires the Account Holder to transfer or cancel all remaining EECS GOs before closure.
- D.2.5 Conexus is not obliged to return already paid fees of the Account Holder.
- D.2.6 Conexus has the right to terminate the STC, including, termination of the right for Account Holder to hold an Account in case the Account Holder has been subject to international or national sanctions or sanctions imposed by a Member State of the European Union or the North Atlantic Treaty Organization affecting significant financial and capital market interests during the performance of the STC.

D.3 Maintenance of standing data

- D.3.1 The Account Holder must notify Conexus without any delay, in writing of any changes due to come into effect that will result, or unplanned changes that have resulted, in the information recorded in the Registry in relation to the Account Holder becoming inaccurate. Conexus will amend the Registry. It is possible to inform Conexus about changes by writing to (go@conexus.lv).

D.4 Account Holder data Error handling

- D.4.1 If Conexus detects errors in the Account Holder's information, it will correct them without any delay. The relevant Account Holder will be informed of such actions.

D.5 Registration of a Production Device

This section demonstrates compliance with the following EECS Rules:

C2.1.1	C2.1.2	C2.2.4	D4.1.2	E3.3.10	E3.3.11		O6.2
--------	--------	--------	--------	---------	---------	--	------

- D.5.1 The owner of a Production Device or an entity duly authorised by the owner, who is an Account Holder in the Registry, may register a Production Device in the Registry. The entity duly authorised by the owner must provide evidence to the satisfaction of Conexus that it has the appropriate authority to register the Production Device and that it can comply with the requirements of the Product Rules with respect to the imposition of duties on the owner and/or operator of the Production Device. Every Production Device can only be registered once. The owner or operator of the Production Device is referred to as 'Producer'.
- D.5.1.1 Registrants shall provide the following information to Conexus, where plant requirements are always related to the EECS standard, and that is:
- the applicant's name and address and any additional contact details;
 - the Product (EECS GO) with respect to which it is applying for registration;
 - name of the Account Holder;
 - the location of the Production Device;
 - details of the Exit Measurement Point(s) for the Production Device;
 - details of any Production Auxiliaries associated with the Production Device;
 - where there are Production Auxiliaries associated with the Production Device and the consumption of these Production Auxiliaries is not determined at an Exit Measurement

EECS DOMAIN PROTOCOL
CONEXUS BALTIC GRID – LATVIA (GAS)

Point, details of Entry Measurement Point(s) at which the Input consumed by the Production Device is determined;

- h. (irrespective of whether or not there is any intention to use such Inputs in connection with the Production Device) all Inputs that may be converted into Outputs by the Production Device, by reference to the Input types set out in the EECS Rules Fact Sheet “Types of Energy Inputs and Technologies”;
- i. the type of Production Device, where this reflects the relevant fuel source(s) for and technology of that Production Device by reference to the fuel sources and technologies set out in the EECS Rules Fact Sheet “Types of Energy Inputs and Technologies”;
- j. the Capacity of the Production Device;
- k. where at the time of such application it has been commissioned, the date on which that Production Device was commissioned;
- l. details of any payments (other than payments arising from the sale of EECS GOs):
 - l.1. which have been received by any person in relation to the Production Device under any of the Public Support schemes set out in the EECS Rules Fact Sheet “Types of Public Support”;
 - l. 2. that are due to accrue to any person in relation to the Production Device under any such Public Support scheme;
- m. a diagram of that Production Device, including details of the location of:
 - m.1. the Exit Measurement Point(s) for the Production Device;
 - m.2. any Production Auxiliaries for the Production Device; and
 - m.3. any Entry Measurement Points for the Production Device; and
 - m.4. the name commonly used to identify the Production Device, provided that the applicant agrees to this information being recorded on EECS GOs that are Issued in relation to the Production Device;
- n. applicants for registration of a Production Device for the purposes of the EECS Product are obliged to provide, if needed, Conexus or Production Auditor access to the Production Device together with records relating thereto so as to verify the information provided in connection with that application, and any application for Registration is to be rejected where such access is not provided on reasonable request;
- o. the Production Device meets the Production Device Qualification Criteria for the EECS GO;
- p. the measurement arrangements for the Inputs of the Production Device satisfy the Product Rules for EECS GOs.

D.5.1.2 As the Production Device is registered into Conexus Registry, it is assigned a unique identifier. GSRN coding is used.

D.5.2 The Account Holder can apply for registration of a Production Device in the Registry. The account where EECS GOs are to be issued must be specified in Annex 3. Production Devices must be located in Latvia. The registration form is available on the Conexus website and Annex 3 of this Domain Protocol. Information provided in Annex 3 must be verified by an accredited the Production Auditor by signing the registration form (Confirmation from the Production Auditor must be received by the Account Holder - the requirements and the link to the list of the Production Auditors is provided in Annex 1 which is also published on the Conexus website.

D.5.3 Confirmation from the Production Auditor is valid for 12 (twelve) months from the date of the inspection result report, prepared by the Production Auditor. The Production Auditor makes periodical audits for Production Devices that are connected to the interconnected gas network

EECS DOMAIN PROTOCOL
CONEXUS BALTIC GRID – LATVIA (GAS)

or those that are using biomethane injection point to transport gas from the production device to the gas network. Production Auditor submits to Conexus verified information needed for Production Device registration and information is periodically updated. The Production Registrar Conexus checks and accepts the registration form if the submitted information coincides with information received from the Production Auditor, the Production Auditor information is no older than 12 (twelve) months.

- D.5.4 In case whereby the applicant or its affiliate is not the owner or sole owner of the Production Device, registration of the Production Device can be done by a third person having a power of attorney duly signed by (other) owner(s) of the Production Device. Conexus checks the data included in a power of attorney against information provided in the official Enterprise Register. In case of doubt Conexus can request additional documents.
- D.5.5 If necessary, Conexus may request additional information for the registration, specifying the time limit within which such information must be submitted.
- D.5.6 Only Production Devices capable of producing gas from renewable energy source and that are equipped with the required metering and quality control equipment complying with Directive 2014/32/EU of the European Parliament and of the Council of 26 February 2014 on the harmonisation of the laws of the Member States relating to the making available on the market of measuring instruments and Regulation of the Cabinet of Ministers No. 212, adopted 12 April 2016, "Metrological Requirements for Measuring Instruments and the Procedures for the Metrological Control Thereof" (available: <https://likumi.lv/ta/en/en/id/281520-metrological-requirements-for-measuring-instruments-and-the-procedures-for-the-metrological-control-thereof>) may be registered in the Registry.
- D.5.7 Conexus checks that the application fulfils the national law, EECS Product Rules and is filled in correctly, including added relevant information described in D.5.1.1. Information is verified based on available data for Conexus (information in application is confirmed by the Production Auditor). In case of doubt regarding the Production Device or when Conexus considers it necessary, Conexus may request an inspection by inviting the Independent Production Auditor. In case doubts are proved being justified by Independent Production Auditor, the costs of Independent Production Auditor's services shall be borne by the Account Holder, in case doubts are false, costs are covered by Conexus.
- D.5.8 If the Production Device satisfies both the Latvian law and the EECS Rules, passes an inspection and if all necessary application information is provided, Conexus registers the Production Device in the Registry within 10 (ten) business days from the date when complete registration information is received and confirms successful registration via e-mail. Conexus may issue EECS GOs only after the date of registration of relevant Production Device in the Registry and for which the relevant measurement data has been collected and determined by Authorized Measurement Body (Conexus). Should the potential Account Holder fail to submit the additional information on the request of Conexus, or the Production Device does not comply with Latvian law or the EECS Rules, Conexus shall reject the application and inform the Account Holder via e-mail.
- D.5.9 The GSRN code is used for Production Device identification purposes, for grid reference EIC (Energy Identification Codes) coding and metering point code is used. Public information relating to the Production Devices will be available in the Registry's public registered Production Device list. Access to full information will be available for the Account Holder

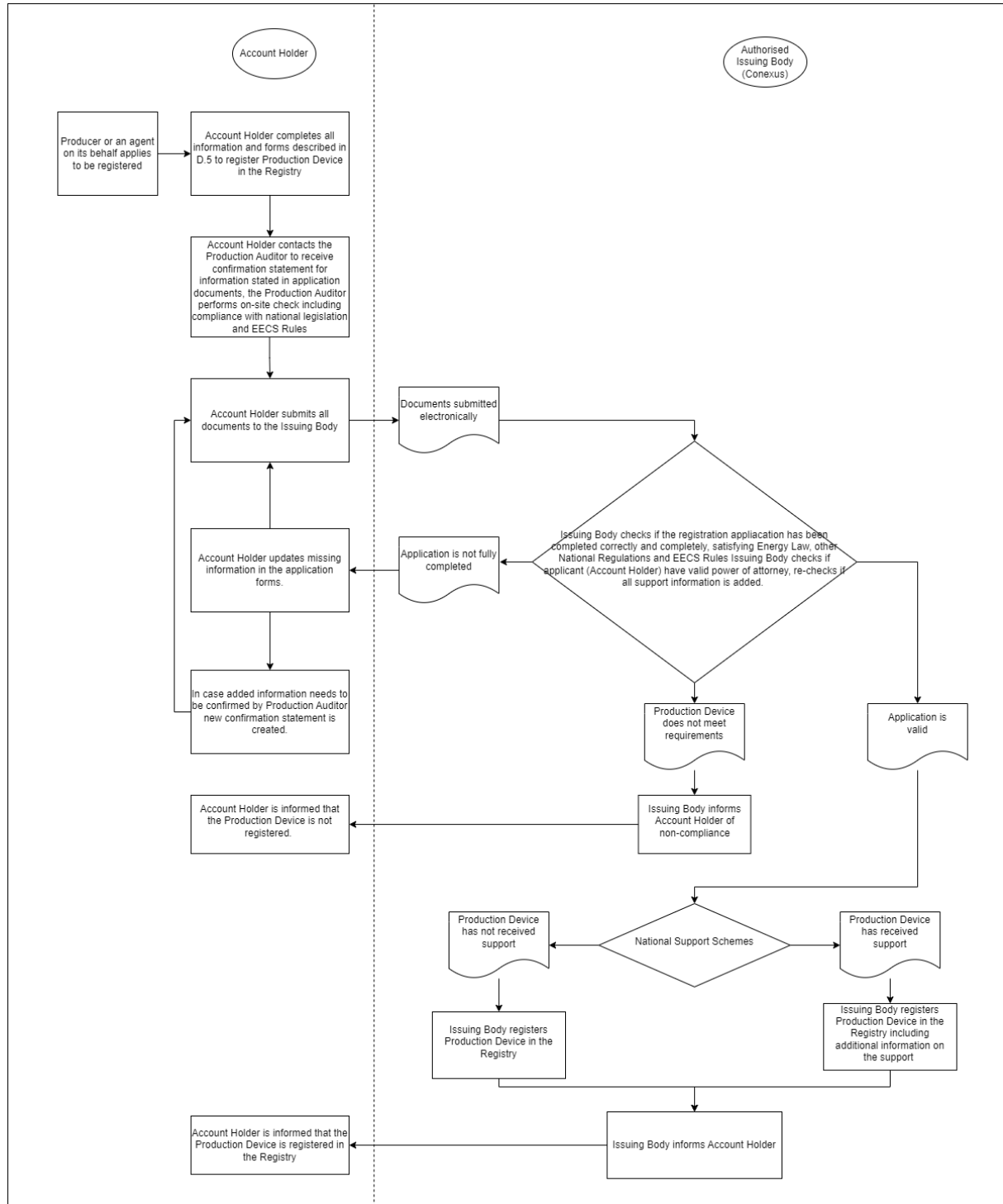
EECS DOMAIN PROTOCOL
CONEXUS BALTIC GRID – LATVIA (GAS)

(Production Device Owners or the Account Holder with Power of Attorney for Production Device) under the Account Holders profile in the Registry.

EECS DOMAIN PROTOCOL

CONEXUS BALTIC GRID – LATVIA (GAS)

D.5.10 Production Device registration process described in following scheme:



D.6 De-Registration of a Production Device

This section must demonstrate compliance with the following EECS Rules:

None directly			
---------------	--	--	--

EECS DOMAIN PROTOCOL
CONEXUS BALTIC GRID – LATVIA (GAS)

- D.6.1 An Account Holder can apply for de-registration of a Production Device in the Registry. The effective date of de-registration must not exceed 30 (thirty) business days from the date of receipt of the relevant application by Conexus. This can be done by electronically signing an Annex 3 and sending it to (go@conexus.lv). In this case the Production Auditor signature is not needed. Conexus will respond to the Account Holder request within 10 (ten) business days and provide information of when the Production Device will be de-registered via e-mail.
- D.6.2 Conexus will update the Registry for that Production Device to show that the Production Device no longer qualifies for EECS GOs with effect as of the effective date on the request or 30 (thirty) business days from the date of receipt of the application by Conexus, whichever is later.
- D.6.3 Conexus is not obligated to return already paid fees of the Account Holder. No additional fees are collected for performing the de-registering process.
- D.6.4 The Registry user shall pay for the Registry service in a calendar year within 10 calendar days from the issue date of the invoice. If the due date falls on a Saturday, Sunday or national holiday of the country where the TSO has its registered office, the final date of the deadline of invoice payment shall be the following business day.

D.7 Maintenance of Production Device Registration Data

This section demonstrates compliance with the following EECS Rules:

C2.2.1	C2.2.2	C2.2.3	C2.2.5	D5.1.2
--------	--------	--------	--------	--------

- D.7.1 The Registrant of a Production Device must notify Conexus of any planned changes due to come into effect that will result, or unplanned changes that have resulted, in:
- The information recorded in the registry in relation to the Production Device becoming inaccurate; or
 - The qualification criteria for the EECS Scheme ceasing to be satisfied with respect to that Production Device.
- D.7.2 In case of changes after Production Device registration the Account Holder is obliged to inform Conexus if the information no longer corresponds to submitted information in the Production Device Application/Amendment Form (Annex 3) provided in the registration process D.5 and/or latest version visible and active in the Registry. Amendments are made when the Account holder submits via e-mail to (go@conexus.lv) the electronically signed Annex 3 with changes made and marked "Amend Production Device".
- D.7.3 Where the capacity of an existing Production Device increases for any reason, including refurbishment or enhancement of the Production Device, then in case added capacity has separate metering such additional capacity may be registered in the Registry as a separate Production Device with specified application process stated in D.5. In case added capacity does not have separate metering then existing Production Device information is amended by filling and submitting form available in Annex 3.
- D.7.4 Only Conexus can change the information in the Registry related to the Production Device. In the Registry, Production Device information revisions can be initiated by the Account Holder, but changes in the Registry are only made once Conexus approves them. The Account Holder

EECS DOMAIN PROTOCOL
CONEXUS BALTIC GRID – LATVIA (GAS)

can view the Production Device version status within the Registry, and in case of questions contact Conexus via e-mail: (go@conexus.lv).

- D.7.5 Where Conexus becomes aware of a change in the Production Device Registration Data (for instance, including, but not limited to, after an inspection), Conexus will evaluate the impact of the changes on the Qualifying Criteria and respond to the Account Holder within 10 business days specifying the decision taken. Conexus may disable the Production Device in the Registry until the updated information is provided, which means the withdrawal of registration of the Production Device for the purposes of EECS GOs may take place. The Production Device may cease to be recorded in the Registry if the Production Device Qualification Criteria for EECS GOs are no longer fulfilled.
- D.7.6 Where Conexus becomes aware that a Production Device no longer fulfils, or will no longer fulfil the qualification criteria (meaning that the actual information does not correspond to that provided to Conexus via forms set out in the Annex 3) the Registry record for that Production Device will be updated to show that the Production Device no longer qualifies for EECS GOs with effect from and in relation to:
- D.7.6.1 planned changes notified in advance - the date on which such planned changes are due to come into effect;
- or
- D.7.6.2 other changes - as soon as reasonably practicable after becoming aware.
- D.7.7 Registration of a Production Device automatically expires in 5 (five) years. To continue qualifying for EECS GOs, the Production Device must be re-registered. The Account Holder must re-apply for registration for the Production Device before the expiry date of the current registration of the Production Device in scope. The Account Holder must provide the same documents as described in section D.5 Conexus will thereby re-check provided application and documentation and proceed to re-register the Production Device in the Registry as of the effective date on the request or the first day of the next calendar month in which Conexus received the request.

D.8 Audit of Registered Production Devices

This section demonstrates compliance with the following EECS Rules:

E3.3.7	E3.3.8	D5.1.2	
--------	--------	--------	--

- D.8.1 Gas Production Devices are inspected every year to confirm the Input source (injection data) and audited (re-registered) at least every five years.
- D.8.2 The Production Devices that are registered in the Registry can be subject to an unplanned and planned audit.
- D.8.3 The Production Auditor must verify the production method of a Production Device in the manner required by legislation, as well as the Inputs used by it, and prepare a certificate of verification before Guarantees of Origin can be issued for the Output produced by the Production Device.
- D.8.4 In case of using biomethane injection points, the Producer is obliged to maintain an auditable log of deliveries of produced energy for injection into the interconnected gas system in an

EECS DOMAIN PROTOCOL
CONEXUS BALTIC GRID – LATVIA (GAS)

amount that provides assurance to the Production Auditor about the traceability of deliveries. Producer is responsible for ensuring data on cargo movement tracking required by Production Auditor.

- D.8.5 The Production Auditor is obliged to make sure that the Production Device, that is prepared for the registration in the Registry, and to deliver gas to the biomethane injection point, also has a corresponding, auditable cargo movement register.
- D.8.6 Registrant must notify of all changes to the information concerning the Production Device, otherwise production is not eligible for EECS GO issuance. This is particularly important as regards information concerning changes in ownership. If a Production Device does not fulfil the verification requirements, or if the registration information has changed significantly, production is not eligible for EECS GOs issuance until corrective measures have been taken.
- D.8.7 The Production Auditor may perform an on-site audit and inspection of Production Device records. Unplanned audits on Production Devices are conducted on an ad-hoc basis where there is reason to believe that the conditions of registration are no longer fulfilled. Conexus can request the Production Auditor to perform an unplanned audit in the case that Conexus considers it necessary. Refusal to permit access to the Production Device site or records may be considered a breach of the STC and stops issuance of EECS GOs.
- D.8.8 If the Audit identifies material differences from the details recorded in the Registry, the Account Holder must re-apply for registration of the Production Device and EECS GOs will not be issued for respective Production Device before corrective actions have been performed.
- D.8.9 Inspections verify that the Measurement Devices are correctly positioned to measure the Gross Production Output, where applicable, and consumption by Production Auxiliaries needed for calculating the amount of EECS GOs to be issued.
- D.8.10 Inspections confirm the accuracy of the Measurement Devices, where applicable, involved in the calculation of the amount of EECS GOs to be Issued to be acceptable in accordance with the existing regulatory framework and applicable standards.
- D.8.11 Audit of registration information is done by the Production Auditor who is independent of the owner or the Account Holder of the Production Device.
- D.8.12 The Account Holder is always responsible for the accuracy of the information provided to Conexus and the Account Holder must ensure that the relevant information in forms Annex 3, Annex 4, Annex 5 provided to Conexus is certified by the Production Auditor, where applicable.
- D.8.13 The Account Holder is always responsible for reporting changes about the respective Production Device, that has been registered in the Registry, to Conexus.
- D.8.14 Conexus will request the Production Auditor to state that the registration of the Production Device continues to satisfy the criteria above. In case the Account Holder fails to carry out Production Device audits on time - every 5 (five) years from the Production Device registration in the Registry, the permission to submit EECS GO Issuing Requests for that Production Device will be suspended until the valid Registration form is provided to Conexus and information is updated in the Registry.

D.9 Registration Error/Exception Handling

This section demonstrates compliance with the following EECS Rules:

EECS DOMAIN PROTOCOL
CONEXUS BALTIC GRID – LATVIA (GAS)

C2.2.2	E4.2.7		
--------	--------	--	--

- D.9.1 If Conexus detects errors in the Account Holder information, it will correct them without any delay. The relevant Account Holder will be informed of such actions.
- D.9.2 Any errors in EECS GOs resulting from an error in the registered data of a Production Device will be handled in accordance with section E.9.
- D.9.3 Where Conexus determines that the Account Holder is in breach of the Product Rules or determines that a Production Device does not meet Production Device Qualification Criteria for an EECS Product, Conexus shall take such action as is necessary (by informing the Account Holder) to ensure that it is compliant with the EECS Rule's section E3.3.9(b). Such action includes, in the case of material non-compliance by the Account Holder, the withdrawal of registration of the relevant Production Device for the purposes of that EECS Product.
- D.9.4 Conexus informs AIB of such a breach if it could affect the transfer of EECS GOs out of the Registry from the Latvian Registry into the EECS Registration Database of another Member.

E EECS GO SYSTEM ADMINISTRATION

E.1 Issuing EECS GOs

This section demonstrates compliance with the following EECS Rules:

A2.1.1	A2.1.2	C3.1.1	C3.2.1	C3.3.1
C3.4.2	C3.4.4	E3.3.10		O3.1.1

- E.1.1 In accordance with section B.1.3, the EECS GO is the only official gas EECS product in Latvia. Alteration of EECS GOs is not possible.
- E.1.2 EECS GOs shall only be issued for Output:
- E.1.2.1 that fulfils the requirements of the Energy Law of Latvia and the EECS Rules;
 - E.1.2.2 per unit of gas produced by Production Devices from renewable energy sources;
 - E.1.2.3 produced by Production Devices situated in Latvia and having valid registration in the Registry maintained by Conexus;
 - E.1.2.4 produced after the date of Registration of the relevant Production Device;
 - E.1.2.5 produced by Production Devices fulfilling qualification criteria described in section D.5 and for Output fulfilling measurement criteria described in section E.3;
 - E.1.2.6 which has not been and is not being otherwise Disclosed, including by the Issue of any other Certificate of any variety;
- E.1.3 Issuing, transfer and cancellation of EECS GO shall consider each energy unit of the Output only once.
- E.1.4 Issued EECS GOs are valid for transfer 12 (twelve) months at a time. The 12-month validity of EECS GOs starts at the end of the gas month when the gas was produced. From the first day of month following the month during which the Output is produced by Production Device.
- E.1.5 The production period is defined by the gas day for any production injected into the gas networks. EECS GOs are issued for gas month. Gas day means the period from 5.00 to 5.00 UTC the following day for winter time and from 4.00 to 4.00 UTC the following day when daylight saving is applied while gas month means a period beginning on the first day, at 5:00 UTC of each calendar month and ending on the first day, at 5:00 UTC of the next calendar month from 4:00 to 4:00 UTC when daylight saving is applied.
- E.1.6 The face value of issued EECS GO is 1 (one) full MWh, determined by application of the measured gross calorific value to volumetric Output of the Production Device at standard conditions (0°C, 1.023 kPa...).
- E.1.7 EECS GOs are issued for the monthly total Nett Gas Production, expressed in megawatt hours, by a Production Device, evidenced by measured values of the Gross Gas Production collected by an Authorised Measurement Body with reference to Production Device Import and Export Meters, adjusted by meter adjustments and the outcome of any disputes, minus the energy consumed by any of Production Auxiliaries and minus losses due to heating, compression and pumping on the site of the Production Device. In case, where and insofar the for the Production Auxiliaries' energy consumption renewable energy sources has been used and thus EECS GOs

EECS DOMAIN PROTOCOL
CONEXUS BALTIC GRID – LATVIA (GAS)

for renewable energy sources are cancelled for that Input, such energy shall not be deducted from the Gross Gas Production.

- E.1.8 If production auxiliaries consumed renewable electricity or gas in the renewable gas production period, the Producer shall indicate the amount of MWh of renewable electricity or gas used. It can be proven by providing relevant energy consumption information for the auxiliaries and renewable electricity or gas EECS GO cancellation statement to the Conexus. This information shall be submitted to the Conexus by submitting Annex 4 as described in E.3.6 of this Domain Protocol.
- E.1.9 Any kilowatt hours of the Nett Gas Production in excess of full megawatt hours are transferred to the next Production Period.
- E.1.10 If the Nett Gas Production during a gas month is less than one megawatt hour, EECS GO is issued for the gas month during which the Nett Gas Production reaches the threshold of one megawatt hour.
- E.1.11 EECS GOs shall not be issued:
 - E.1.11.1 for the part of Output produced with the energy consumed by Production Auxiliaries;
 - E.1.11.2 in case of any doubts about the accuracy of meter readings and submitted declarations, until Account Holder fully justifies identified discrepancies;
 - E.1.11.3 to an Account Holder which has unpaid invoices towards Conexus at the time when the issuing request of the EECS GOs is submitted;
- E.1.12 Guarantees of origin that are issued for gas, which was produced before Conexus becomes an official AIB Gas Scheme member and before the entry into force of this Domain Protocol are prevented from export through the AIB Hub as they are not qualified as EECS GOs and may not be converted to EECS GOs.
- E.1.13 The life cycle of an EECS GOs encompasses three phases: issuance, transfer, and cancellation and they are described in EECS Rules and AIB website here: <https://www.aib-net.org/certification/introduction/life-cycle>.

E.2 Additional requirements for injection through injection point of remotely produced and transported biomethane

- E.2.1 Where the interconnected gas network contains a biomethane injection point (entry point) for biomethane that is produced remotely and transported by vehicle in the container from the Production Device to the biomethane injection point of the interconnected gas network, EECS GOs related to the concerned biomethane will be treated as described in E.2.2-E.2.9 below.
- E.2.2 The dissemination level in the GOs in accordance with Fact Sheet 20 will indicate “Transferred over Distribution or Transmission System” and it corresponds to the type of gas:
 - For biomethane production the type of gas is ‘methane’ and the GO type is ‘Network compatible gas’
- E.2.3 Each container can transport biomethane for injection to the biomethane injection point from only one Production Device at a time.

EECS DOMAIN PROTOCOL
CONEXUS BALTIC GRID – LATVIA (GAS)

- E.2.4 The Registrant is responsible for auditable and transparent procedure of transporting produced biomethane to the biomethane injection points. It must have all the records as a proof for Production Auditor to check. Producer or Registrant must ensure sufficient relevant records for Production Audit and equipment, transport vehicle and transport process, to prevent fraud or errors for EECS GO issuance.
- E.2.5 The Registrant must ensure the retention of auditable records related to biomethane production and transportation to the biomethane injection point for at least 6 (six) years after production of relevant biomethane in the Production Device.
- E.2.6 The Production Auditor checks and certifies the truthfulness of the information provided by the Producer or Registrant for biomethane production and transportation to the biomethane injection point.
- E.2.7 Any grid injected biomethane must comply with the Rules of Cabinet of Ministers of September 13, 2022 No. 567 “Rules on requirements for the introduction and transportation of biomethane and liquefied natural gas converted into a gaseous state into the natural gas transmission and distribution system” (available here: <https://likumi.lv/ta/id/335532>).
- E.2.8 Conexus ensures the identification of the Producer and Production Device from which the biomethane is delivered for injection into the biomethane injection point.
- E.2.9 In case of suspicion of inconsistency, Conexus has the right to ask a Production Auditor or another third party to perform appropriate checks on the veracity of the information provided by the Registrant or its representative.

E.3 Processes

This section demonstrates compliance with the following EECS Rules:

A.4	C3.4.1	C3.4.3	C3.5.1	C3.5.2
C3.5.3	C4.1.1	C4.1.3	D7.1.2	E.2
	O6.4			

- E.3.1 The EECS GOs shall be issued in a format determined by AIB.
- E.3.2 The Account Holder can request for EECS GO issuing up until 12 months from the production period end date. EECS GOs are then issued with a shorter expiry period which correspond to end of respective Output production month.
- E.3.3 An Auxiliary is an item of the Production Device that is required for the functional operation of that production device that consumes energy.
- E.3.4 No EECS GOs are issued for the part of Output produced with the energy consumed by Auxiliaries. The part of the Output that is consumed by the Production Device, shall be considered as an Auxiliary.
- E.3.5 For any other energy that is fed into the Production Device, the flow of energy that goes into a Production Device is considered to be an Auxiliary.
- E.3.6 The Account holder shall submit electronically (go@conexus.lv) at least Production and Consumption Declaration (Annex 4), duly certified by Production Auditor. Then the Account Holder shall submit Issuing Request of the EECS GOs in the Registry. The Issuing Body shall

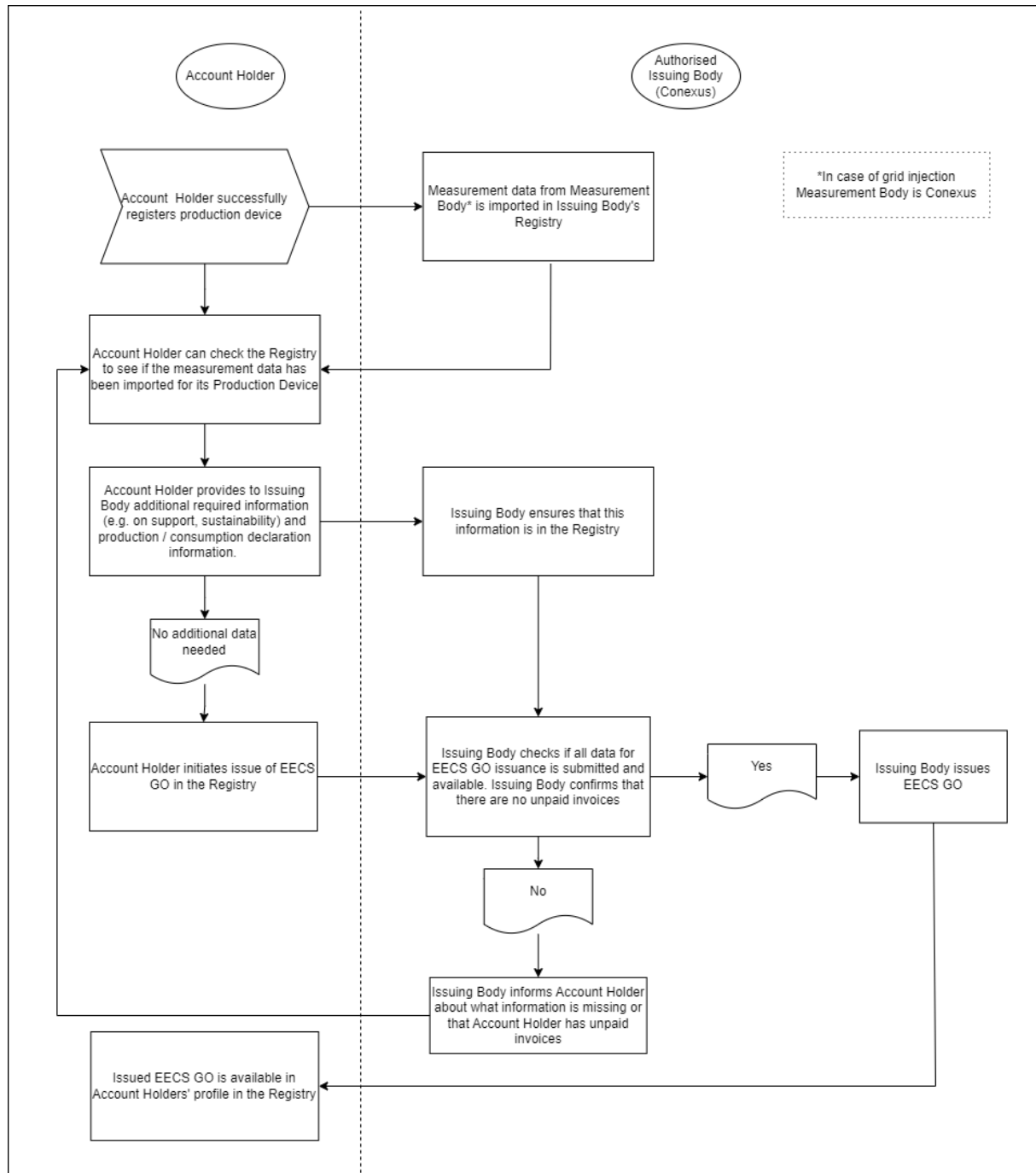
EECS DOMAIN PROTOCOL
CONEXUS BALTIC GRID – LATVIA (GAS)

Issue the related EECS GOs after receipt of the relevant measurement data and Production and Consumption Declaration if it is fulfilled correctly.

- E.3.7 The Account Holder can submit an issuing request described in E.3.6 whenever wanted, within the permitted period described in E.3.2.
- E.3.8 Conexus will assume Issuing request submitted only after receiving data mentioned in E.3.6.
- E.3.9 The Account Holder shall receive information of the issuance of EECS GOs and its details into the Account Holder's Transferable Account in the Registry.
- E.3.10 The Account Holder of a Transferable Account should be treated (as between the Account Holder and that Member) as the owner of the EECS GOs.
- E.3.11 Issued EECS GOs are by default sent to Account Holders default Transferable account. Several sub-accounts can be added by Account Holder itself.
- E.3.12 Conexus shall ensure that its manual information systems and Registry of EECS GOs are able to support audit of all transactions with respect to EECS GOs.
- E.3.13 Conexus shall use in connection with its EECS Scheme (Gas Scheme) the Registry and Transfer Links approved for the purposes of its EECS Scheme.
- E.3.14 Process of EECS GO issuing is described in the following scheme:

EECS DOMAIN PROTOCOL

CONEXUS BALTIC GRID – LATVIA (GAS)



E.4 Measurement

This section demonstrates compliance with the following EECS Rules:

D6.1.2		O6.4	
--------	--	------	--

EECS DOMAIN PROTOCOL
CONEXUS BALTIC GRID – LATVIA (GAS)

- E.4.1 Issuing of EECS GOs for gas is based on Export Meter readings and duly certified Production and Consumption Declarations, as applicable.
- E.4.2 The gas metering equipment installed at Exit Measurement Point shall conform to the requirements laid down in the laws and regulations regarding the procedures for performing approval, primary verification and market supervision of the type of means of measurement, as well as in the laws and regulations regarding metrological requirements for means of measurement. National Law on Uniformity of Measurements: <https://likumi.lv/ta/en/en/id/42562-on-uniformity-of-measurements>.
- E.4.3 The Measurement Body responsible for Export Meter readings for interconnected gas network-injected gas, according to Section 112 paragraph 19 of the Energy Law, is Conexus. Conexus will ensure collection of the Export Meter readings and its automated or manual transfer to the Registry, expressed in MWh, with the accuracy of three decimals. The cumulative accrual of decimals is monitored in the Register.

E.5 Energy Storage

This section demonstrates compliance with the following EECS Rules:

	C3.2.2	C3.6	
--	--------	------	--

- E.5.1 Gas can be stored for any period of time in the storage, but validity time period of EECS GO is limited and described in section C.2.5, as afterwards the lifetime of EECS GOs expire.
- E.5.2 No EECS GOs are cancelled at the Input and issued for the Output of an energy storage device such as Inčukalns underground gas storage, except for the biomethane supplied as fuel gas and used for the injection of biomethane into the Inčukalns underground gas storage facility. The amount of GOs to be cancelled will be determined according to the data provided by the storage operator according to the rules of the use of Inčukalns underground gas storage (available: <https://likumi.lv/ta/en/en/id/317767-regulations-regarding-the-use-of-incukalns-underground-gas-storage-facility>).
- E.5.3 If biomethane is used as fuel gas described in E.5.2, relevant amount of EECS GOs shall be cancelled for this consumption point.

E.6 Conversion Issuance

This section demonstrates compliance with the following EECS Rules:

C3.2.2	C3.5.4(u)	C3.6	
--------	-----------	------	--

- E.6.1 Currently there is no Conversion Issuance in Latvian Domain for gas, but it may be explored more over time. Conversion is not regulated by national legislation.

E.7 Combustion Fuel (e.g., Biomass) Input and Production Devices with multiple energy inputs

This section demonstrates compliance with the following EECS Rules:

EECS DOMAIN PROTOCOL
CONEXUS BALTIC GRID – LATVIA (GAS)

	O6.3.2		
--	--------	--	--

- E.7.1 The Account Holder must fill in the Consumption Declaration (Annex 4) and submit it electronically to (go@conexus.lv).
- E.7.2 The calculation of combustion fuels is verified and approved by a Production Auditor.
- E.7.3 For Production Device reporting the Gross Gas Production injected into the interconnected gas network is measured by Conexus.
- E.7.4 For a Production Device reporting the Gross Gas Production with multiple energy sources, the Account Holder will have to report in detail on the input factors and provide verification of the declaration by the Production Auditor prior to issuing of EECS GOs. The standard calculation set out in the EECS Rules section O6.3.2 is applied. The template of a Production and Consumption Declaration can be found in Annex 4.
- E.7.5 All fuel inputs for production with multiple energy sources (where needed) are separately measured and required to be submitted by the Account Holders in tonnes or 1000 m3 and the lower calorific values of the fuels in MJ/kg or in MJ/m3.
- E.7.6 For production with multiple energy sources in a Production and Consumption Declaration (Annex 4) for each Input, the Energy Input Factor must be specified:
- E.7.6.1 The values of $I_1...I_n$, and where applicable, the values of $M_1, C_1... M_n$ and C_n ; and
- E.7.6.2 the Energy Input Factor L_i for that Input and that period, where L_i is the proportion of the total Output produced during this period by the relevant Input and is calculated as follows:

$$L_i = \frac{I_i}{I_1 + \dots + I_n}$$

Where :

I_i is the energy content of the relevant Energy Input for that Production Device during that period;

$I_1...n$ is the energy content of each Input other than the relevant Input for that Production Device during that period;

In case the Input is a primary energy source in the form of a material input with energy content, I_1 shall be determined as M_1 multiplied by C_1 , I_i shall be determined as M_i multiplied by C_i , ... , and I_n shall be determined as M_n multiplied by C_n ; where:

M_1 - is the mass of the material that is fed into the Production Device as the relevant Energy Input for that Production Device during the relevant period where the Inputs are liquid and/or solid. Where the Inputs are a mixture of gases, their volume shall be used rather than their mass;

C_1 is the average calorific value of the relevant Energy Input for that Production Device during the relevant period;

$M_1...n$ is the mass of each material that is fed into the Production Device as the Input other than the relevant Input for that Production Device during the relevant period where the Inputs are in liquid and/or solid phase. Where the Inputs are a mixture of gases, then the volume shall be used instead of the mass; and

EECS DOMAIN PROTOCOL
CONEXUS BALTIC GRID – LATVIA (GAS)

C1...n is the average calorific value of each Input other than the relevant Input for that Production Device during the relevant period.

E.8 Format

This section demonstrates compliance with the following EECS Rules:

C3.5.4	C3.5.5			O7
O8	C3.4.4	E3.3.10		O3.1.1

- E.8.1 EECS GO shall contain information as described in EECS Rules v.1.8 in section C3.5.4., including information from respective Fact Sheets.
- E.8.2 EECS GOs in addition to mandatory information of EECS Rules v1.8 in section C3.5.4 and O7, may contain optional information on GHG emissions and sustainability, including information on certification body, scheme, audit report and additional information which include reference to the relevant document, that is proof of sustainability of gas produced and other information described in EECS Rules v1.8 Section O8.1.1.
- E.8.3 Additional optional information, as mentioned above in E.8.1. and E.8.2 is submitted by Account Holder electronically sending a Sustainability Declaration (Annex 5) to (go@conexus.lv) before requesting EECS GO issuing in the Registry. After EECS GO is issued, information is immutable.
- E.8.4 EECS GOs shall be Issued in such format as may be determined by AIB and specified in the EECS Subsidiary Document 03 HubCom.
- E.8.5 The following information is recorded on the EECS Certificates (in relation with the optional fields mentioned in EECS C3.5.5, N6.6, O8, procedures are in place to determine the value recorded on the EECS Certificates:

Subject	Name of data field on EECS Certificate	Present on issued certificates? <i>Yes (always) / No / On Request of Producer</i>	Procedure to determine the value of this data field	Reference in EECS Rules
Element of Production Device	Capacity of production element (in addition to nominal capacity of Production Device)	No		C3.5.5 a / O8.1.1
	Date operational of production element (in addition to data operational of Production Device)	No		C3.5.5 a
	Type of production element	No		C3.5.5 a

EECS DOMAIN PROTOCOL
CONEXUS BALTIC GRID – LATVIA (GAS)

Carbon footprint	Quantification of Carbon Footprint (CFP)	On Request of Producer		C3.5.5 b
	Reference to methodology for determining the CFP	On Request of Producer		C3.5.5 b
Production Time interval indicators	Starting time when the Output was produced	On Request of Producer		C3.5.5 c
	End time when the Output was produced	On Request of Producer		C3.5.5 d
Nuclear energy	Quantification of radioactive waste produced per MWh of Output	No		C3.5.5 e
	Reference to methodology for determining the radioactive waste produced	No		C3.5.5 a
Energy Savings [on HEC Certificates]	Amount of primary energy saved in MJ/MWh	On Request of Producer		N6.6.1 b
	Primary energy savings as % of input and output flows of Cogeneration unit	On Request of Producer		N6.6.1 b
GHG savings	GHG emissions saved	Yes		O8.1.1 b
	Method for GHG savings	Yes		O8.1.1 c
	RED GHG saving criteria met Y/N	On Request of Producer		O8.1.1 c
Sustainability criteria	Sustainability criteria met Y/N, legislative requirement reference, certification scheme, certification body,	Yes		O8.1.1 d

EECS DOMAIN PROTOCOL
CONEXUS BALTIC GRID – LATVIA (GAS)

	reference to certificate(s)/PoS			
Calorific value	Calorific value for calculating MWh of Output	On Request of Producer		O8.1.1 e
End-use of gas	Category from Fact sheet End-Use of Gas (only if cancellation is restricted to this end-use)	No		O8.1.1 f
Source-shares	Info on the Inputs, their Source Type, their share in total energy Input	On Request of Producer		O8.1.1 g
Pre-conversion support	In case of Conversion Issuance, Indication of public support granted in relation with energy fed into converting Production Device	No		O8.1.1 i
Composition Purity	Indication of the purity of the composition of the Type of Gas	No		O8.1.1 j
Composition criteria	Reference to criteria to which the gas composition complies	No		O8.1.1 k
Advanced Biomass Feedstock	Y/N	On Request of Producer		O8.1.1 l

E.9 Transferring EECS GOs

This section demonstrates compliance with the following EECS Rules:

C5.1.1	C5.1.3	C5.1.6	
--------	--------	--------	--

- E.9.1 An Account Holder will get a secure electronic access to their Account as stated in section D.1.5 to make transfers of EECS GOs to another Account in the Registry (national) or to another EECS Registration Database in another Domain through the AIB Hub (international).

EECS DOMAIN PROTOCOL
CONEXUS BALTIC GRID – LATVIA (GAS)

- E.9.2 Only persons duly authorized by the Account Holder may request the transfer of EECS GOs from that Account Holder's Transferable Account. Authorized persons must be identified on the account application form (Annex 2). Authorized persons can also be added by the root user(s) of that Account Holder.
- E.9.3 In accordance with Latvian law, from Latvia EECS GO Registry there can be sent GOs that fulfils EECS GOs requirements and can be received only EECS GO compatible certificates.
- E.9.4 The initiation of transfers is done in the Registry by the selling Account Holder. The transfer form shall be filled out by the selling Account Holder (whether it is the Producer itself or an Account Holder with power of attorney, or any other Account Holder that has EECS GOs and wants to do a transfer) containing the following data:
 - E.9.4.1 The amount of EECS GOs to be transferred;
 - E.9.4.2 Domain of the receiving Account Holder;
 - E.9.4.3 Receiving Account Holder.
- E.9.5 The transfer of EECS GOs and the confirmation of that transfer is automated. After the Account Holder has initiated the transfer, the Registry instantly displays a message of whether or not the initiation has been successful. The EECS GOs are automatically transferred to the receiving account if the initiation of the transfer is successful. If the initiation of the transfer is not successful, the EECS GOs do not leave the Account of the original Account Holder. In transfers between Accounts located in different Registries, the success of the transfer is subject to the verification process of the AIB Hub and the receiving Registry. When EECS GOs are in transit they are not available for another transfer. If the transfer is not successful, the EECS GOs return to the Account of the original Account Holder.
- E.9.6 EECS GOs that have been cancelled or expired are not available for transfer.
- E.9.7 Once an EECS GO has been held in the registry of a non-Hub User, it may not be transferred through the Hub. Conexus is only allowed to use the Hub when transferring EECS GOs to another Hub User, excluding other means of transfer or separate arrangements in this respect.
- E.9.8 Exports for use in another Domain (for Ex-Domain Cancel) are handled as cancellations, where the beneficiary of the cancellation is located in another Domain or country, that is not connected with AIB Hub and respective Issuing body has signed agreement with Conexus for export/import in another domain (for Ex-Domain Cancel) or locally from another Domain.
- E.9.9 Import for use from another Domain is handled outside the Registry for EECS GOs (see also E.11.3), information about imports of EECS compliant GOs is saved in a separate database. Import from another Domains is allowed if the Domain or country is not connected with AIB Hub and respective Issuing body has signed agreement (AIB standard agreement form to be used) with Conexus for ex-domain export/import.
- E.9.10 There are no restrictions for transfer via AIB Hub of EECS GOs for renewable gas, except for hydrogen, since Conexus is not appointed as hydrogen EECS GO issuing body by national legislation.
- E.9.11 The Transfer Criteria are that the Account Holder in relation to which a Transfer Request is made shall be obliged to retain all records to which they have had access relating to any EECS GO which is the subject of a Transfer Request for not less than 6 (six) years after the Cancellation of such EECS GO.

EECS DOMAIN PROTOCOL
CONEXUS BALTIC GRID – LATVIA (GAS)

E.10 Administration of Malfunctions, Corrections and Errors

This section demonstrates compliance with the following EECS Rules:

C5.1.7	C8.4.1	C8.4.2	C8.4.3	C8.5.1
D9.1.2				

- E.10.1 Once issued, the EECS GO or details of an EECS GOs cannot be altered or deleted, except to correct an error.
- E.10.2 Conexus has the right to perform corrective actions such as the transfer of EECS GOs in the Registry where EECS GOs have been erroneously issued or transferred.
- E.10.3 Conexus has the right to perform corrective actions such as the withdrawal of EECS GOs from an Account in the Registry where EECS GOs have been erroneously issued. Conexus has the right to recover the cost of securing the agreement of another Account Holder to the Withdrawal of Certificates of the same type from that other Account Holder's Transferables Account, where the EECS GO is not in the Transferables Account of that Account Holder, so that, as far as reasonably practicable, EECS GOs are withdrawn with an amount and a financial value which make good the discrepancy.
- E.10.4 If an error occurs in the measurement data on which EECS GOs are created, Conexus will correct this error. If EECS GOs are wrongly issued, i.e., a larger quantity, and traded, the error will be corrected in future, issuing a smaller amount of EECS GOs in the next period.
- E.10.5 Where it is impossible to transfer for technical reasons, this can be overcome by cancelling EECS GOs for use in another domain, subject to an agreement between Conexus and the importing Issuing Body.
- E.10.6 Conexus shall correct all errors in or with respect to the EECS GOs in question, provided that such EECS GOs have not yet been transferred from that Transferables Account to another account. In case the EECS GOs have been transferred, Conexus will take measures to annul any unjust enrichments of any involved party.
- E.10.7 Conexus may alter an EECS GO held in its Registry so as to rectify an error which occurred prior to its transfer into the Account in which it is held at such time, provided that alteration is needed and justifiable, while notifying relevant Account Holder.
- E.10.8 In the case where the EECS GOs are no longer in the Latvian domain, or in the case where erroneous EECS GOs are transferred to the Latvian domain from another Domain, Conexus will cooperate with other Issuing Bodies to withdraw or correct the erroneous EECS GOs.
- E.10.9 An Account Holder or market participant involved in a transaction with an Account Holder from the Latvia Domain can report an issue by submitting identified malfunctions, errors or requested corrections via e-mail to (go@conexus.lv). If possible, Conexus will resolve the issue in 5 (five) business days and inform the Account Holder of the resolution. If the issue can not be resolved within 5 (five) business days Conexus, will respond to the e-mail to inform how this issue will be tackled and the estimated time to resolve it.
- E.10.10 Except in case of fraud, no rectifications may take place more than 18 (eighteen) months after issuing of EECS GO.

EECS DOMAIN PROTOCOL
CONEXUS BALTIC GRID – LATVIA (GAS)

E.11 End of Life of EECS GOs – Cancellation

This section demonstrates compliance with the following EECS Rules:

C5.2.3	C6.1.1	C7.1.1	C7.2.1	C7.2.2
C7.2.3	C7.3.1	E3.3.10		O3.1.1

- E.11.1 Cancellation means using EECS GO and removing it from circulation. EECS GOs can be cancelled by/for a final customer. This cancellation allows the final customer to state that they have used this unit of energy.
- E.11.2 Once cancelled, EECS GOs cannot be moved to any other account, and so they are no longer tradable (transferable). Expired EECS GO are not valid for cancellation or transfer as the Registry automatically expires EECS GOs according to the Expiry rules described in E.11.
- E.11.3 EECS GOs may be cancelled for use in an other Domain provided that the transfer of such EECS GOs is not possible to the other Domain through the AIB Hub, and there is a Cancellation Agreement in place with the Scheme Member of that other Domain. Such Cancellation Agreements require the provision by the Cancelling Scheme Member to the Scheme Member of the other Domain of statistical information concerning Cancelled EECS GOs and the inclusion on any related Cancellation Statement of the identity of the Domain, Account Holder and purpose for which the EECS GOs were Cancelled.
- E.11.4 EECS GO can be cancelled for use in countries that are not connected to AIB Hub as ex-domain cancellations.
- E.11.5 Account Holders who hold EECS GOs in the Registry, can perform cancellations by executing the transaction in the Registry. The Account Holder must specify the information on relevant Production Device, relevant number of EECS GOs, relevant production period, beneficiaries of Cancellation (type – energy supplier, final customer, other), identity of beneficiary, location of consumption, period during which the associated energy has been consumed and cancellation purpose. The Account Holder chooses amount of EECS GOs to cancel.
- E.11.6 The cancellation of EECS GOs is automated using the cancellation functionality in the Registry. An EECS GOs can only be cancelled once and when the EECS GOs have been cancelled they are taken out of circulation and are not available for transactions. Cancelled EECS GOs are removed from the transferable account by changing their status to “cancelled”; they do not appear in any Account of the Registry after the Cancellation. The Account Holder performing the cancellation has full access to see the details of the cancellation process in the Registry or Account Holder can have an official Cancellation Statement from Conexus (Annex 8).
- E.11.7 Having performed a cancellation, the Account Holder receives confirmation of a successful or failed cancellation process instantly in the Registry.
- E.11.8 Each month Conexus will provide the Secretary General of AIB with a statement of the number of EECS GOs cancelled as in Annex 8. Eligible for cancellation are only EECS GOs from renewable sources.

E.12 End of Life of EECS GOs – Expiry

This section demonstrates compliance with the following EECS Rules:

EECS DOMAIN PROTOCOL
CONEXUS BALTIC GRID – LATVIA (GAS)

C5.2.3	C6.1.1c	E6.2.1h	
--------	---------	---------	--

- E.12.1 EECS GOs expire 12 months after the end of the related production period during which the relevant energy unit (Output) is produced.
- E.12.2 EECS GOs which have expired are no longer valid for transfer. The expiry-warning period is set to 30 (thirty) days in the Registry. If the Account Holder does not react by cancelling the EECS GOs or transferring (selling) the EECS GOs to someone who then cancels them, then the EECS GOs will expire. According to Latvian Energy Law, it is possible after expiry of 12 (twelve) months, still cancel EECS GO, not exceeding 18 (eighteen) months overall. No operations will be possible on these EECS GOs after 18 (eighteen) months.

E.13 End of Life of EECS GOs – Withdrawal

This section must demonstrate compliance with the following EECS Rules:

C5.2.3		C6.1.1	C8.2.1	
--------	--	--------	--------	--

- E.13.1 EECS GOs which have been withdrawn are no longer valid for transfer.
- E.13.2 Withdrawal can be done to EECS GOs that have been issued in error. Conexus may Withdraw or alter an EECS GO held in the Registry to give effect to an agreement reached with an EECS Market Participant (Registrant) under provisions of its Standard Terms and Conditions that meet the criterion at EECS Rule Section E7.1.1.
- E.13.3 Conexus may withdraw EECS GOs held in an Account on its Registry at the request of the Account Holder of that Account, or otherwise in accordance with the provisions of the EECS gas scheme as described in section E.10.
- E.13.4 Conexus may withdraw EECS GOs issued for energy produced in Production Device, that does not fulfil requirements set in D.8.1.

F ISSUER'S AGENTS

F.1 Production Auditor

This section must demonstrate compliance with the following EECS Rules:

None directly			
---------------	--	--	--

- F.1.1 The Production Auditor verifies and approves information which is provided in forms (Annex 2, Annex 3, Annex 4, Annex 5). Production Auditors use industry best practices and also include on-site inspection. Production Auditor, where applicable, follows EECS Rules, as well as sections B.3, C.2, D.5, D.8, E.2, E. of this Domain Protocol.
- F.1.2 Charges for Production Device services are concluded based on mutual agreement. Conexus has no responsibility in relation to Production Auditor charges for services. Requirements and link to the list of the Production Auditors is available in Annex 1.

F.2 Production Registrar

This section must demonstrate compliance with the following EECS Rules:

None directly			
---------------	--	--	--

- F.2.1 Conexus acts as the Production Registrar and is responsible for assessing applications to register Production Devices for the purposes of the relevant EECS Product and national law.

F.3 Measurement Body(/ies)

This section demonstrates compliance with the following EECS Rules:

H			
---	--	--	--

- F.3.1 The role of the Measurement Body is described in B.3.4 and its functions in Latvian Gas Domain described under section E..
- F.3.2 The contact information of the Measurement Body for Network-compatible renewable gas, that is injected in the interconnected gas transmission or distribution network is available on Annex 1.

G ACTIVITY REPORTING

G.1 Public Reports

This section demonstrates compliance with the following EECS Rules:

E3.3.4	HPA section 14.2		
--------	------------------	--	--

- G.1.1 Information about statistics on issued EECS GOs is published on Conexus website. Conexus ensures the confidentiality of the information provided by the EECS Market Participants and compliance with personal data legal protection requirements in the publication of all information.

G.2 Record Retention

This section demonstrates compliance with the following EECS Rules:

A12.1.1	C5.1.2	D8.1.2	
---------	--------	--------	--

- G.2.1 Conexus shall retain all records to which Conexus has had access to, relating to any EECS GOs on Conexus Registry for not less than 6 (six) years after EECS GO's Cancellation or Expiry or for a period that may be required by applicable national legislation.

G.3 Orderly Market Reporting

This section demonstrates compliance with the following EECS Rules:

E4.2.5	E4.2.6	E4.2.7	
--------	--------	--------	--

- G.3.1 Conexus shall inform the AIB of any relevant changes in legislation regarding the EECS scheme concerning the Output in Latvia, especially if such changes are related to this Domain Protocol.
- G.3.2 Conexus shall enforce the rules in relation to any act of non-compliance. Conexus shall provide all required information to AIB to resolve or investigate such action.
- G.3.3 If Conexus becomes aware that the EECS Market Participant (Account Holder) fails to comply with the EECS GO Rules or STC to the extent that such non-compliance breaches Competition Law, or any applicable law governing the conduct of financial markets, then Conexus shall report it to relevant national authority. Conexus shall report to AIB of such incidents to extent that it does not breach Conexus duty of confidentiality to the relevant EECS Market Participant.
- G.3.4 If Conexus determines that an EECS Market Participant is in breach of the Product Rules or determines that a Production Device does not meet Production Device Qualification Criteria for an EECS GO, then Conexus shall:

EECS DOMAIN PROTOCOL
CONEXUS BALTIC GRID – LATVIA (GAS)

- G.3.4.1 take action to secure that EECS GO issuance is not done for Production Devices that fail to meet Product Rules and Production Device Qualification Criteria. Such action to include, in a case of material non-compliance by the EECS Market Participant, the withdrawal of registration of the relevant Production Device for the purposes of that EECS Product;
- G.3.4.2 notify the AIB of such breach where Conexus is of the reasonable opinion that such breach could affect the transfer of EECS GOs out of Conexus Registry into the EECS Registration Database of another Member.

H ASSOCIATION OF ISSUING BODIES

H.1 Membership

This section demonstrates compliance with the following EECS Rules:

C2.2.6	C2.2.7		
--------	--------	--	--

- H.1.1 The AIB brings together the issuing bodies of European energy certificate schemes. The AIB promotes the use of a standardised system, based on a harmonised environment, structures and procedures in order to ensure the reliable operation of European energy certificate systems. With its independent and peer reviews, and its periodic audits, the AIB provides a robust framework for reliable and fraud-resistant EECS GO systems. Among others, it can also act by suspending transfers through the Hub. Membership of AIB facilitates mutual recognition of GOs across Europe.
- H.1.2 In case Conexus ceases to be a Scheme Member of an EECS Gas Scheme, it shall revise its Registry so that every Production Device registered therein ceases to be registered for the purposes of EECS GOs. GO issuing under EECS would stop, and EECS GOs would remain tradable only until Expiry.
- H.1.3 In case Conexus ceases to be the Authorised Issuing Body for EECS GOs, it shall revise its Registry so that each Production Device in the Domain ceases to be registered for the purposes of EECS GOs, it shall stop issuing EECS GOs and after a transitional period the Registry shall be taken offline.
- H.1.4 Conexus shall ensure that the Domain Protocol secures that the Product Rules for the EECS GOs and that it complies with the EECS Rules established for the EECS Gas Scheme in relation to the relevant Output.

H.2 Complaints to the AIB

This section must demonstrate compliance with the following EECS Rules:

None directly	(J1.1.2)		
---------------	----------	--	--

- H.2.1 An Account Holder is allowed to notify the Secretary General of AIB in writing in case:
- an Authorised Issuing Body in relation to an EECS GOs is in breach of any of the provisions of Product Rules in relation to EECS GO;

EECS DOMAIN PROTOCOL
CONEXUS BALTIC GRID – LATVIA (GAS)

- b. any Product Rules do not comply with the relevant provisions of the EECS Rules, and evidence is provided substantiating such allegation, and that the Authorised Issuing Body has been given adequate opportunity to respond to such allegation.

The General Secretary of AIB shall invite the relevant Authorised Issuing Body to respond to the allegation.

I CHANGE CONTROL

I.1 Complaints to Conexus

This section must demonstrate compliance with the following EECS Rules:

None directly			
---------------	--	--	--

- I.1.1 Conexus shall endeavour to respond with remarks indicating a possible resolution to a complaint received via e-mail (go@conexus.lv) as soon as possible, but no later than within a period of 1 (one) month. Treatment of the complaint and disputes shall be done in accordance with the Latvian national legislation.

I.2 Disputes

This section must demonstrate compliance with the following EECS Rules:

None directly			
---------------	--	--	--

- I.2.1 All disputes and disagreements between the Parties (Account Holder and Conexus) of the Contract (STC) shall be resolved by means of mutual negotiations. In the event of a dispute the Party referring to the existence of the dispute shall submit a written notice to the other Party, containing a description of the dispute, the offered solution to the dispute and a person or persons authorised to solve the issue related to the dispute on behalf of the Party.
- I.2.2 If the dispute cannot be resolved within a period of 1 (one) month (unless the Parties have agreed upon a different deadline), it shall be finally settled pursuant to the procedure laid down in the applicable laws and regulations of the Republic of Latvia.

I.3 Change Requests

This section demonstrates compliance with the following EECS Rules:

E4.2.3	E6.2.1e	L5.1.1	
--------	---------	--------	--

- I.3.1 An EECS Market Participant may propose a modification to this Domain Protocol.
- I.3.2 Proposal for the modification of this Domain Protocol shall include a detailed description, including an exact specification of any proposed modification of this Domain Protocol and be sent in writing to Conexus (go@conexus.lv).
- I.3.3 On receipt of such a request for the modification of this Domain Protocol, Conexus shall:

EECS DOMAIN PROTOCOL
CONEXUS BALTIC GRID – LATVIA (GAS)

- I.3.3.1 Respond to the request within 1 (one) month, describing the procedures to be followed, and estimating when a reply can be expected;
- I.3.3.2 Consult with the other EECS Market Participants within Latvia and where relevant with AIB or other AIB Members;
- I.3.3.3 Decide whether the request and its consequences are in Conexus opinion reasonable;
- I.3.3.4 Inform the EECS Market Participants within Latvia about the outcome of the decision provided, that the request leads to modifications to this Domain Protocol or if it is otherwise considered important to disseminate.
- I.3.4 Conexus may make such modifications to this Domain Protocol as are in Conexus opinion necessary for the effective, efficient and transparent operation of the market.
- I.3.5 Any modifications to this Domain Protocol are subject to approval by the AIB (Assessment Panel in accordance with Section L5.2.1 of EECS Rules Release 8 v1.8 and the prior consent of the Gas Scheme Group in accordance with the provisions of Section L5 of EECS Rules) that such changes do not conflict with the Principles and Rules of Operation of the Association of Issuing Bodies (AIB) for the European Energy Certificate System (EECS).
- I.3.6 Implementation of modifications will be notified by e-mail to the EECS Market Participants and will take effect on publication of the documentation on the website www.aib-net.org and Conexus www.conexus.lv.

EECS DOMAIN PROTOCOL
CONEXUS BALTIC GRID – LATVIA (GAS)

ANNEX 1 CONTACTS LIST

AUTHORISED ISSUING BODY/REGISTRY OPERATOR/REGISTRY SUPPORT

COMPANY NAME	AS “Conexus Baltic Grid”
CONTACT PERSON	Name Surname
DEPARTMENT	Department
ADDRESS	Stigu iela 14, Riga, LV
PHONE NUMBER	+371 67087900
E-MAIL ADDRESS	go@conexus.lv
WEBSITE	www.conexus.lv

PRODUCTION AUDITOR

A Production Auditor can be an auditor that has valid accreditation issued from the Latvian National Accreditation Bureau (hereinafter - LATAK) in the field of biomethane production. A list of possible Production Auditors is available on the LATAK website www.latak.gov.lv/. Accredited Production Auditor may be found by typing keyword “biometāns” (biomethane) in search of LATAK list here: <https://ai.latak.gov.lv/index.php?lang=en>

For additional questions please contact LATAK or any relevant energy production auditor, to express your interest.

**MEASUREMENT BODY FOR NETWORK-COMPATIBLE RENEWABLE GAS (INJECTED IN THE
INTERCONNECTED GAS TRANSMISSION OR DISTRIBUTION NETWORK)**

COMPANY NAME	AS “Conexus Baltic Grid”
ADDRESS	Stigu iela 14, Riga, LV
PHONE NUMBER	+371 67087900
E-MAIL ADDRESS	go@conexus.lv
WEBSITE	www.conexus.lv

EECS DOMAIN PROTOCOL
CONEXUS BALTIC GRID – LATVIA (GAS)

ANNEX 2 ACCOUNT APPLICATION/AMENDMENT FORM

Account Application/Amendment Form

Account	
Application purpose	<input type="checkbox"/> New account <input type="checkbox"/> Amend account <input type="checkbox"/> De-register account
Company name/ name, surname	
VAT code (Business ID)/Person ID	
Legal address (country, city, street, postal code)	
Bank name	
Bank SWIFT	
Bank account No	
Organization type	<input type="checkbox"/> Biomethane producer <input type="checkbox"/> Gas supplier/trader <input type="checkbox"/> GO Trader <input type="checkbox"/> Other (specify) _____
Enclosed (only for New account application):	<input type="checkbox"/> A document attesting that the applicant has registered the commercial activity in accordance with the laws and regulations of the relevant country* <input type="checkbox"/> A document attesting to the representation if the application is signed by a person who is not a member of an administration body of the applicant* <input type="checkbox"/> Document attesting that an insolvency procedure of the applicant has not been announced, the economic activity of the applicant is not suspended or the applicant is not liquidated* * If the document is available in an official gazette or a State public register, the website shall be indicated.
Trading Scheme	EECS GO
Account Holder Root user	
Action	<input type="checkbox"/> New Root user <input type="checkbox"/> Amend existing Root user
Name	
Surname	

EECS DOMAIN PROTOCOL
CONEXUS BALTIC GRID – LATVIA (GAS)

E-mail	
Mobile phone number	
Additional information, comments, contact person (Optional)	

Signature*

** Document is signed with a secure digital signature. Date shown on the timestamp.*

By signing this form, you give consent for your data to be processed in the Registry.

EECS DOMAIN PROTOCOL
CONEXUS BALTIC GRID – LATVIA (GAS)

ANNEX 3 DEVICE REGISTRATION FORM

Application form for renewable gas Production Device registration or amendments

Account Holder	
Account Holder name	
Account Holder VAT code (Business ID)/Person ID	
Production Device	
Application purpose	<input type="checkbox"/> New Production Device <input type="checkbox"/> Amend information on registered Production Device <input type="checkbox"/> De-register Production Device
Production Device (object) name	
Operational date of Production Device	
Installed capacity (kW)	
Address of Production Device (country, city, street, postal code)	
Coordinates (longitude, latitude)	
The first date of commissioning	
Grid connection	<input type="checkbox"/> TSOs grid <input type="checkbox"/> DSOs grid <input type="checkbox"/> Biomethane injection point, transported by vehicle to the TSO or DSO grid
Metering ID (object EIC and metering point EIC).	
Fuel (-s)*	
Technology*	
Trading Scheme	EECS GO

EECS DOMAIN PROTOCOL
CONEXUS BALTIC GRID – LATVIA (GAS)

*For fuel and technology input use EECS Rules Fact Sheet 5 "TYPES OF ENERGY INPUTS AND TECHNOLOGIES" (<https://www.aib-net.org/eeecs/fact-sheets>)

The State aid					
Production Device received Investment support			<input type="checkbox"/> Yes or <input type="checkbox"/> No If Yes, fill the table below		
Production Device receives Production support			<input type="checkbox"/> Yes or <input type="checkbox"/> No If Yes, fill the table below		
Governor of Support scheme	Support scheme type (Production/ Investment support)	Purpose of the State aid	Support scheme number	Tool	Amount, EUR (In case of Investment support)

The Account Holder is informed that to the extent necessary for the fulfilment of the obligations of the Agreement (between AS "Conexus Baltic Grid" and the Market Participant) AS "Conexus Baltic Grid" processes the technical data of the Market Participant's Production Device, including their request, receipt from a third party, transfer to third party and the exchange of data. Information on the processing of personal data is available in the privacy statement on the website of AS "Conexus Baltic Grid" (<https://www.conexus.lv/privatuma-pazinojums>).

Account Holder Signature**

Production Auditors Signature**

** Document is signed with a secure digital signature. Date shown on the timestamp.

EECS DOMAIN PROTOCOL
CONEXUS BALTIC GRID – LATVIA (GAS)

ANNEX 4 PRODUCTION AND CONSUMPTION DECLARATION

1.	Name of the Account Holder	
2.	VAT code (Business ID) of the Account Holder, Registration Account number	
3.	Name of the Production Device	
4.	GSRN number of the Production Device a)	
5.	Production and consumption time Start date (dd.mm.yyyy)	
6.	Production and consumption time End date (dd.mm.yyyy)	
7.	Production energy source input description (Level 4), energy source full code, (%) ^{b)}	
8.	Gross produced energy (MWh) ^{c)}	
9.	Auxiliary consumption (including energy consumed for digestate handling and energy consumed for compression of the Output for injection in the interconnected gas network) (MWh)	
10.	Auxiliary consumption from renewable electricity or gas (including energy consumed for digestate handling and energy consumed for compression of the Output for injection in the interconnected gas network) (MWh) ^{d)}	
11.	Auxiliary consumption (proportion of gross energy) (%)	
12.	Auxiliary consumption from renewable electricity or gas (including energy consumed for digestate handling and energy consumed for compression of the Output for injection in the interconnected gas network) (proportion of gross energy) (%) ^{d)}	
13.	Energy Input Factor <i>L</i> (Must be filled only for a Production Device using more than one Input) ^{e)}	
14.	[Shall be filled only in case of using biomethane injection point] The Production Auditor certifies the	<input type="checkbox"/> Cargo delivery to biomethane injection point is reliable

EECS DOMAIN PROTOCOL
CONEXUS BALTIC GRID – LATVIA (GAS)

	reliability of biomethanes' cargo delivery	
15.	[Shall be filled only in case of using biomethane injection point]	<input type="checkbox"/> The renewable character of the injected quantities of gas was not nor will be disclosed elsewhere than as being injected in the respective injection point

a) GRSN number is number, that is automatically assigned in the Registry at the time of registration of the Production Device, for example, 6464646464646464

b) For fuel and technology input use EECS Rules Fact Sheet 5 "TYPES OF ENERGY INPUTS AND TECHNOLOGIES" (<https://www.aib-net.org/eees/fact-sheets>)

c) Measurement data for gas injected in interconnected gas network must be requested by Account Holder to Measurement Body (Conexus). Request must be sent to email (go@conexus.lv), indicating Account Holder, Production Device name, time period for which injection (gross produced biomethane) data are required. Over time these data will be electronically available to the producer in Conexus client portal.

d) If renewable electricity or gas was used in production, please indicate amount of MWh used, and add renewable electricity or gas EECS GO cancellation statement as attachment to this declaration.

The sum of produced and consumed energy must be 100% (example: Nett Energy = Gross produced energy – Auxiliary consumption – Auxiliary consumption from RES electricity or gas)

e) In case energy was produced from one Input, Energy Input Factor is equal to 1 (one).

Account Holder Signature*

Production Auditor Signature*

**** Document is signed with a secure digital signature. Date shown on the timestamp.**

EECS DOMAIN PROTOCOL
CONEXUS BALTIC GRID – LATVIA (GAS)

ANNEX 5 SUSTAINABILITY DECLARATION

Name of the Account Holder	
VAT code (Business ID) of the Account Holder	
Name of the Production Device	
GRSN number of the Production Device ^{a)}	
Calorific value (For gaseous certificates, Energy Carrier being “EnergyGas”, the Calorific Value relates to the Output) (MJ/m³) ^{b)}	
Calorific value lower (For gaseous certificates, Energy Carrier being “EnergyGas”, the Calorific Value relates to the Output) (MJ/m³) ^{b)}	
Are GHG emissions savings criteria met? ^{b)}	<input type="checkbox"/> Yes <input type="checkbox"/> No
GHG emissions produced (kg CO EQ per MWh) ^{b)}	
Are Sustainability criteria met? ^{b)}	<input type="checkbox"/> Yes <input type="checkbox"/> No
Sustainability certification body ^{b)}	
Sustainability scheme (example, ISCC, REDcert...) ^{b)}	
Web link to the sustainability audit report ^{b)}	
Sustainability additional information ^{b)}	
Additional information attachments ^{b)}	

^{a)} GRSN number is number, that is automatically assigned in the Registry at the time of registration of the Production Device, for example, 6464646464646464

^{b)} Optional fields, filled on a voluntary basis, information can be added as optional fields to the EECS GO. “Sustainability criteria” in the meaning of Directive (EU) 2018/2001 of the European Parliament and of the Council of 11 December 2018 on the promotion of the use of energy from renewable sources (RED II), Article 29

Account Holder Signature*

Production Auditor Signature *

* Document is signed with a secure digital signature. Date shown on the timestamp.

EECS DOMAIN PROTOCOL
CONEXUS BALTIC GRID – LATVIA (GAS)

ANNEX 6 EXAMPLE OF EECS GO IN THE REGISTRY

Certificate details

Certificate information

Trading scheme

00 Energy Gas

Issuing date

2023-04-10

Production period start date

01/02/2023

Certificate number start

642024065500000000000002083

Remark

Production support

Investment support description

Investment Support

Standard

EECS energy gas

Volume

100 MWh

Production period end date

19/04/2023

Certificate number end

642024065500000000000002182

Production support description

Plant

Plant name

KuDevice

ZIP code

LV-1011

Country

Latvia

Longitude E

Plant GSRN

64202406550000000

City

Riga

Latitude N

Coordinate code

Energy source and technology

Energy source code

F1010201

Technology code

TG00000

Energy source name

Renewable/solid/industrial and commercial waste/Biogenic

Technology name

Biogas/Landfill gas collection

Issuer

Issuing body

AT Conexus Baltic Grid

Issuing country code

LV

Issuing body code

05

Complant authority code

LV02

Certificate owner

Domain code

LV-GAS

Organization ID

55X38CD7N

Account number

64202406550000000

Domain name

Latvia Gas

Organization name

Taste RaBims

Account name

Default Account

Attributes

Calorific value

Calorific value lower

Calorific value lower unit

Calorific value type

Calorific value unit

Higher

Conversion tag

Capacity gas production

Conversion tag

10000

Gas type

Dissemination level

Y10101 Methane

4 Transferred over any other network than a Distribution or Transmission System or Closed Distribution System

GHG emissions produced unit

GHG emissions produced

Kg CO2 EQ per MWh

GHG emissions savings criteria met?

Product type type

Yes

Driver

Storage tag

Sustainability additional info

50101 Energy not released from storage

TEST

Sustainability audit report

Sustainability certification body

Sustainability criteria met?

Yes

Sustainability scheme

Product type

Source

EECS DOMAIN PROTOCOL
CONEXUS BALTIC GRID – LATVIA (GAS)

ANNEX 7 EXAMPLE OF PRODUCTION DEVICE VIEW IN THE REGISTRY

KcDevice Testa iekārta
GSRN : 643002406655000070
Status : Updated

GENERAL

ORGANIZATION

METER

LICENSE

General

Start date time *

01/02/2022 0.00

End date time

day/month/year hour.minute

Production device name *

KcDevice Testa iekārta

National ID

Description

Declaration types

ENERGY_SOURCE_DECLARATION ×
LICENSE_DECLARATION ×

Production device GSRN *

643002406655000070

Address

Street

Stigu street 14

Zip code *

LV-1021

City *

Rīga

Country *

Latvia

Coordinates

Coordinate code

Select

Latitude N

Longitude E

Grid

☒ Grid connected

Grid area code

TSO - Transmission

Description

Technology

Technology *

TG30000 - Biogas/Landfill gas collection

Energy source

Energy sources *

F01010201 - Renewable/Solid/Industrial and commercial waste/Biogenic ×
F01010500 - Renewable/Solid/Biomass from agriculture ×

Additional information ⓘ

Internal comment ⓘ

Edit

GENERAL

ORGANIZATION

METER

LICENSE

Organization

Current user organization should be as registrant for the current day.

Role *	Organization *	Start date time *	End date time
Registrant	55X538CD7N - Testa Režims	01/02/2022, 0.00	

EECS DOMAIN PROTOCOL

CONEXUS BALTIC GRID – LATVIA (GAS)



Meter

Note: Minimum one meter must be filled for a production device. The start date and end date must be within the responsible registrant period.

Grid reference *	Start date time *	End date time	Meter formula operator *	Meter coefficient *	Description
MakTest 2 19042023	01/02/2022, 0.00		+	1	



Energy Gas EECS V80(01/02/2022, 0.00 -)

License type *

Energy Gas EECS V80

Trading scheme *

GO Energy Gas

Allocation factor (%) *

100,000%

Earmark *

Investment and production support

Investment support description *

Investment Support

Production support description

Production Support

Start date time *

01/02/2022 0.00

End date time

day/month/year hour.minute

Operational date *

01/05/2005

OWNERSHIP

Total ownership percentage must be 100%.

Organization and account issuing account number relationship: If owner organization is selected the issuing account numbers will be loaded based on owner organization and if both owner and aggregated organization are selected, the issuing account numbers will be loaded based on aggregated organization.

Ownership percentage (%) *

50,000%

Owner organization *

55XE1BF07K - Grexel Test 2

Aggregated organization

Issuing account number *

Select

Ownership percentage (%) *

50,000%

Owner organization *

55XABC0590 - Grexel Test 3

Aggregated organization

Issuing account number *

Select

ATTRIBUTES

Conversion tag *

C01 No Conversion

Storage tag *

S0101 Energy not released from storage

Product type *

Source

Product type type *

Driver

Capacity gas production (kW) *

10 000,000

Dissemination level

Gas type *

Y0101 Methane

Calorific value

Calorific value type *

Higher

Calorific value unit

Calorific value lower

Calorific value lower unit

GHG emissions savings criteria met?

GHG emissions produced

GHG emissions produced unit

Sustainability criteria met?

Sustainability certification body

Sustainability scheme

Sustainability audit report

Sustainability additional info

Additional info

ANNEX 8 EECS GO CANCELLATION STATEMENT

Example of EECS GO cancellation statement in the Registry:

Cancellation Statement

This cancellation statement acts as a receipt for the certificates listed below and for the purpose shown. With this Cancellation Statement, released on the Transaction Date, the indicated certificates are no longer tradable. Onward sale of this Cancellation Statement is prohibited. The environmental qualities of the associated energy have been consumed and this Cancellation Statement and these certificates may not be transferred to any party other than the energy supplier or end-consumer specified below.

Transaction details

Transaction type
Cancellation

Status
Completed

Transaction number
20230606000000024

Volume
50 MWh

Transaction started
06/06/2023, 11.52

Transaction completed
14/06/2023, 15.41

Public Statement
<https://demo.grexel.com/en/public/cancellationstatement/0e3626e2-5a34-4bd4-a2a5-e4fd44b63dce>

Standard
EECS_ENERGY_GAS

From account

Organization name
Testa Režims

Organization ID
55X538CD7N

Domain
Latvia Gas

Domain code
LV-GAS

Account number
643002406650000068

Street

ZIP code
LV-1021

City
Riga

Country
Latvia

Beneficiary

Name of Beneficiary
122121

Country of consumption
Latvia

Organization ID
55X538CD7N

Location of beneficiary

Consumption period
01/05/2023 - 31/05/2023

Usage type
Other

Cancellation purpose

Type of beneficiary
Energy supplier

Certificate Number (From-To)	Volume	Unit	Production period	Issuing date	Issuing country	Issuing body	Trading schemes	Earmark	Plant name and GSRN	Operational date	Energy source code and name	Technology code and name
64300240665500000000000002033 - 64300240665500000000000002082	50	MWh	01/02/2023 - 19/04/2023	19/04/2023	LV	AS Conexus Baltic Grid	GO_ENERGY_GAS	Production support	KcDevice - 643002406655000070	01/05/2005	F01010201 - Renewable/Solid/Industrial and commercial waste/Biogenic	TG30000 - Biogas/Landfill gas collection