



# **Domain Protocol for Serbia**



According to article 21 paragraph 1. Decree on Origin Guarantee („Official gazette of Republic of Serbia“ no. 82/17)) article 28. paragraph 1. Point 29) of the Articles of Association of the Joint Stock Company Elektromreža Srbije Belgrade ("Official Gazette of the Republic of Serbia", No. 88/16), the Assembly of EMS JSC Belgrade, at the XV. meeting held on December 12, 2017, brought

## **Domain Protocol**

**for**  
**Serbia**

Release [3] [2019]



## Document Control

Version	Date	Originator	Reviewers
1	12/12/2017	EMS JSC Belgrade	
2	26/09/2019	EMS JSC Belgrade	Diane Lescot, Emma Kelly

Version	Approver	Date	Responsibility
1	EMS JSC Belgrade Assembly	12/12/2017	
2			

## Change History

Version	Description
1	Initial release for National GO scheme
2	Amended according to reviewers' observations
3	Amended according to discussion during review telco

## Contents

<b>A</b>	<b>INTRODUCTION .....</b>	<b>6</b>
<b>B</b>	<b>GENERAL .....</b>	<b>7</b>
B.1	SCOPE .....	7
B.2	STATUS AND INTERPRETATION .....	8
B.3	ROLES AND RESPONSIBILITIES .....	9
<b>C</b>	<b>OVERVIEW OF NATIONAL LEGAL AND REGULATORY FRAMEWORK.....</b>	<b>11</b>
C.1	THE EECS FRAMEWORK .....	11
C.2	NATIONAL ELECTRICITY SOURCE DISCLOSURE .....	11
C.3	NATIONAL PUBLIC SUPPORT SCHEMES .....	13
C.4	PRODUCT RULES.....	13
C.5	LOCAL DEVIATIONS FROM THE EECS RULES .....	13
<b>D</b>	<b>REGISTRATION .....</b>	<b>14</b>
D.1	REGISTRATION OF AN ACCOUNT HOLDER.....	14
D.2	RESIGNATION OF AN ACCOUNT HOLDER.....	15
D.3	REGISTRATION OF A PRODUCTION DEVICE .....	15
D.4	DE-REGISTRATION OF A PRODUCTION DEVICE .....	19
D.5	MAINTENANCE OF PRODUCTION DEVICE REGISTRATION DATA .....	20
D.6	AUDIT OF REGISTERED PRODUCTION DEVICES .....	21
D.7	REGISTRATION ERROR/EXCEPTION HANDLING .....	21
<b>E</b>	<b>CERTIFICATE SYSTEMS ADMINISTRATION .....</b>	<b>22</b>
E.1	ISSUING EECS CERTIFICATES.....	22
E.2	PROCESSES .....	23
E.3	MEASUREMENT.....	24
E.4	ENERGY STORAGE (INCLUDING PUMPED STORAGE).....	24
E.5	COMBUSTION FUELS (E.G. BIOMASS) .....	25
E.6	FORMAT .....	25
E.7	TRANSFERRING EECS-GO.....	25
E.8	ADMINISTRATION OF MALFUNCTIONS, CORRECTIONS AND ERRORS .....	27
E.9	END OF LIFE OF EECS-GO – CANCELLATION.....	29
E.10	END OF LIFE OF EECS-GO – EXPIRY.....	30
E.11	END OF LIFE OF EECS-GO – WITHDRAWAL.....	30
E.12	FEES - ISSUANCE OF INVOICES.....	31
<b>F</b>	<b>ISSUER’S AGENTS .....</b>	<b>32</b>
F.1	PRODUCTION AUDITOR AND QUALIFICATION CRITERIA FOR REGISTRATION AT THE MINISTRY .....	32
<b>G</b>	<b>ACTIVITY REPORTING .....</b>	<b>33</b>
G.1	PUBLIC REPORTS .....	33
G.2	RECORD RETENTION .....	33
G.3	ORDERLY MARKET REPORTING .....	34
<b>H</b>	<b>ASSOCIATION OF ISSUING BODIES .....</b>	<b>35</b>
H.1	MEMBERSHIP .....	35
H.2	COMPLAINTS TO THE AIB .....	35



<b>I</b>	<b>CHANGE CONTROL .....</b>	<b>36</b>
I.1	DISPUTES .....	36
I.2	CHANGE REQUESTS.....	36
I.3	FINAL PROVISIONS .....	36
<b>J</b>	<b>ABBREVIATIONS .....</b>	<b>37</b>
<b>K</b>	<b>ANNEX 1: CONTACTS LIST .....</b>	<b>38</b>
<b>L</b>	<b>ANNEX 2A: ACCOUNT APPLICATION/AMENDMENT FORM.....</b>	<b>39</b>
	<b>ANNEX 2B: FORM FOR CLOSING ACCOUNT IN THE EECS-GO REGISTER.....</b>	<b>40</b>
	<b>ANNEX 2C: STANDARD TERMS AND CONDITIONS .....</b>	<b>41</b>
<b>M</b>	<b>ANNEX 3: DEVICE REGISTRATION FORM .....</b>	<b>42</b>
<b>N</b>	<b>ANNEX 4A: PRODUCTION/CONSUMPTION DECLARATION FOR HYDRO POWER PLANTS .....</b>	<b>45</b>
	<b>ANNEX 4B: PRODUCTION/CONSUMPTION DECLARATION FOR BIOMASS POWER PLANTS .....</b>	<b>46</b>
<b>O</b>	<b>ANNEX 5: EECS ELECTRICITY CANCELLATION STATEMENT .....</b>	<b>47</b>



## A Introduction

The framework specified in the EECS Rules and the detailed procedures and conditions specified in this Domain Protocol have the main objective of ensuring robustness and transparency in the facilitation of EECS Schemes for all EECS Market Participants.

A Domain Protocol promotes quality and clarity, as it:

- makes local rules transparent;
- provides clear information to all stakeholders (consumers, market parties, other members, government, the EU Commission etc.);
- facilitates assessment of compliance and permissible variance from the EECS Rules;
- facilitates audit; and
- translates local rules into a single format and language, supporting each of the above.

Important contact information is provided in Annex 1.



## B General

### B.1 Scope

- B.1.1. The Domain Protocol for Serbia covers the territory of the Republic of Serbia where EMS is the Issuing Body. The Domain of Serbia is defined as the area containing Production Devices with respect to which EMS is the Authorized Issuing Body of, for the purpose stated in B.1.5.
- B.1.2. This Domain Protocol sets out the procedures, rights and obligations, which apply to the Domain of Serbia and relate to the EECS Electricity Scheme as defined in the EECS Rules.
- B.1.3. Production Device qualification for the Domain of Serbia will be determined by connection to the electricity system of Serbia such that, in electrical terms, the Production Device is effectively located in Serbia.
- B.1.4. EMS JSC Belgrade is the Transmission System Operator for Serbia. It is also the Issuing Body for Guarantees of Origin (GO) in Serbia according to article 82 of the Energy Law (Official Gazette of Republic Serbia no.145/2014).
- B.1.5. EMS JSC Belgrade is authorized to Issue Guarantees of Origin relating to the following Product(s) (EECS Scheme):
- EECS-GOs
- in compliance with the Energy Law Article 82, which provides that Guarantees of Origin are issued only for electricity from renewable energy sources.
- Until EMS JSC Belgrade acquires full AIB membership status, it will issue national GO for electricity from renewable energy sources in the Domain of Serbia for production periods prior to AIB membership approval. Following the approval of membership, EECS-GO will be issued for electricity from renewable energy sources in the Domain of Serbia for production periods after the AIB membership approval. There may be a time when both EECS-GO and National GO are processed due to production period issuing schedules, however these production periods will not overlap and therefore duplicate GO will not be issued.
- B.1.6. Guarantees of Origin will be issued to registered Account Holders only.
- B.1.7. The definitions used in this Domain Protocol shall have the meanings ascribed to them in the EECS Rules except as stated in Article C.5 of this document.
- B.1.8. The text abbreviation GO is used for Guarantees of Origin. Except where the context indicates otherwise, words in the singular include the plural, and vice versa.



## B.2 Status and Interpretation

- B.2.1. The EECS Rules are subsidiary and supplementary to Serbian legislation.
- B.2.2. The EECS Rules and its subsidiary documents are implemented in Serbia in the manner described in this Domain Protocol. Any deviations from the provisions of the EECS Rules that may have material effect are regulated in section C5 of this document.
- B.2.3. The capitalized terms used in this Domain Protocol shall have the meanings ascribed to them in the EECS Rules except as stated in section C5 of this document.
- B.2.4. This Domain Protocol is made contractually binding between an EECS Market Participant and EMS JSC Belgrade by agreement in the form of the Standard Terms and Conditions.
- B.2.5. In the event of a dispute, the approved English version of this Domain Protocol will take precedence over a local language version.
- B.2.6. All documents stated here are valid at the time of the adoption of this Domain Protocol. This document may be replaced by an updated version, however this version shall remain valid at the time of application.



## B.3 Roles and Responsibilities

B.3.1. The Authorised Issuing Body for EECS-GO in the Domain of Serbia is EMS JSC Belgrade. Its role is to administer the EECS Registration Database (hereinafter the Registry) and its interface with the EECS Transfer System.

B.3.2. The Competent Body for EECS-GO in the Domain of Serbia is EMS JSC Belgrade. Its role is defined by legislation to be responsible for the operation of EECS-GO in the Domain of Serbia.

B.3.3. The Authorised Measurement Bodies are listed in B.3.8. and Annex 1. They are the bodies established under Energy Law to be responsible for the collection and validation of measured volumes of energy used in the national financial settlement processes.

B.3.4. Contact details for the principal roles and Issuing Body agents are provided in Annex 1.

B.3.5. The EECS Registry administered by EMS JSC Belgrade can be accessed via the website <http://cmo.grexel.com>.

B.3.6. EMS JSC Belgrade does not issue any Non-Governmental Certificate or EECS GO for Independent Criteria Schemes.

B.3.7. The following roles and responsibilities are defined for the Serbian Domain.

- AERS (Energy Agency of the Republic of Serbia)

AERS is Serbian National Regulatory Authority as defined by Energy Law and is the Competent Authority for Electricity Disclosure obligations.

- Authorised Issuing Body and Production Registrar of Production Devices in Registry

EMS JSC Belgrade was appointed by Energy Law as the Issuing Body for Guarantees of Origin for Serbia.

EMS JSC Belgrade business processes will cover Registration, Issuing, Transferring, Importing, Exporting, Cancellation, Expiry and Withdrawal of EECS-GO related to the Serbian Domain. EMS JSC Belgrade is the Operator of the Registry.

- Registry provider

Grexel Systems provide the software for the Registry, named CMO.grexel.

- Measurement Body

Measurement Bodies in Serbia are:

- 1) EMS JSC Belgrade in its role as Measurement Body (Production Devices connected to the transmission grid)
- 2) EPS Distribucija Ltd. Belgrade, the Distribution System Operator (Production Devices connected to distribution grid) in its role as Measurement Body
- 3) Operators of closed distribution systems (where applicable)

- Account Holders

Only electricity producers of energy from renewable sources, suppliers and wholesale suppliers with active licenses issued by AERS can be Account Holders in Serbia.

- Ministry of Mining and Energy (hereinafter Ministry) as Production Auditor

The Ministry has established a register for all renewable producers. The Ministry is responsible for registering all electricity producers from renewable sources in Serbia to



the register. Relevant qualification criteria must be met for the Ministry to add Production Devices to this register (<http://www.mre.gov.rs/doc/registar-230419.html>).

B.3.8. Tariffs for services document is a decision of EMS JSC Belgrade Assembly and it is approved by National Regulatory Authority (hereinafter: NRA). It can be found on the EMS web-site.

## C Overview of National Legal and Regulatory Framework

### C.1 The EECS Framework

C.1.1. For the Domain of Serbia, the following legislation is relevant:

- The Treaty establishing the Energy Community (the Treaty) is an international agreement concluded between the European Community on the one hand and Albania, Bosnia and Herzegovina, Macedonia, Moldova, Serbia, Ukraine, Montenegro and UNMIK, as the Contracting Parties, on the other. It established the Energy Community as an international organization with the aim of extending the internal energy market of the EU to the region of Southeast Europe and the Black Sea region.
- By adopting the Treaty, the Contracting Parties made legally binding commitments to adopt core EU energy legislation (adapted by Energy Community), the so-called "acquis communautaire". The Treaty and its acquis evolve constantly to incorporate new sectors as well as update or replace older acts. To stay on track with the evolution of European Union law, Articles 24 and 25 of the Treaty allow the adaptation of the acquis and implementing of possible amendments. This ensures that the Energy Community Contracting Parties keep pace with EU developments and continuously align their regulatory frameworks in the energy and related sectors to those of the EU.
- Energy Law (Official Gazette of Republic of Serbia no.145/2014), (<http://www.mre.gov.rs/doc/efikasnost-izvori/EnergyLaw.doc>)
- Regulation on Guarantee of Origin (Official Gazette of Republic of Serbia no. 82/2017), which describes, in more detail, the content of the Guarantee of Origin, the procedure for issuing, transferring and end of life cycle of a Guarantee of Origin, the process of registry administration and maintenance, the process of submitting data of the produced electricity measured at the delivery point from the transmission, distribution and closed distribution system, supervision, as well as other processes in accordance with the law, ([http://www.ems.rs/page.php?kat\\_id=670](http://www.ems.rs/page.php?kat_id=670))
- Disclosure regulation (Official Gazette of Republic of Serbia no. 96/2017), which prescribes the way in which the end consumer information is calculated and shown, the share of all types of energy sources of the sold electricity, as well as the calculation control and verification, ([http://www.ems.rs/page.php?kat\\_id=670](http://www.ems.rs/page.php?kat_id=670))
- Information on fees for issuance, transfer and end of life cycle of Guarantees of Origin, ([http://www.ems.rs/page.php?kat\\_id=670](http://www.ems.rs/page.php?kat_id=670))
- This Domain Protocol

C.1.2. EMS JSC Belgrade has been appointed as an Authorised Issuing Body for Guarantees of Origin in accordance with Article 82, paragraph 1, of the Energy Law.

### C.2 National Electricity Source Disclosure

Pursuant to Article 87, paragraph 5 of the Energy Law ("Official Gazette of the Republic of Serbia", No. 145/14) Fuel mix Disclosure is required by law, detailed in the Disclosure regulations adopted by the Ministry. Supplier Fuel Mix Disclosure in Serbia is based on cancelled GOs and the National Residual Mix. In accordance with Article 196 of the Energy Law the supplier shall determine, calculate and disclose the share of all types of energy sources of the electricity sold to its end consumers. This is achieved by applying the mathematical formulas of the Methodology for the calculation and the result is, disclosure of the proportion of energy sources of electricity sold to end



consumers (hereinafter: Methodology), which is attached as an Annex to the Disclosure regulation and constitutes its integral part.

#### C.2.1. Disclosure methodology and process

The proportion of electricity produced in the support system (Feed-in tariff) is determined by the total electricity produced by the privileged electricity producers in the previous calendar year. The Guaranteed Supplier determines and publishes a report on the quantities and structure of the electricity produced in the support system on its official website by the end of February of the current year, for the previous calendar year. When calculating the structure of produced electricity in the support system, the Guaranteed Supplier divides the energy into 12 attributes and displays the structure of the electricity produced in the support system.

In accordance with the Energy Law and Disclosure regulation, the Transmission System Operator calculates the National Residual Mix using the issuance based methodology, based on:

- 1) the produced electricity data for each production unit that is connected to a transmission, distribution or closed distribution network,
- 2) data on total electricity sold to all end consumers in the transmission, distribution or closed distribution network,
- 3) data on electricity losses in a transmission, distribution or closed distribution network,
- 4) data on the actual electricity exchange on certain borders,
- 5) data on the exchange of attributes with a European mix of attributes in accordance with the Methodology,
- 6) data on cancelled and expired Guarantees of Origin.

Up to the 1<sup>st</sup> of March of the current year, for the previous calendar year, for the purposes of the calculation referred to in point 1 above, the Distribution System Operator and the Operator of closed distribution system provide the metering data to the Transmission System Operator for the relevant production units, stating the energy source or technology for each production unit, connected to the distribution or closed distribution network.

By the 31<sup>st</sup> of May of the current year, the Transmission System Operator calculates and publishes, on its official website, an annual report of the National Residual Mix for the previous calendar year. The annual National Residual Mix report contains:

- 1) data on production and consumption of electricity in Domain of Serbia, import and export of electricity, taking into account the structure of electricity,
- 2) data on issued, expired and cancelled Guarantees of Origin for electricity in the Domain of Serbia,
- 3) data on the structure of the National Residual Mix and the data used in determining the structure of the National Residual Mix,
- 4) the share of each type of energy source in the National Residual Mix.

By using the data from the National Residual Mix report and cancelled GOs, the suppliers calculate and present the share of all types of energy sources of electricity that they have sold to their end consumers in the form of a report, from 1<sup>st</sup> of July till 31<sup>st</sup> of July of the current year, for the previous calendar year. This information is delivered in the form of report, in or enclosed with the invoice for the electricity sold by the supplier or in another appropriate manner.

The Energy Agency of the Republic of Serbia (AERS) is tasked with carrying out the checking process. By 31<sup>st</sup> of July of the current year, for the previous calendar year, the supplier delivers to the Energy Agency of the Republic of Serbia the following data:

- 1) total electricity sold to its end consumers,

- 2) information on the total cancelled Guarantees of Origin for each tariff package of services,
- 3) data on the structure of electricity sold for each tariff package of services separately, in accordance with the Methodology and
- 4) the sample report to the end consumer and at least one report which was sent to a specific end consumer.

for the purpose of calculation control and verification.

As the Transmission System Operator, EMS JSC Belgrade is tasked with carrying out the Residual Mix calculation and publishing.

### **C.3 National Public Support Schemes**

The main support scheme in Serbia is FIT (Feed-in tariff). This scheme is funded by a Public Service Obligation levy charged to all end customers and is administered by the Ministry and Guaranteed supplier. Production Devices in receipt of support for ongoing production of electricity (Feed-in-tariff) do not receive EECS-GO in Serbia. In terms of the annual Fuel Mix Disclosure calculation, the attributes of these renewable Production Devices are assigned to each end consumer in Serbia through its supplier.

### **C.4 Product Rules**

- C.4.1. EMS JSC Belgrade issues EECS-GO for electricity produced from renewable energy sources, on a monthly basis, with a 12 month expiry period for the purpose of Fuel Mix Disclosure.
- C.4.2. The EECS Product Rules as applied in Serbia are set out within sections D and E of this document.

### **C.5 Local Deviations from the EECS Rules**

- C.5.1. All Guarantees of Origin with production period before EMS JSC Belgrade becomes member of Association of Issuing Bodies (AIB) will be issued under the name of National GO. These Guarantees of Origin are only valid in the Domain of Serbia.
- C.5.2. EMS JSC Belgrade is not an authority, but organised as a Joint Stock Company. The term "Competent Body" is therefore used in this Domain Protocol, instead of the term "Competent Authority", which is defined in the EECS Rules.
- C.5.3. GO (National GO) issued prior to the acceptance of EMS JSC Belgrade in AIB will remain in the account of the Account Holder until is used or until it expires. Exporting of National GOs to EECS Accounts will not be possible either within the CMO.grexel Registry or through the AIB Hub.
- C.5.4. EMS JSC Belgrade does not conduct Audit. Audit is performed according to the Ministry's procedures.
- C.5.5. Request for EECS-GO issuance can be sent to EMS JSC Belgrade within 6 months of the last day of the Production Period but no later than March 15<sup>th</sup> for output generated in the previous calendar Year.

## D Registration

### D.1 Registration of an Account Holder

D.1.1. Only electricity producers from renewable sources registered at the Ministry, suppliers and wholesale suppliers with an active license issued by NRA can be registered as Account Holders in Serbia. The registration process begins when the applicant completes and sends the Account application form (Annex 2a) to EMS JSC Belgrade, duly signed by an authorised representative. The Account application form shall be published on EMS JSC Belgrade website. The required attachments of the Account application form are following:

- i. Original or certified copy of excerpt from the court or company register (only for international participants)
- ii. A copy of; the first page of a passport or identification card or another form of legitimate identification, for each authorised representative who signs the Standard Terms and Conditions.

Account application form and required attachments should be sent via e-mail ([grexel-info@ems.rs](mailto:grexel-info@ems.rs)). The Applicant should include the Energy Identification Code (EIC) issued by the local issuing office, authorised by ENTSO-E, in its Account application form.

D.1.2. EMS JSC Belgrade will compare data from the Account application form against the Ministry's data regarding the status of producers from renewable sources and against the NRA's data regarding the issued licenses for wholesale electricity supply or for electricity supply for suppliers.

D.1.3. EMS JSC Belgrade will check data detailed in the Account application form and attachments and may ask the applicant for amendments or clarification of the data if necessary. EMS JSC Belgrade will deny registration if it contains any erroneous data.

D.1.4. Reasons for rejection may be:

- a) required documents are missing or are not properly completed
- b) EMS JSC Belgrade has doubts about the competence and/or aims of the applicant

D.1.5. After the verification of the Account application form EMS JSC Belgrade will prepare and send the applicant the Standard Terms and Conditions form (Annex 2c) via e-mail within 3 working days. The Standard Terms and Conditions form shall be published on EMS JSC Belgrade website. If the applicant accepts the terms and conditions, two copies of the Standard Terms and Conditions form should be duly signed by an authorised representative and returned to EMS JSC Belgrade.

D.1.6. The AIB "know-your-customer" (KYC) form for international and domestic participants may be requested by EMS JSC Belgrade if it is deemed necessary (e.g. a new participant onto the Serbian electricity market).

D.1.7. The Account Holder nominates an Authorised Root user to operate on their behalf and the Account application form (Annex 2a) needs to be completed, signed and submitted, meaning that Root user details must be completed.

D.1.8. If the Standard Terms and Conditions is duly signed by applicant and originals received, then EMS JSC Belgrade:

- a) Opens an Account within the Registry for the applicant organization. A log-in authorization Certificate will be sent automatically via e-mail to the named

root user of the applicant, awarding full rights to the created Account (root user). The password to install the Certificate will be sent via SMS.

- b) signs both copies of the Standard Terms and Conditions, archives one and sends the other to the Account Holder.

D.1.9. The Applicant officially becomes an Account Holder when both sides sign the Standard Terms and Conditions agreement.

D.1.10. Tariffs for participating in EECS-GO Scheme in Serbia can be found on the EMS JSC Belgrade website.

## D.2 Resignation of an Account Holder

### D.2.1. Resignation

The Account Holder must notify EMS JSC Belgrade of their intent to close their Account in the Registry by completing, duly signing and sending the form for Account closure from the EECS-GO Register (Annex 2b). Form for Closing Account in the EECS-GO Register will be published on EMS JSC Belgrade website. The effective date of closure must not be less than 10 working days from the date of receipt by EMS JSC Belgrade.

EMS JSC Belgrade will close the account in the Registry as of the effective date listed in the request or 10 working days from the date of receipt by EMS JSC Belgrade, whichever is later.

Any EECS-GO in the account must be transferred before the notice to close is sent or this EECS-GO will be counted in Residual Mix calculation for Serbia when they expire.

Before closing the account all due fees to EMS JSC Belgrade shall be paid by Account Holder requesting Resignation. If all due fees are not paid to EMS JSC Belgrade, the account shall not be closed.

Any annual fees, if applicable, paid by the Account Holder will not be refunded.

D.2.2. Additionally EMS JSC Belgrade may close an account in the following cases:

- In case of violation of the provisions of the Regulation stipulated in C.1.1. or the provisions of the EECS Rules if applicable;
- In case of breach of the STCs.

In case of violation of the above mentioned rules and regulations or the STCs, the closure shall take effect immediately.

## D.3 Registration of a Production Device

### D.3.1. Application

EMS JSC Belgrade is responsible for Production Device registration.

Account Holders, which aim to register a Production Device for EECS-GO, are referred to as Registrants. Only the Account Holder who is the owner of a Production Device may register a Production Device, which is located in Serbia, into the Registry.

Production Devices can only be registered by Registrants if they meet the qualification criteria for EECS-GO. To be qualified, Production Devices must:

- be situated in Serbia;
- be registered in the registry of producers from renewable energy sources at the Ministry and
- must not be in receipt of support for ongoing production of electricity.

The Registrant shall state the Energy Identification Code (EIC) issued by EMS in its Device Registration Form.

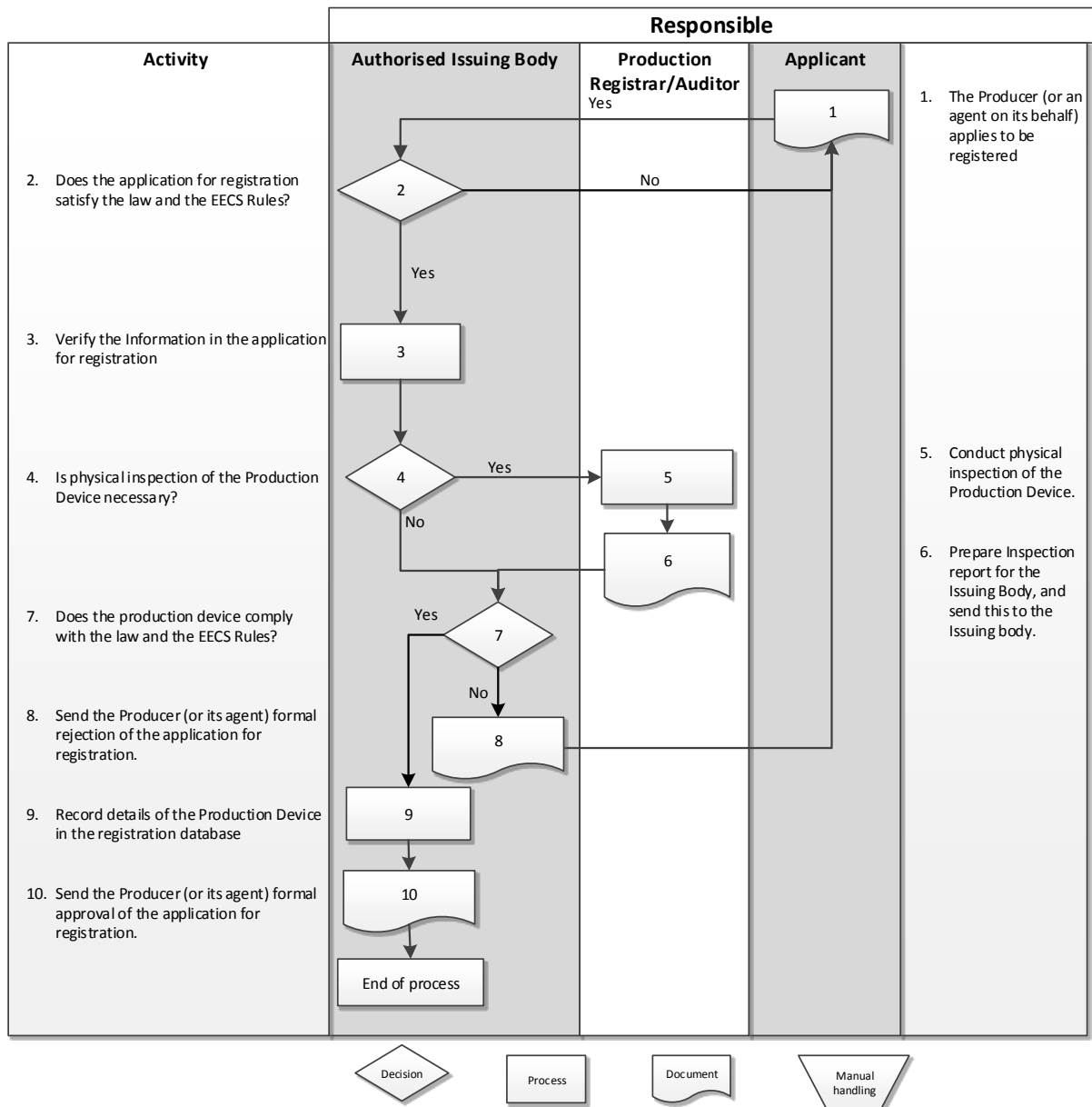


#### D.3.2. Maintenance of standing data

An Account Holder must immediately notify EMS JSC Belgrade in writing of any changes of their standing registration data. EMS JSC Belgrade will amend the Registry accordingly within 3 working days, if approved.



D.3.3. Flow chart and steps in registration process



1. The Registrant must submit a registration form containing the following data:

- Production Device: Name, address, registrant, start date, commissioning date, installed capacity, earmark name and type, Operator, applied EECS schemes and all owners and accounts where the EECS-GO shall be issued.
- Codes of all possible Fuels, which can be converted into energy by that Production Device according to fuel codes in AIB EECS Fact Sheet 5.
- Technology code of the Production Device according to technology codes in AIB EECS Fact Sheet 5.

By registering a Production Device for the purpose of EECS-GO, the Registrant consents to the publication of limited data of the Production Device:

- Name
- Domain
- Fuel(s) type

- Technology type
- Installed capacity
- Date of commissioning
- Location
- Name and address of Operator
- Support schemes

As the Production Device is registered into Registry, it is assigned a unique identifier, if one has not already been assigned. The identifier consists of a number with 18 numeric characters that also identifies the Domain. GS1/GSRN (Global Service Relational Number) coding is used.

2. EMS JSC Belgrade validates the application. EMS JSC Belgrade can verify the data related to the Production Device application including, but not limited to:
  - Ownership
  - Metering
  - Date of Commissioning
  - Installed Capacity
  - Location
  - Fuel(s) type
  - Technology type
  - Support received

by comparing it with the data in Ministry's register. EMS JSC Belgrade has the right to demand an audit to verify received data.

#### D.3.4. Support scheme check

All checks relating to whether a unit is (or has previously been) in receipt of Support are verified with the Ministry, the administrator of the Support Scheme mechanism in Serbia.

The agreement that producers sign with the Ministry states that they agree not to claim EECS-GO and that they must exit the Support Scheme should they wish to receive EECS-GO (and cannot re-enter).

EMS JSC Belgrade completes a check to ensure that units in receipt of support do not register for to receive EECS-GOs.

Therefore, fraudulent activity would be captured and the Ministry would be informed and pursue legal recourse against the participant in question. If fraudulent activity is discovered and the EECS-GOs have been exported, EMS JSC Belgrade will advise the Member State as per Section E.12.

#### D.3.5. Metering diagram

A metering diagram of the Production Device must be supplied by the Registrant and Measurement Bodies where necessary. This diagram should include at least the following information:

- Connection to grid(s)
- Location and codes of all Exit Measurement Points and Entry Measurement Points
- Location of transformers
- Location of Production Auxiliaries



- where there are P. When the Production Device is activated, EMS JSC Belgrade will inform the Registrant.
1. If the application is rejected, this is formally communicated to the Registrant and the Registry is amended to reflect this rejection.
  2. If the application is accepted, the Registry is amended to reflect this approval. The five year review date is also updated at this point.
- D.3.6. Following the registration, EMS JSC Belgrade will publish an updated list of Registered Production Devices per Account Holder on the EMS JSC Belgrade website.
- D.3.7. EMS JSC Belgrade will register the Production Device in Registry no later than 20 working days from the date of receipt of the registration form by EMS JSC Belgrade.
- D.3.8. Metering data shall be provided depending on which grid the Production Device is connected to.
- D.3.9. All the Metering Data of Production Devices shall be aggregated to the account of the Account Holder who registered the Production Devices and shall be at the disposal of that Account Holder for issuance (per each Production Device separately). After the issuance, all GOs shall be deposited to the account of the Account Holder.
- D.3.10. The tariffs for participating in the EECS-GO Scheme in Serbia can be found on the EMS JSC Belgrade website.

#### **D.4 De-Registration of a Production Device**

- D.4.1. The Account Holder must notify EMS JSC Belgrade of their intent to deregister the Production Device in written form. The effective date of deregistration must not be less than 10 working days from the date of receipt by EMS JSC Belgrade.
- EMS JSC Belgrade will deregister the Production Device in the Registry as of the effective date listed in the request or 10 working days from the date of receipt by EMS JSC Belgrade, whichever is later.
- D.4.2. Re-registration is described in Section D.5.1

## D.5 Maintenance of Production Device Registration Data

### D.5.1. Re-registration of Production Devices

The registration of a Production Device expires after five years. The Registrant must re-apply for registration for the Production Device before expiry. EMS JSC Belgrade will advise participants when the five year deadline is approaching and request that the participant review the data and either confirm that the data is unchanged or advise of changes. EMS JSC BELGRADE will verify the data in the Ministry's Registrar following the process detailed in D.3.3.

### D.5.2. Changes to Registration Data

The Registrant of a Production Device must notify EMS JSC Belgrade immediately of any planned or unplanned changes to their standing Production Device data.

The registrant must notify EMS JSC Belgrade of such changes by making the necessary amendments to Production Device information in the Registry.

On receipt of a change of details notification EMS JSC Belgrade will verify the change and respond to the Registrant within 10 working days specifying the decision taken. EMS JSC Belgrade may respond to the changes by approving or rejecting them in the Registry.

If EMS JSC Belgrade becomes aware that a Production Device no longer fulfils, or will no longer fulfil, the qualification criteria, the Registry record for that Production Device will be updated to show that the Production Device no longer qualifies for EECS Scheme with effect from:

- (in relation to planned changes notified in advance) the date on which such planned changes are due to come into effect; or
- (in relation to other changes) as soon as is reasonably practicable after becoming aware of the change.

### D.5.3. Changes to Capacity

If there is a change to the Production Device's registered Installed Capacity, this must be approved by the Ministry. The Account Holder must notify EMS JSC Belgrade of such changes by making the necessary amendments to Production Device information in the Registry and EMS JSC Belgrade will approve or reject based on information from the Ministry. EECS-GO cannot be issued while changes in the database are under review, issuing will commence when changes are approved.

### D.5.4. Changes in relation to qualification

If EMS JSC Belgrade becomes aware that a Production Device no longer qualifies for EECS-GOs under the EECS rules, then any EECS-GO issued in error will be dealt in accordance with Section E.8 of the Domain Protocol.

### D.5.5. Reassessment of Production Device

If EMS JSC Belgrade or the Ministry need to review the registration data of a Production Device, following changes made in the Registry by the Account Holder, EECS-GO cannot be issued while these changes are under review, issuing will commence when changes are approved.

## D.6 Audit of Registered Production Devices

D.6.1. Inspections of Production Devices registered in the Registry are conducted under the rules of audit according to the law and the procedures of the Energy Inspectors delegated by the Ministry.

D.6.2. The Registrant must permit Energy Inspectors to access the Production Device or the records associated with it, its energy output and sources of energy.

D.6.3. EMS JSC Belgrade shall verify various points of information at least:

- National Regulatory Authority – Licenses
- Ministry – Statuses of Producers of renewable energy and relevant data on their Production Device

An additional check may be completed with the Distribution System Operator and Operators of closed distribution systems, Guaranteed supplier and EMS JSC Belgrade internal data.

D.6.4. The period between inspections of a Production Device will not exceed 5 years.

D.6.5. Refusal to permit access may be considered a breach of the Standard Terms and Conditions.

D.6.6. Registrants must report any changes to standing data of a Production Device under D.5.2.2.

D.6.7. If an inspection identifies material differences from the details recorded on the EECS Registration Database, the Registrant must re-apply for registration of the Production Device. EECS-GO will not be issued before corrective actions have been performed.

## D.7 Registration Error/Exception Handling

D.7.1. Any errors in EECS-GO resulting from an error in the registered data of a Production Device will be handled in accordance with section E.8.

D.7.2. If EMS JSC Belgrade detects an error in the information of a Production Device in the Registry, it will apply the procedures outlined in Section E.8.

D.7.3. In case of breach of Product Rules or Standard Terms and Conditions the Registrant shall be suspended from Registry until, if it is applicable, all breaches are corrected. Until all the necessary corrections are done, participation in EECS-GO Scheme in the Domain of Serbia will not be possible.



## E Certificate Systems Administration

### E.1 Issuing EECS Certificates

E.1.1. Only EECS Certificates are issued under this Domain Protocol:

- For a Production Device which, at the time of Issuing is:
  - situated in the Domain of Serbia
  - duly registered in the EECS Registry administered by EMS JSC Belgrade
- for the Qualifying Output of such a Production Device during each calendar month in which it is registered for the purpose of the EECS-GO Scheme
- for a Production Device not registered for any other certificate scheme ,
- for metering data provided by the relevant Measurement Bodies according to section E.3
- within the time limits stipulated by the relevant legislation
- after the request has been made by the Registrant

E.1.2. One EECS-GO represents 1 MWh of produced electric renewable energy.

E.1.3. GO is issued within 3 working days of the request.

E.1.4. For Production Devices using several types of energy sources EECS-GO can be issued only for the proportion of energy which has been produced from renewable energy sources.

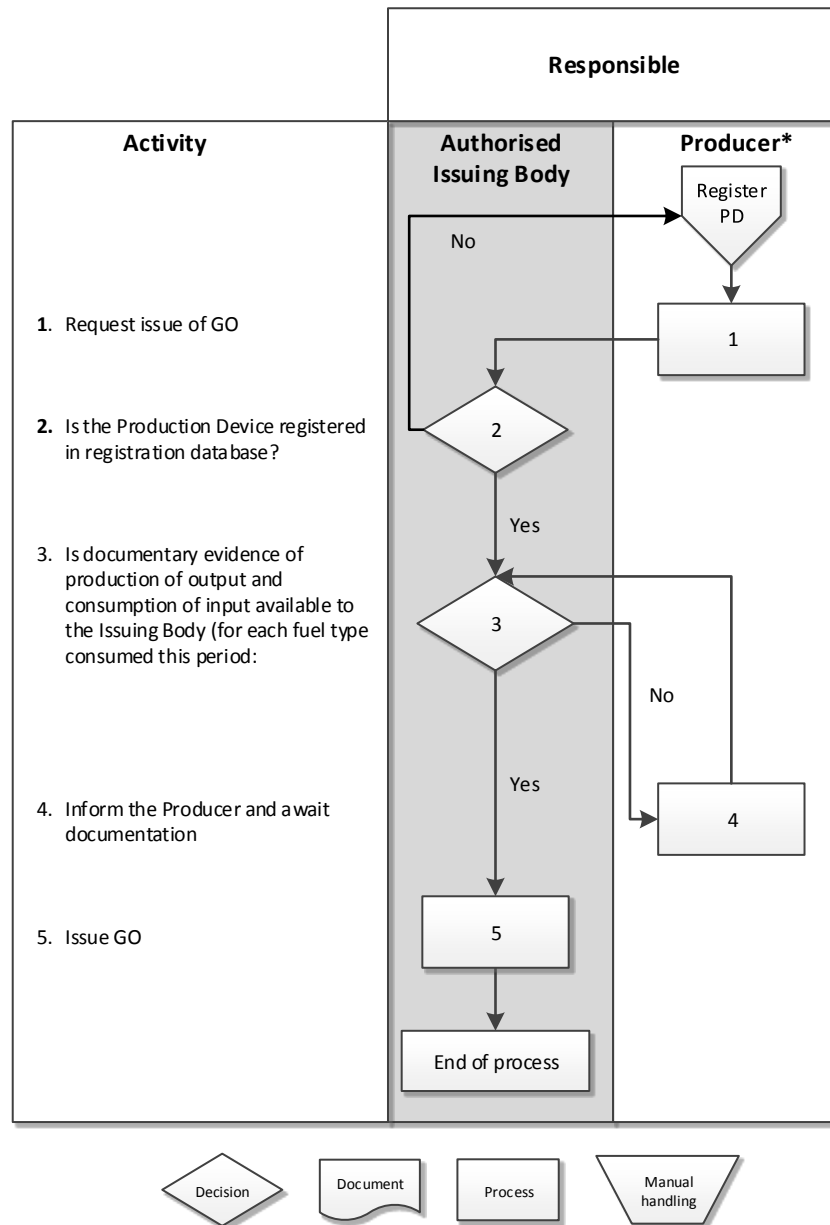
E.1.5. Request for issuance shall be sent to EMS JSC Belgrade within 6 months of the last day of the Production Period and no later than March 15<sup>th</sup> for output generated in the previous Year, as stipulated by relevant legislation.

E.1.6. The Account Holder shall submit a production declaration for every Production Device that uses multiple energy sources.

E.1.7. No National GO can be converted into EECS-GO.

## E.2 Processes

### E.2.1. Flow chart and issuing steps



1. Measurement Bodies send data of Net Electrical Energy Generation of Production Devices to EMS JSC Belgrade for the purpose of issuing Guarantees of Origin. The data is uploaded into the system by EMS JSC Belgrade. Net Electrical Energy Generation means the gross electricity production of a Production Device as evidenced by measured values collected and determined by an Authorised Measurement Body with reference to its Exit Measurement Points and Entry Measurement Points (adjusted by meter amendments and the outcome of any disputes) minus the demand of any Production Auxiliaries and minus losses in the main generator transformers on the site of the Production Device.
2. EMS JSC Belgrade issues EECS-GO for whole or part of production of Production Devices in the specified month according to the request for issuing by the Account Holder. Request for issuing can be sent to EMS JSC Belgrade at any time respecting the deadlines in E.1.6.



3. EMS JSC Belgrade issues EECS-GO and deposits them to the Account nominated by the Registrant in the Registry. One EECS-GO is issued for each whole MWh of qualifying energy output of a registered Production Device. Any identifiable residual kWh will be carried forward to the next issuing period.

E.2.2. The Account Holder is informed of the total issued and available EECS-GOs by accessing its account details or checking the Reports section in the Registry.

### E.3 Measurement

E.3.1. Only Production Devices that are equipped with metering equipment that complies with the relevant rules that regulate the access to transmission and distribution system shall be registered. At the time of adopting the Domain Protocol the existing legislation and rules are:

- Energy Law, Official Gazette of Republic Serbia no. 145/2014
- Metrology law, Official Gazette of Republic Serbia no.15/2016
- Regulation on conditions of delivery and supply of electricity, Official Gazette of Republic Serbia no 63/2013,
- Grid code published on the official website of EMS JSC Belgrade
- Distribution grid code published on the official website of EPS Distribucija Ltd Belgrade.

E.3.2. In its role as TSO, EMS JSC Belgrade has access to the metering data, therefore metering data is readily available and verified. The Distribution System Operator (DSO) is obliged by law to send verified metering data to EMS JSC Belgrade 14 days from the end of the month at latest.

E.3.3. The Production Device owner is responsible for delivering the information regarding fuel used for production of energy output.

Information shall be provided to EMS JSC Belgrade in the Registry and via a Production Declaration Form enclosed in Annex 4a and Annex 4b.

EMS JSC has right to request additional production data.

E.3.4. Metering data shall be delivered to EMS JSC Belgrade on monthly level and shall enable the calculation of the Net Electricity Production from renewable sources of the Production Device for the corresponding Production Period.

E.3.5. Data format for delivering metering data is determined independently by EMS JSC Belgrade.

E.3.6. The Account Holder is responsible for making Production data available to the Measurement Bodies for every Production Device on their account.

### E.4 Energy Storage (Including Pumped Storage)

E.4.1. Pumped storage can request EECS-GO for the portion of the production which is not derived of pumping. EMS JSC Belgrade in its role as Measurement Body shall collect metering data and use only netted values of production and energy used for pumping. For electricity produced in pumped storage hydropower plants EECS-GO are issued for the total produced electric energy minus the energy consumed for pumping and auxiliary.

E.4.2. The form for production/consumption declaration for pumped hydro power plants is enclosed in Annex 5 of this Domain Protocol and can be downloaded from the website ([www.ems.rs](http://www.ems.rs)).



## E.5 Combustion Fuels (e.g. Biomass)

E.5.1. In plants where electricity is produced also from fossil fuels beside the renewable energy sources, EECS-GO shall only be issued for the electricity that is produced from renewable energy sources, in regards to the percentage of specific renewable energy source. This is possible only for biomass energy inputs.

E.5.2. The Registrant of the Production Device with more than one Input is obliged to submit a Production/Consumption Declaration (for the same period) for each combustible Input and to specify therein:

- a. the values of  $M^1, C^1 \dots M^n$  and  $C^n$ ; and
- b. as the Energy Input Factor for that Input and that period, a factor no greater than L, where L is the proportion of the total Output produced during this period by the relevant Input and is calculated as follows:

$$L = \frac{M^1 \times C^1}{(M^1 \times C^1) \dots + (M^n \times C^n)}$$

Where

$M^1$  is the mass of the relevant Energy Input for that Production Device during the relevant period

$C^1$  is the average calorific value of the relevant Energy Input for that Production Device during the relevant period

$M^n$  is the mass of each relevant Input other than the relevant Input for that Production Device during the relevant period

$C^n$  is the average calorific value of each relevant Input other than the relevant Input for that Production Device during the relevant period.

E.5.3. The form for production/consumption declaration for biomass is enclosed in Annex 4b of this Domain Protocol and can be downloaded from the website ([www.ems.rs](http://www.ems.rs)).

## E.6 Format

E.6.1. EECS Certificates shall be issued in such format as may be determined by AIB from time to time.

## E.7 Transferring EECS-GO

E.7.1. The Account Holder may access their Account also to transfer EECS-GO in the Registry, between their and other Accounts within the Serbian Domain or between their and an Account in another Domain, via the Registry.

E.7.2. Only persons duly authorised by the Account Holder may request the transfer of EECS-GO from that Account Holder's Account. Authorised persons must be identified on the Account application form.

Authorised persons can be added later by an existing user with adequate rights.

E.7.3. GO can only be transferred through the Registry.

E.7.4. The initiation of transfers is completed in the Registry by the Account Holder who is selling, by selecting the EECS-GO to be transferred.

E.7.5. The transfer of EECS-GO through the Registry and the confirmation of that transfer are automated.

When the Account Holder has initiated the transfer, the system instantly displays a message of whether or not the transfer has been successful.

If the transfer is successful the EECS-GO are automatically transferred to the receiving account. If the transfer is not successful, the EECS-GO do not leave the account of the Account Holder who is selling.

EMS JSC Belgrade cannot return EECS-GO to an Account Holder's account because of an error in selection of the Account within the registry.

When transferring between Accounts in two different Domains, the success of the transfer is subject to the verification process of the AIB HUB and the receiving registry. If the transfer is not successful, the EECS-GO are returned to the Account of the initiating Account Holder.

During the transfer of EECS-GO between Accounts in two different registries the EECS-GO are not available for another transfer while transitioning from register to register.

The EECS-GO in transfer are firstly deducted from transferor account and then they are added to transferee account.

The Participant is informed of a successful transfer in Transactions section in its account

In transfers between Accounts in two different Domains, EMS JSC Belgrade will cooperate with other Members of the EECS scheme to amend its own, or the other Member's Account Holder information when the issue is related to transferring.

On the home screen of the Registry, the Account Holder can see an alert list related to following activities that take place in the system:

- PD Alerts: When a Production Device of the organization is approved by the Issuing Body.
- Incoming Transfers: When the Account Holder receives certificates from another Account Holder that comes from the same Domain (Transfer) or to another Domain (Import).
- Cancellation Alerts: When Cancellations made by Account Holder are approved or rejected by the Issuing Body.

E.7.6. Import of EECS-GO

Import of EECS-GOs are handled in the way that the transferor from a different registry (Domain) selects Account Holder from the Domain of Serbia (Serbian Registry) to whom he wishes to transfer the EECS-GOs. The Serbian Registry only accepts GOs from renewable sources.

The Account Holder in the Serbian Registry has the option in the Registry to block the import of EECS-GO from other registries. If the Account Holder enables the import of EECS-GO to its account, it is obliged to pay any fee as a result of that import. GOs from domains that are not recognized by EMS JSC Belgrade can be imported to Registry but cannot be used for Disclosure. Nevertheless, fees for the import of such GO shall be borne by that Account Holder.

Import restriction:

Registry cannot accept GO which are not from renewable sources.

#### E.7.7. Export of EECS-GO

Export of EECS-GO are handled in the way that the transferor from the Serbian Registry selects the Domain where they wish to transfer the EECS-GO. After selecting the Domain, the list of possible transferees shall become available. The transfer shall be completed by selecting the desired transferee.

Ex-domain cancellation:

If the Republic of Serbia has an international agreement for mutual recognition of guaranties of origin with a domain that is not a member of the AIB in terms of Article 83, paragraph 1 of the Energy Law, and there is no technical possibility to carry out the export of Guarantees of Origin in that domain, EECS-GO can be used in the Registry for the needs of the end customer in that domain.

#### E.7.8. Administration of malfunctions, corrections and errors in transfers

EMS JSC Belgrade has the right to perform corrective actions such as withdrawal or transfer of EECS-GO in its own registry where EECS-GO have been erroneously issued or transferred. In case that EECS-GO have been erroneously transferred, EMS JSC Belgrade has the right to return the corresponding EECS-GO to the original Account Holder. EMS JSC Belgrade will get in touch with other issuing bodies if the EECS-GO has left the Serbian Registry.

E.7.9. Where it is impossible to transfer for technical reasons, this can be overcome by cancelling EECS-GO for use in another domain, with the agreement of the importing issuing body. Any such cancellations are notified to the "importing" issuing body and the AIB Secretariat.

### E.8 Administration of Malfunctions, Corrections and Errors

E.8.1. If EMS JSC Belgrade detect errors in Account Holder information, it will correct it immediately. The relevant Account Holder will be informed of such actions.

E.8.2. In the event that EMS JSC Belgrade has issued too many EECS-GO in error, EMS JSC Belgrade will remove EECS-GO of the same type and same quantity from the relevant Account Holder to compensate for the discrepancy. In the event that EMS JSC Belgrade has issued too few EECS-GOs in error, it will issue additional EECS-GO for the relevant Fuel Type, Production Device and production period.

In the event that the data within an EECS-GO(s) is inaccurate (whether or not through an act or omission of the Account Holder of the originating Production Device):

- a) EMS JSC Belgrade will (provided that such EECS-GO are, at the time of such Withdrawal, in the Account of that Account Holder) withdraw those EECS-GOs; and
- b) In the case when EECS-GO are no longer in the Domain of Serbia, EMS JSC Belgrade will cooperate with other Issuing Bodies to withdraw the erroneous EECS-GO.

E.8.3. EMS JSC Belgrade may also alter an EECS-GO held in its EECS Registry so as to rectify an error which occurred prior to its transfer into the Account in which it is held at such time, provided:

- a) the Account Holder has agreed to such alteration;
- b) it is reasonably satisfied that any unjust enrichment of an EECS Scheme Participant as a consequence of such error has, to the extent reasonably practicable, been nullified;
- c) it is reasonably satisfied that the alteration itself does not give rise to undue enrichment of the Account Holder.



E.8.4. Once issued, the details of an EECS-GO cannot be altered or deleted except to correct an error.

## E.9 End of Life of EECS-GO – Cancellation

E.9.1. The initiation of cancellations is done by the relevant Account Holder by performing cancellations and executing the action in the Registry. The Account Holder must specify the EECS-GO and amount to be cancelled as well as the country of consumption, name of beneficiary (meaning tariff package), location of beneficiary (Serbia, except in the case where the tariff model covers only one specific geographical branch), usage category (only Disclosure), Consumption Period Start and End, Type of beneficiary (depending of tariff model: Energy supplier or End-consumer) and cancellation purpose (description of tariff package).

Certificate Cancellation	
Selected certificate amount	23481
Amount of certificates to Cancel	<input type="text"/> *
Country of Consumption	- Select - * <small>Note: Certificates may only be cancelled for domestic consumption in countries where the EECS is not implemented.</small>
Name of Beneficiary	<input type="text"/> *
Location of beneficiary	<input type="text"/> * <small>Department, unit, division, or geographical branch</small>
Usage Category	- Select - * <small>Support: Cancelled to receive financial support, Disclosure: Cancelled under a green labeling scheme or as proof of supply to consumers or for own use. Has not been used to receive financial support, Other</small>
Consumption Period Start	YYYY-MM-DD *
Consumption Period End	YYYY-MM-DD *
Type of beneficiary	- Select - *
Cancellation Purpose	<input type="text"/>
Publishing	<input type="checkbox"/> Make this cancellation statement publicly available and create a link

**Note:** Fields marked with an asterisk are mandatory

Cancel Certificates

Back

### Cancellation Request form

Type of beneficiary is based on tariff packages offered to consumers. Cancellation can be performed for:

- specific group of consumers in tariff package
- Default mix of supplier

EECS domains to which a secure electronic transfer of EECS-GO is possible are not included in the list of “country of consumption”, which prevents ex-domain cancellations from Serbia to these domains.

E.9.2. The cancellation of EECS-GO is automated and needs approval by EMS JSC Belgrade. Cancellation is done in Registry. EECS-GO can only be cancelled once. Cancelled EECS-GO are removed from accounts by changing their status to “cancelled” so that they do not appear in any Account in the Registry after the Cancellation. The Account Holder performing the cancellation has full access to see the details of the cancellation, which are exportable in Registry or they can generate an official Cancellation Statement from the system (Annex 5). Following

cancellation, EMS JSC Belgrade will verify and approve or disapprove the cancellation within 5 working days. If EMS JSC Belgrade cannot approve the cancellation, EMS JSC Belgrade must give rationale for disapproval. After approving the Account Holder can export the cancellation statement or get the link of the official cancellation statement.

Prior to approving the cancellation EMS JSC Belgrade checks that the cancellation has been completed according to the electricity disclosure regulations of Serbia, EECS Rules and possible ex-domain cancellation rules; the most important criteria being:

- Cancellation for disclosure in Serbia for consumption in calendar year X must be done before 31st March in year X+1
- Country of consumption must be either:
  - o Serbia
  - o Country whose issuing body has an ex-domain cancellation agreement with EMS JSC Belgrade in place at the time of cancellation.

If criteria is not met, EMS JSC Belgrade shall reject the cancellation.

E.9.3. Having performed a cancellation, the Account Holder receives a notification of the success or failure of the cancellation in the Registry.

E.9.4. Immediately after successful confirmation of the cancellation, the Account Holder may download a Cancellation statement from the Registry. A sample (template) of cancellation statement is included in Domain Protocol as Annex 5.

E.9.5. Cancellation is removing an EECS-GO from circulation. Once cancelled, an EECS-GO cannot be moved to any other account, and is no longer tradable. Canceling an EECS-GO which is already cancelled or expired cannot be done.

E.9.6. Ex-domain Cancellation is available when Serbia signs a bilateral agreement with a country which is not yet part of AIB.

## **E.10 End of Life of EECS-GO – Expiry**

E.10.1. GO expire automatically 12 months after the end of the related production period. The same rule applies to all EECS-GO regardless what is the Domain of issuing.

E.10.2. GO which have expired are no longer valid for Transfer or Cancellation.

E.10.3. EMS JSC BELGRADE will not allow import or export of expired EECS-GO.

## **E.11 End of Life of EECS-GO – Withdrawal**

E.11.1. Withdrawal is removal of EECS-GO from an account. EMS JSC Belgrade may withdraw an EECS-GO held in account on its Registry at the request of the Account Holder of that account, or otherwise in accordance with the provisions of the EECS scheme.

E.11.2. GO can be withdrawn for the following reasons:

- if the EECS-GO has been issued as a result of fraudulent activity
- if the EECS-GO has been issued in error

E.11.3. GO issued in error will follow the error handling process in Section E.8



## E.12 Fees - issuance of invoices

- E.12.1. EMS JSC Belgrade will charge fees to Account Holders according to the Price Act on fees for issuance, transfer and end of life cycle of Guarantees of Origin approved by National Regulatory Authority. Tariffs for participating in EECS-GO Scheme in Serbia can be found on EMS JSC Belgrade web-site.
- E.12.2. Frequency of Invoice issuing
- Invoices are issued on dates defined by Invoice calendar according to the Pricing Act and this Domain Protocol. The invoice calendar will be published on EMS's website.
- E.12.3. issuance and VAT handling
- Invoices are completed in accordance with the laws which regulate value added tax (Official Gazette of Republic Serbia", 84/2004, 86/2004, 61/2005, 61/2007, 93/12, 108/13, 68/14, 142/14, 83/15, 108/16). Invoices will be expressed in euro (EUR). Account Holders shall pay the total amount stated in the invoice under the item "Total for Payment" to the account of EMS JSC Belgrade according to payment instructions set forth in the invoice. Account Holder established in Serbia shall pay the total amount in RSD (RS Dinar) equivalent of EUR at the middle exchange rate determined by the decision of the National Bank of Serbia (NBS) on the date of payment (currency clause). Participants established abroad shall pay the total amount stated in euros.
- E.12.4. The invoice shall be sent by e-mail and registered mail.
- E.12.5. The deadline for payment of invoice issued by EMS JSC Belgrade is 8 (eight) days from the issuance date. The invoice amount shall be paid in full to the account of EMS JSC Belgrade within the stipulated time. It will be considered that the payment as per the invoice is effected when the relevant sum is deposited in the account of EMS JSC Belgrade. In case of a delay in payment the default interest will be calculated and charged according to the law.
- E.12.6. If the deadline for payment expires on a non-working day or a holiday, the deadline shall be the following working day.
- E.12.7. If the Account Holder fails to pay the amount stated in the invoice by the stipulated deadline it will be blocked from performing actions in the Registry until it settles the payment obligations against the issued invoice.



## **F Issuer's Agents**

### **F.1 Production Auditor and qualification criteria for registration at the Ministry**

All electricity producing devices are subject to qualification registration in the Domain of Serbia according to Ministry's procedures for registration of Producers from renewable sources. The registration is carried out by the Ministry according to the Law. The complete register is operated and kept by the Ministry. Basic information for all Production Devices is made public on <http://www.mre.gov.rs/doc/registar.html> (the website of the Ministry). All electricity production is subject to measuring which is carried out by the EMS JSC Belgrade, EPS Distribucija Ltd. Belgrade and Operators of closed distribution systems.

All audit activities are operated under the regulations and procedures of the Ministry.



## G Activity Reporting

### G.1 Public Reports

EMS JSC Belgrade will publish GO Market Information relating to the trading scheme on its website [www.ems.rs](http://www.ems.rs) or the public page of the Registry every month at at least including:

- A list of participants registered for the Scheme in the Domain of Serbia
- A list of Production Devices
- Information on GO that have been Issued
- Information on GO that have been Transferred
- Information on GO that have been Exported
- Information on GO that have been Imported
- Information on GO that have been Cancelled
- Information on GO that have been Cancelled for use in other Domains
- Information on GO that have Expired
- Information on GO shall include the number of GO and separate information concerning EECS-GO and National GO, until the production of the latter has expired.

Detailed information about Production Devices such as:

- Name of the Production Device
- Installed power
- Commissioning date
- Type of fuel

shall be published on public page of Registry.

### G.2 Record Retention

G.2.1. EMS JSC Belgrade retains operational and standing data as follows:

Data	Time	Medium
Standard terms and conditions and its appendices	Indefinitely	Paper
Production Device Registration forms	10 years	Paper
Meter reading data	10 years	Electronic Archive and Database backups
Transaction data	10 years	Database backups

Audit reports are kept according to Ministry's procedure.



### G.3 Orderly Market Reporting

- G.3.1. EMS JSC Belgrade shall report failures of EECS-GO Market Participants to comply with the provisions of the Product Rules to the NRA. Such failures shall include behavior by EECS-GO Market Participants of which the EMS JSC Belgrade is aware and which, in its reasonable opinion, amounts to a breach of Competition Law, or applicable law governing the conduct of financial markets.
- G.3.2. EMS JSC Belgrade shall notify the AIB of any report made by it under section G.3.1 and shall provide the AIB with as much information in relation to such report as is consistent with any duty of confidentiality it may have to the relevant EECS Market Participant(s).
- G.3.3. Where EMS JSC Belgrade determines that the EECS Market Participant is in breach of the Product Rules or determines that a Production Device does not meet Production Device Qualification Criteria for an EECS-GO, EMS JSC Belgrade shall:
- take such action as is necessary to ensure compliance (including the withdrawal of registration of the relevant Production Device for the purposes of EECS-GO; and
  - notify the AIB of such breach where EMS JSC Belgrade has reasonable opinion that such breach could affect the transfer of EECS-GO outside of its Registry.



## **H Association of Issuing Bodies**

### **H.1 Membership**

- H.1.1. EMS JSC Belgrade is aiming to become a member of the Association of Issuing Bodies (AIB) and is bound by the quality standards of that Association for the international transfer of EECS-GO. Continued membership is essential to facilitate international transfers of EECS-GO.
- H.1.2. Should EMS JSC Belgrade withdraw from AIB membership, it will give notice to the EECS-GO Market Participants in accordance with the Standard Terms and Conditions.
- H.1.3. If EMS JSC Belgrade ceases to be Authorised Issuing Body for EECS-GO in Serbia, as a consequence, all records in the Registry will be locked at that effective date, no further issuing will take place, all Production Devices will cease to be registered for the purposes of issuing EECS-GO.
- H.1.4. EMS JSC Belgrade will re-register all Production Devices if a new registry replaces the existing registry.
- H.1.5. EMS JSC Belgrade will advise the AIB as soon as is practicable if it is no longer designated as the Issuing Body for the Domain of Serbia.

### **H.2 Complaints to the AIB**

- H.2.1. GO Market Participants may complain in writing directly to the General Secretary of AIB (and provide evidence substantiating such allegation) if they consider that:
- GO issued by EMS JSC Belgrade is in breach of EECS Rules
  - Domain Protocol is inconsistent with provisions provided by EECS Rules.



## I Change Control

### I.1 Disputes

- I.1.1. Where there is a dispute between an Account Holder and EMS JSC in connection with this Domain Protocol, the Account Holder and EMS JSC shall first seek amicable settlement through mutual consultation. The Account Holder and EMS JSC shall meet within twenty (20) Working Days after the matter has been referred to them and seek to resolve the dispute.
- I.1.2. If the Account Holder and EMS JSC are unable to resolve the dispute within twenty (20) Working Days of the meeting or such longer time as may be agreed then the dispute shall be determined by competent Commercial Court in Belgrade.
- I.1.3. The substantive law of Serbia shall be applicable.

### I.2 Change Requests

- I.2.1. EMS JSC Belgrade can amend the Domain Protocol from time to time.
- I.2.2. An Account Holder may propose a modification to this Domain Protocol or Standard Terms and Conditions. Such a proposal will include a detailed description, including an exact specification of any proposed modification of this Domain Protocol or Standard Terms and Conditions and be passed in writing to EMS JSC Belgrade.
- I.2.3. On receipt of such a request, EMS JSC Belgrade will:
  - Respond to the request within 30 working days, describing the procedures to be followed, and estimating when a reply can be expected;
  - Decide whether the request and its consequences are in its opinion reasonable;
  - If the proposal leads to a modification of the Domain Protocol, EMS will inform the EECS Market Participants within Serbia of the outcome of this decision.
- I.2.4. Any modifications to this Domain Protocol are subject to approval by the AIB that such changes do not conflict with the EECS Rules of the Association of Issuing Bodies (AIB) for The European Energy Certification System.
- I.2.5. Implementation of modifications will be notified by email to the EECS Market Participants and will take effect on publication of the documentation on the website [www.ems.rs](http://www.ems.rs) and [www.aib-net.org](http://www.aib-net.org) if not specified otherwise.

### I.3 Final provisions

- I.3.1. Upon the approval of the EMS JSC Assembly, these Rules shall enter into force on the day of their publication on the website of EMS JSC Belgrade.
- I.3.2. On the day of entry into force of these Rules, Rules on issuing guarantees of origin number: 000-00-ROU-7 / 2017-001 Beograd, dated 12.12.2017 shall cease to apply.

**EMS JSC BELGRADE  
ASSEMBLY  
Class: 1 4 0  
Number: 000-00-ROU-7/2017-001  
Belgrade, 10<sup>th</sup> of August 2019**

**PRESIDENT OF THE ASSEMBLY  
Mr. Milun Trivunac, ma. in Economics**



## **J Abbreviations**

AERS - Energy Agency of the Republic of Serbia

AIB – Association of Issuing Bodies

EECS – European Energy Certificate System

GO – Guarantee of Origin

EMS JSC BELGRADE – company with registered office at Beograd, Kneza Miloša 11, Serbia and incorporated in the Serbian Business Register with the Company Identification No.20054182;

Ministry – Ministry of Mining and Energy of the Republic of Serbia

NRA – National Regulatory Authority

ENTSO-E – European Network of Transmission System Operators for Electricity



## K Annex 1: Contacts List

### Issuing Body and Registry Operator and Support, Production Registrar, Measurement Bodies

#### Authorised Issuing Body

Company EMS JSC Belgrade  
Contact Person: Office for EECS-GO  
Address: Vojvode Stepe 412, 11000 Beograd  
Country: Serbia  
Phone number: +381 11 3957 176, +381 11 3957 177  
Email address: [grexel-info@ems.rs](mailto:grexel-info@ems.rs)

#### National Regulatory Authority (NRA)

Company AERS  
Address: Terazije 5, 11000 Beograd  
Country: Serbia  
Phone number: +381 11 63 50 130  
Email address: [info@aers.rs](mailto:info@aers.rs)

#### Production Auditors

Contact Person [www.mre.gov.rs/](http://www.mre.gov.rs/)

### Measurement Bodies

#### Transmission System Operator (TSO)

Company EMS JSC Belgrade  
Address: Vojvode Stepe 412, 11000 Beograd  
Country: Serbia  
Phone number: +381 11 3957 176, +381 11 3957 177  
Email address: [grexel-info@ems.rs](mailto:grexel-info@ems.rs)

#### Distribution System Operator (DSO)

Company EPS Distribucija Ltd. Belgrade  
Address: Bulevar umetnosti 12, 11070 Novi Beograd  
Country: Serbia  
Contact Person: <https://www.epsdistribucija.rs/index.php/kontakti>  
Email address: [info.centar@epsdistribucija.rs](mailto:info.centar@epsdistribucija.rs)

#### Operator of Closed Distribution System

Currently no Operator of Closed Distribution System is appointed.



**L Annex 2a: Account Application/Amendment Form**

<b>Application for opening an account in the EECS-GO register</b>	
<b>I. Account holder basic information</b>	
<b>Account Holder Name:</b>	
<b>Role on the Market</b>	<b>Eligible Producer / Supplier / Wholesale Supplier</b>
<b>Licence number</b>	
<b>VAT No.</b>	
<b>Business Address</b>	
<b>E-mail</b>	
<b>Mobile Phone Number/Phone Number</b>	
<b>Fax</b>	
<b>EIC</b>	
<b>II. Root user information</b>	
<b>Name and Surname</b>	
<b>E-mail</b>	
<b>Mobile Phone Number</b>	
<b>Phone Number</b>	
<b>III. Technical contact information</b>	
<b>Name and Surname</b>	
<b>E-mail</b>	
<b>Mobile Phone Number</b>	
<b>Phone Number</b>	
<b>IV. Invoice contact information</b>	
<b>Name and Surname</b>	
<b>E-mail</b>	
<b>Mobile Phone Number</b>	
<b>Phone Number</b>	



**Annex 2b: Form for Closing Account in the EECS-GO Register**

<b>Application for closing an account in the EECS-GO register</b>	
<b>I. Account holder basic information</b>	
<b>Account Holder Name:</b>	
<b>Role in the Market</b>	<b>Eligible Producer / Supplier / Wholesale Supplier</b>
<b>Licence number / Decision number</b>	
<b>VAT No.</b>	
<b>Business Address</b>	
<b>E-mail</b>	
<b>Mobile Phone Number/Phone Number</b>	
<b>Fax</b>	
<b>EIC</b>	
<b>Member Code</b>	

By signing this application I confirm authenticity of data and the following:

- I am authorised to submit the application to close the account / eligible producer account

Date: \_\_\_\_\_

Name and surname: \_\_\_\_\_

Signature and stamp: \_\_\_\_\_





## **Annex 2c: Standard Terms and Conditions**



### M Annex 3: Device Registration Form

<b>New Registration / Declaration of Changes*</b>		Date			
<b>Registrant Details</b>					
Is the Registrant also the owner of the Device?					Yes/No*
<b>Registrant Name:</b>			<b>Contact person:</b>		
<b>Street:</b>			<b>e-mail:</b>		
<b>City:</b>			<b>Telephone:</b>		
<b>Postal code:</b>			<b>Fax</b>		
<b>Country:</b>					
<b>Production Device Details</b>					
<b>Device Name:</b>			<b>Latitude</b>		
<b>Street:</b>			<b>Longitude</b>		
<b>City:</b>			<b>TSO's metering ID</b>		
<b>Postal code:</b>			<b>Installed capacity (kW)</b>		
<b>Country:</b>	Serbia		<b>Date of commissioning</b>		
<b>Measurement Body:</b>			<b>Grid connected</b>	Yes/No*	
<b>Production Auxiliaries present (if yes give details) :</b>			Yes/No*		
If the Production Device is not connected directly to the grid, specify the circumstances, and additional relevant meter registration numbers:					
<b>Energy Sources (see tables below)</b>			<b>Technology</b>		
<b>Energy Input</b>			<b>Technology</b>		
Level 1	Level 2	Level3	Level 1	Level 2	Level3
<b>Support Schemes</b>					
Yes/No*	[insert support scheme name here]		Yes/No*	[insert support scheme name here]	
Yes/No*	[insert support scheme name here]		Yes/No*	[insert support scheme name here]	
Yes/No*	[insert support scheme name here]		Yes/No*	[insert support scheme name here]	
<b>Independent Certification Schemes for which the device is eligible</b>					

By signing this application I confirm authenticity of data and the following:

- I am authorised for applying for PD registration
- I permit EMS JSC Belgrade to register PD in EECS-GO Registry on my behalf
- I will bear the expense of PD registration

Date: \_\_\_\_\_

Name and surname: \_\_\_\_\_

Signature and stamp: \_\_\_\_\_

Enclosures: Decision on status of eligible producer

\_\_\_\_\_

\_\_\_\_\_



Registrant Authorised Signature

EMS JSC Belgrade

The following is a summary of the EECS Rules Fact Sheet 5 'Types of Energy Inputs and Technologies' entries for technologies.

Energy Inputs			
Level 1	Level 2	Level 3	
Solid	Unspecified	Unspecified	
	Municipal waste	Biogenic	
	Industrial and commercial waste	Biogenic	
	Wood	Unspecified	
		Forestry products	
		Forestry by-products & waste	
	Animal fats	Unspecified	
	Biomass from agriculture	Unspecified	
		Agricultural products	
		Agricultural by-products & waste	
Liquid	Unspecified	Unspecified	
	Municipal biodegradable waste	Unspecified	
	Black liquor	Unspecified	
	Pure plant oil	Unspecified	
		Rapeseed (Brassica napus L.)	
		Sunflower (Helianthus annuus L.)	
		Oil palm (Elaeis guineensis Jacq.)	
		Coconut (Cocos nucifera L.)	
		Yatropha	
	Waste plant oil	Unspecified	
	Refined vegetable oil	Unspecified	
		Biodiesel (mono-alkyl ester)	
		Biogasoline (C <sub>6</sub> -C <sub>12</sub> hydrocarbon)	
Gaseous	Unspecified	Unspecified	
	Landfill gas	Unspecified	
	Sewage gas	Unspecified	
	Agricultural gas	Unspecified	
		Pig manure	
		Cow manure	
		Chicken manure	
		Unspecified manure	
	Energy crops		
	Gas from organic waste digestion	Unspecified	
Process gas	Biogenic		
Heat	Solar	Unspecified	
	Geothermal	Unspecified	
		Conventional geothermal heat	
		Enhanced dry bed geothermal heat	
	Aerothermal	Unspecified	
	Hydrothermal	Unspecified	
	Process heat	Biogenic	
Mechanical source or other	Unspecified	Unspecified	
	Wind	Unspecified	
	Hydro & marine	Unspecified	

Technologies		
Level 1	Level 2	Level 3
Solar	Unspecified	Unspecified
	Photovoltaic	Unspecified
		Classic silicon
	Thin film	
Concentration	Unspecified	
Wind	Unspecified	Unspecified
		Onshore
		Offshore
		Unspecified
Hydropower (Hydro-electric head installations)	Unspecified	Unspecified
	Run-of-river head installation	Unspecified
	Storage head installation	Unspecified
	Pure pumped storage head installation	Unspecified
	Mixed pumped storage head	Unspecified
Marine	Unspecified	Unspecified
		Unspecified
		Onshore
	Tidal	Unspecified
		Onshore
		Offshore
	Wave	Unspecified
		Onshore
		Offshore
		Unspecified
Currents	Unspecified	
Pressure	Unspecified	
Thermal	Unspecified	Unspecified
	Combined cycle gas turbine with heat recovery	Unspecified
		Non CHP
		CHP
	Steam turbine with back-pressure turbine (open cycle)	Unspecified
		Non CHP
		CHP
	Steam turbine with condensation turbine (closed cycle)	Unspecified
		Non CHP
		CHP
	Gas turbine with heat recovery	Unspecified
		Non CHP
		CHP
	Internal combustion engine	Unspecified
		Non CHP
CHP		
Micro-turbine	Unspecified	
	Non CHP	
	CHP	
Stirling engine	Unspecified	
	Non CHP	
	CHP	
Fuel cell	Unspecified	
	Non CHP	
	CHP	
Steam engine	Unspecified	
	Non CHP	
	CHP	
Organic rankine cycle	Unspecified	
	Non CHP	
	CHP	
Nuclear	Unspecified	Unspecified
	Heavy-water reactor	Unspecified
	Light water reactor	Unspecified
	Breeder	Unspecified
	Graphite reactor	Unspecified
Other	Unspecified	Unspecified



## N Annex 4a: Production/Consumption Declaration for Hydro Power Plants

<b><u>Eligible Producer Declaration Form for a Pumped Hydro Power Plant</u></b>	
<b><u>I. Account holder and Production Device basic information</u></b>	
Name of account holder	
Member Code	
Name of Production Device	
Month and year relating to declaration	
<b><u>II. Data on generated electricity for which EECS-GO are being issued</u></b>	
a) Total electricity production (MWh)	
b) Electricity consumed for pumping (MWh)	
c) Electricity consumed on-site (if any) (MWh)	
d) Electricity consumed for auxiliaries (MWh)	

Generated electricity for which EECS-GO are being issued (a-b-c-d): \_\_\_\_\_ MWh

By signing this application I confirm authenticity of data and the following:

- I am authorised to submit this declaration

Date: \_\_\_\_\_

Name and surname: \_\_\_\_\_

Signature and stamp: \_\_\_\_\_

Registrant Authorised Signature \_\_\_\_\_



### Annex 4b: Production/Consumption Declaration for Biomass Power Plants

<b>Eligible Producer Declaration of the Use of Certain types of Primarily Fuel Form</b>							
<b>I. Account holder and Production Device basic information</b>							
Name of Account Holder							
Member Code							
Name of Production Device							
Month and year relating to declaration							
<b>II. Data on the use of primary fuel (multiple biomass type, or other fuel type)</b>							
Period:	Quantity in stock at the beginning of the month  I  (kg)	Purchased quantity (from other legal or natural persons) during the month  II  (kg)	Produced quantity (own waste / plantations) during the month  III  (kg)	Quantity in stock at the end of the month  IV  (kg)	Total consumed quantity during the month  M = (I+II+III)-IV  (kg)	Average calorific value  C  (kJ/kg)	Energy factor of consumed quantity  $\frac{M \times C}{\sum_{i=1}^n M^i \times C^i} \times 100$  (%)
Total biomass							
Total other sources							

Renewable Energy Factor:

$$\frac{\sum_{i=1}^j M^i \times C^i}{\sum_{i=1}^n M^i \times C^i}$$

By signing this application I confirm authenticity of data and the following:

- I am authorised to submit this declaration

Date: \_\_\_\_\_

Name and Surname: \_\_\_\_\_

Signature and stamp: \_\_\_\_\_

Registrant Authorised Signature \_\_\_\_\_



## O Annex 5: EECS Electricity Cancellation Statement

This Cancellation Statement acts as a receipt for the EECS-GOs listed below and for the purpose shown.

With this Cancellation Statement, released on the <yyyy-mm-dd>, the indicated EECS-GOs are no longer tradable. Onward sale of this Cancellation Statement is prohibited. The environmental qualities of the associated energy have been consumed and that this Cancellation Statement and these Certificates may not be transferred to any party other than the energy supplier or end-consumer.

### Cancellation Statement

With this Cancellation Statement the indicated certificates are no longer tradable. Onward sale of this Cancellation Statement is prohibited.

#### Transaction details

Transaction Type:	Cancel
Transaction Date:	2017-12-05 12:50:00
Transaction Number:	2017120500001
Public link to cancellation statement:	<a href="http://demo.mo.grexel.com/CancellationStatements/CancellationStatement_4850_43741357-a90a-408a-a086-3dab1ec3394b.pdf">http://demo.mo.grexel.com/CancellationStatements/CancellationStatement_4850_43741357-a90a-408a-a086-3dab1ec3394b.pdf</a>

Message to Receiver: -

From	To
Account Holder: <a href="#">CAT_Producer</a>	Name of Beneficiary: <b>Tarifni paket</b> 60%
Account: RS- CAT_Producer- 643002406900000879	Cancellation Purpose: Objavlivanje informacije
Domain: Serbia	Consumption Period: 2017-10-01 to 2017-10-31
Street: -	Country of Consumption: Serbia
Postal Code and City: 12223 Golubac	Location of Beneficiary: Serbia
Country: Serbia	Usage Category: Disclosure
	Type of Beneficiary: End-consumer

#### Total

Total MWh:	33
Total GO:	33

Certificate Number (From - To)	Volume	Domain	Fuel, Technology	S/T	Issuing Date	Production Period	Production Device (GSRN, installed capacity, name)	Trading Schemes	Support Schemes
6430024065559 0961000000012 5745 To 6430024065559 0961000000012 5777	33	Serbia	F01010101, T050101	S	2017-11-20	2017-10-01 To 2017-10-31	643002406996000166 43,54 MW CATMultifuel	GO	No support

#### Production Device public information

Production Device Name:	CATMultifuel
Production Device GSRN:	643002406996000166
Domain of Production Device:	Serbia
Installed Capacity, MW:	43,54
Date of Commissioning:	2014-07-07
Location of Production Device:	32000 Cacak
Operator Name:	CAT_Producer
Address of Operator:	Karadjordjeva 46, 32000 Cacak, Serbia
Technology:	T050101 - Thermal/Combined cycle gas turbine with heat recovery/Non CHP
Fuel:	F01010101 - Renewable/Solid/Municipal waste/Biogenic
Investment support:	-
Production support:	-